

Duck calls

Making duck calls is fairly simple, especially for the barrel. It is the tone board which holds the reeds that requires precision, or the call won't sound right. Below are the steps I follow in making them.

The Barrel

1. Start with a blank 1 ½ x 1 ½ by 4" to 5 " long and round it out.
2. Drill a 5/8" hole in the end of the blank. I use a twist bit but you could use a Forstner bit.
3. Now you can turn the call to look any way you want. Just put a groove in it somewhere near the base for the lanyard. I make mine 3"-3 ½' long.
4. Sand the barrel I sand up to 300 grit.
5. Now you can part off the barrel and sand the parted off end now it is ready for finish.

Tone Board

1. Start with a blank 1 ½ x 1 ½ by 5" to 6 " long and round it out.
2. Using a drill ¼" drill bit drill a hole to the depth of 3 ¼ ". This is because the jig depth is 1 5/8" and then I have 1 5/8" sticking out of the barrel.
3. Using a ½" step drill bit I will cone the end of the sound board opening and then use a small gouge to smooth it out.
4. Now using a calipers and parting tool part down to 5/8" dia at from the end of the blank 1 5/8" and 3 3/4" which will be the end of the tone board
5. Reset your calipers to 1" and part down to that depth at the end of the blank. Now using your gouge connect these depths it is critical that at the 1 5/8" length point that you hit 5/8" exactly.
6. Now you can sand your tone board, but be careful of the 1 5/8" point you don't over sand and lose your 5/8" dia.
7. Part off the Tone board at 4"

Cutting the tone board

1. Push the tone board into the jig and measure how much is sticking out. It should be 1 5/8" if too much is sticking out sand until you achieve that.
2. Using great care cut the tone board on the band saw be careful you finger will be very close to the blade.
3. Sand the tone board to get rid of the saw marks and you are ready to finish.

Installing reeds

1. cut top reed to ½' X 1 3/8 " and cut bottom reed to ½' x 1 ½' clip the corners on one end of both reeds put a small dimple in the top reed about ¼' from the end
2. Using a piece of cork to hold reeds in place insert into slot in tone board with the dimple in the top reed in the middle of the 2 reeds. This will make a little gap between the two reeds.

Tools need

5/8" drill bit

1/4" drill bit

Sand paper 100-300 grit

Chuck for lathe or pen mandrel and STAT Premium Duck Call Tooling Kit

Turning tools

Calipers

Ruler

Tone board cutting jig or store bought insert

Lathe (well this is a given)

Resources for supplies

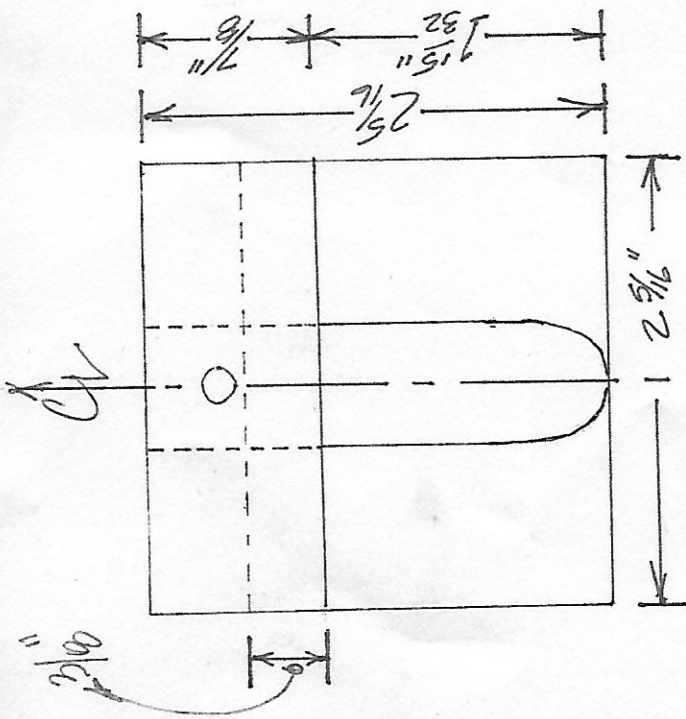
<http://www.beartoothwoods.com>

<http://www.hutproducts.com>

<http://www.woodturningz.com>

<http://www.woodcraft.com>

DUCK CALL JIG
NOT TO EXACT SCALE
"BLIT CLOSE"

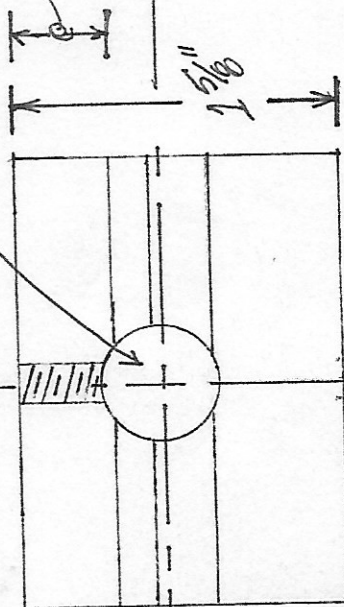


Thumb Screws

TOP VIEW

$\frac{5}{16}$ " HOLE

$1\frac{15}{32}$ "



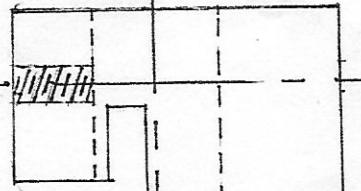
FRONT VIEW

RADIUS VARIES
DEPENDING ON PATTERN



$\frac{3}{16}$ "

$1\frac{1}{2}$ "



SIDE VIEW