

# WOODTURNERS

of  
St. Louis

A chapter of the American Association of Woodturners

November 1995  
Number 32

The Woodturners of  
St. Louis Newsletter  
is published monthly  
and mailed to the  
Chapter Members and  
to other selected  
woodturners.

**President:**

Gary L. Johnson  
12220 Latham  
Bridgeton, MO 63044  
314-739-4791

**Vice President:**

David C. Wahl  
10041 Conway Rd.  
St. Louis, MO 63124  
314-993-4843

**Secretary/Treasurer**

Virginia H. Toone  
736 Linwood Blvd.  
Kirkwood, MO 63122  
314-984-0502

Meetings are held  
on the fourth Sunday  
of each month at  
Woodcraft Supply  
12511 Olive St. Rd.  
(Dierberg Heritage  
Center)

1PM to 4PM

Bring a guest or  
a friend!

**October Meeting** Our regular October meeting was held on October 22, 1995 at the Woodcraft Store. Twenty-eight people attended. Binh Pho and Burt Ketterer each won a block of Color-wood donated by Woodcraft as door prizes.

**Joy of Turning 1996** Our second annual symposium will be held on September 14 and 15, 1996. We are currently planning to have five demonstrators, and we have lined up Bonnie Klein, David Elsworth, Alan Stirt and our own Fletcher Hartline. We hope to have several sessions aimed at the beginning turner with at least some limited hands-on experiences.

**Nominations for 1996** After much wheedling and cajoling, Dave Wahl accepted the nomination for President, Gary Johnson accepted the nomination for Vice-President; and, since Virginia wasn't at the meeting, we all agreed she should continue as Secretary/Treasurer. Chuck Dombek volunteered for the job of Newsletter Editor. Nominations for the officers will remain open until we vote at the November meeting.

**Miscellaneous** Gary mentioned that he had ordered a quantity of Super Glue from Tower Hobbies and has 2 oz. bottles available for club members for \$5.00 each, and 8 oz. bottles of accelerator for \$7.00 each. Two Oppie brushes were passed around for our members to evaluate, and they were used to help clean up at the end of the day. The larger shop brush is priced at \$39.95 and the lathe turner's brush at \$29.95. The company is offering a 5% discount if we were to order over 10 brushes. At the November meeting one of the brushes will be offered as a door prize.

**Bring-Back Raffle** We sold raffle tickets at \$1.00 each and raffled off the hollow vessel that Clay Foster had made during our 1995 symposium. Mark Johnston was the lucky winner of this piece, and he will be required to bring something back to raffle off at the November



meeting. The club made \$30.00 on this fun event.

### Announcements

\*Congratulations to Fletcher Hartline for winning a merit award from the Ozark Artist's Guild Competition and Show. The show was sponsored by the Associated Artists of Carbondale. Fletcher won with one of his new inside/outside turned pieces.

\*The 1996 American Association of Woodturners Symposium will be held in Greensboro, North Carolina on June 22-24, 1996. This event will mark the tenth anniversary of the AAW.

\* Gary has a price list from Robert Peters in Hilo, Hawaii on Hawaiian woods that he has available.

Show 'N Tell Elaine Navarro brought a group of turned cocabolo toothpicks along with a small cocabolo bowl to hold them. Bob Schmidt showed several Christmas ornaments and also some spinning tops that he has made using a ball point pen as the point and shaft. Hans Neumann brought a bowl made from walnut burl and also he had a number of older woodturning tools that he offered up to any of the members that wanted them for free. Binh Pho brought several pieces including two bowls that he had done a fair amount of carving and shaping on and also a redwood Christmas ornament that had been sand blasted. He also brought a spherical lidded vessel that sat atop a multi-axis turned base, very elaborate. He also had a landscape piece which consisted of a maple burl base sprouting a group of painted locust thorns with a spherical vessel sitting on top. Gary Johnson showed a Christmas ornament made by Frank Sudol--one of his thin birch turned balls with a leaf design pierced with a dental drill. Gary also had one of his own hollow ball maple Christmas ornaments and a segmented bowl with a bead at the lip. The tool that was used to make this bead was made from a screw driver and was passed around for all to see. Dave Wahl demonstrated how smoothly a balanced motor and pulley runs. He also talked about his project of constructing a fiber optic light source for gauging the wall thickness of a hollow vessel. More on this in a future newsletter.

Demonstrations Gary demonstrated making a multi-axis snow flake. This is made from a 1/8 inch thick piece of cherry. Six grooves are cut in one of the faces with a homemade thin parting tool. The piece then was remounted and concentric grooves cut in the other face. The demonstration went well until the final cut was being made when the whole thing flew apart. To prove that that doesn't happen all the time, several successfully completed snow flakes were passed around to view. This particular project is somewhat time consuming and definitely not a money maker for craft shows. Dave Skinner then demonstrated making two of his favorite Christmas ornaments. The first one was sort of an elongated flying saucer or much like making two spinning tops back to back; and the second one was made from a 1 1/2 x 1 1/2 x



4" long block with 5/8" diameter holes drilled through the block at 90 degrees to each other. These are both good spindle turning exercises, and I hope everyone tries to make a few for this year. In case you missed that meeting, we are including sketches of both Gary's and Dave's ornaments in this Newsletter.

Second National Exhibition of the AAW Chapters 1996 The Fitchburg Art Museum and Central New England Woodturners are sponsoring their second exhibition of work from AAW Chapters to run January 28 through March 24 at the Fitchburg Art Museum in Fitchburg, Massachusetts. Each AAW Chapter can send one piece for every 10 members of the Chapter. Since our membership stands at about 50, we should be able to send 5 pieces for the show. If you would like to participate in the show, we ask that you bring one or two of your best pieces to the November meeting. The membership will select up to 5 pieces to be sent for the show. We'll have entry forms and more information available at the meeting.

November meeting Our regular November meeting will be held on Sunday, November 26, 1996. Our featured demonstration will be greenwood turning by Fletcher Hartline. Please bring something for our Show 'N Tell session. It is always one of the high points of the meeting.

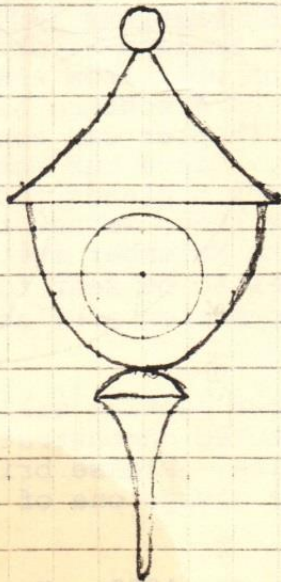
Hope to see you all on November 26, 1995. Have a Happy Thanksgiving.



XMAS  
ORNAMENTS

START WITH SQUARE BLOCK  
 $1\frac{1}{2}'' \times 1\frac{1}{2}'' \times 4''$

ACTUAL  
SIZE →



← BALL  $\frac{1}{4}''$   
← NECK  $\frac{1}{8}''$

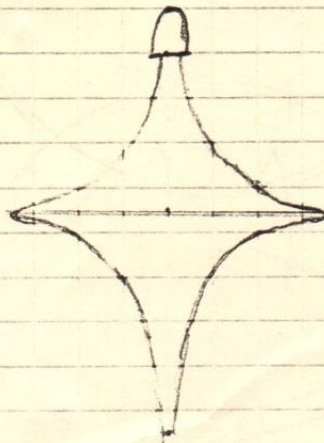
←  $1\frac{1}{2}''$

← HOLE  $\frac{5}{8}''$

←  $\frac{3}{8}''$   
←  $\frac{1}{2}''$

START WITH BLOCK  
 $2'' \times 2'' \times 3''$

ACTUAL  
SIZE

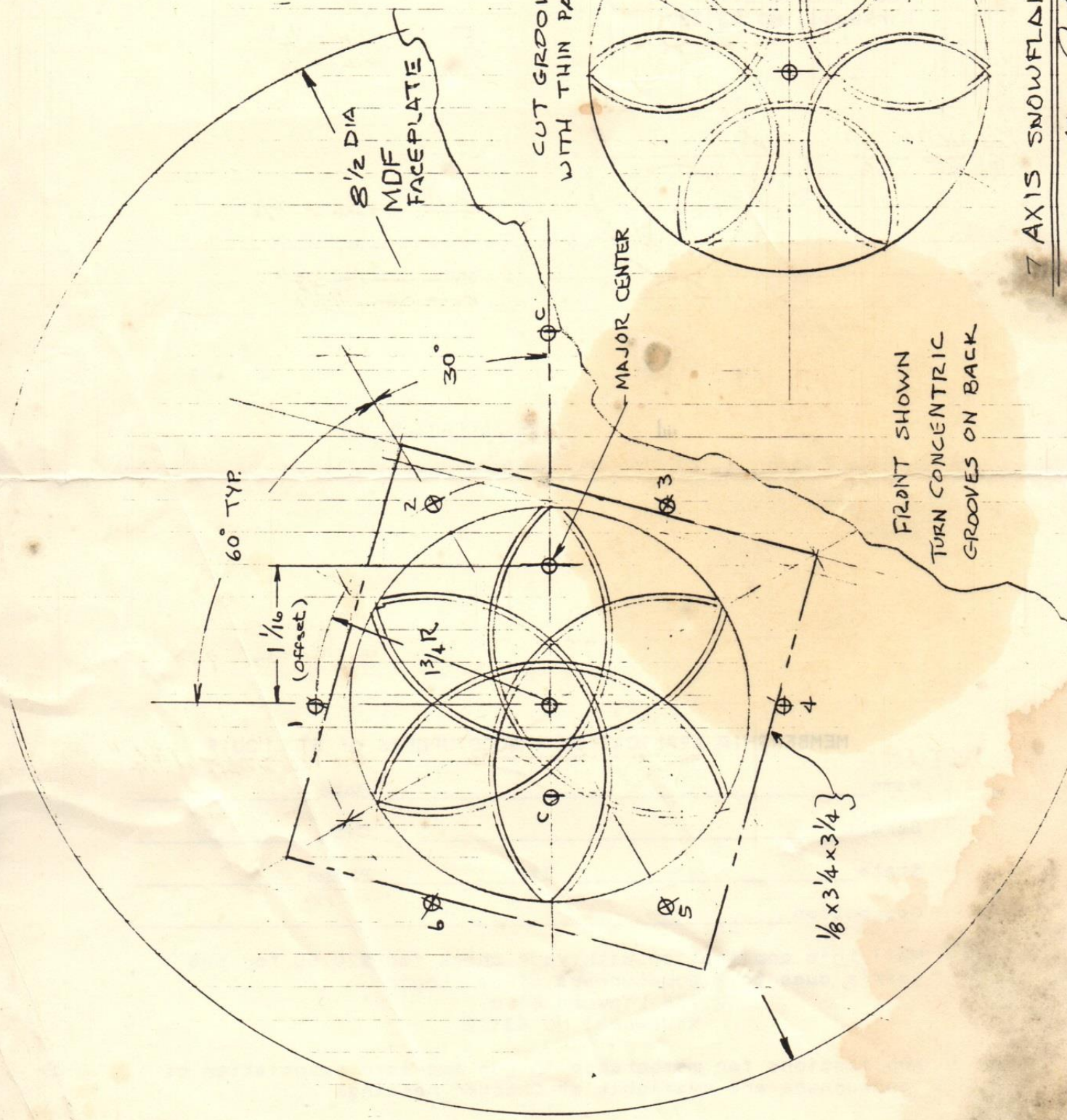


← HEAD  $\frac{1}{4}''$   
← NECK  $\frac{1}{8}''$

← MIDDLE  $1\frac{3}{4}''$

$2\frac{3}{8}''$  HIGH



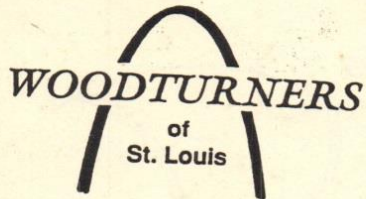


7 AXIS SNOWFLAKES

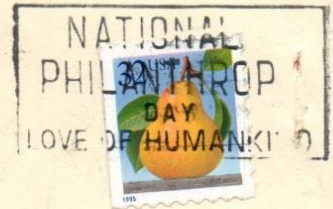
*Kary Johnson*

10-20





736 Linwood Blvd.  
Kirkwood, MO 63122



Charles Yonk  
RR1 Box74  
Palmer, IL 62556

MEMBERSHIP APPLICATION \* WOODTURNERS of ST. LOUIS

Name \_\_\_\_\_ Date \_\_\_\_\_  
Street \_\_\_\_\_ City \_\_\_\_\_  
State \_\_\_\_\_ Zip \_\_\_\_\_ Phone \_\_\_\_\_  
Occupation \_\_\_\_\_

Mail this application with your check for \$20.00 for one  
year's dues to: Woodturners of St. Louis  
736 Linwood Blvd.  
Kirkwood, MO 63122

Applications for membership in the American Association of  
Woodturners are available at Chapter meetings.