



WOODTURNERS OF ST. LOUIS

A Chapter of the American Association of Woodturners

January 2008

A MESSAGE FROM OUR NEW PRESIDENT

I want to thank everyone for the "New Year." Remember those who have lead us through the previous years. Some are not with us, some are, please be sure to thank the ones that are.

What is a new President without change? I am going to have a chance to make a few adjustments to the meetings. I do not want to "rock the boat," I do like "smooth sailing."

As many of you know my wife Nancy, bride of 30 years, and I own Endres Horticultural service. Our son Stephen has joined our business after his baseball years were finished. We are happy to have him with us. The best way to reach me is on my cell phone at 314-568-1244. Our new email address is endrestoh@att.net.

Our newly elected officers have lots of energy and ideas. We are planning the 2008 demonstrations now. If you have any ideas or recomendations please let me know. Our club is full of talent. This is a challenge for me to keep things interesting. Demonstrations need to challenge the advanced and interest the novice. They also need to teach the beginner. I can remember having catches on every project, still do. Upgrade to our club is important. This will take us to the next level. Our collaborative team is first class. New members bring new ideas. The veterans keep ideas in line. The standard set by this group is a great example. In December 2009 I want all phases of our club on a winning level.

I am looking forward to an exciting 2 years.

Dave Endres

WHAT'S INSIDE?

| | |
|---------------------------------|--------|
| Message from our President..... | Cover |
| New Officers..... | page 2 |
| Turn a Winged Bowl..... | page 3 |
| SWAT Symposium..... | page 6 |
| Collaborative..... | page 7 |
| Calendar..... | page 8 |

NEXT MEETING

January 20, 2008 ~ 1-4pm

Woodcraft

2077 Congressional Drive

Maryland Heights, MO 63146

Phone: 314-993-0413

NEW MEETING FORMAT

A new change for 2008 will be an instant gallery table for displaying members pieces instead of having "Show and Tell" during the meeting. We will continue to have demonstrations and presentations at our meetings as well as buisness. January's meeting will include a demonstration from a Baldor representative on grinders and drives.

ANNUAL MEMBERSHIP DUES

Just a reminder to all club members... It is that time of year again and your membership dues are due. For 2008, the membership dues will continue to be \$30 per individual and \$40 for a family.

2 Woodturners of St. Louis

GREEN END SEAL

All members of the St. Louis Woodturners Club have the good fortune to purchase end seal at a greatly reduced cost. Dave Endres has been gracious enough to store the clubs drum of end seal and sell to our members for \$15 for 2 gallons. To take advantage of this great opportunity please contact Dave. If you contact him before the Friday before a meeting he will bring the end seal to the meeting and collect your money. Otherwise you may make arrangements to pick it up from his place of business.

UTAH SYMPOSIUM

The 2008 Utah Symposium date has changed so that it will not conflict with the AAW Symposium. The new dates are May 22nd to 24th. This event will be held at Utah Valley State College in Orem, Utah. Additional information can be found on their website at www.utahwoodturning.com.

JOIN AAW!

Membership in the American Association of Woodturners (AAW), has many benefits that should be considered.

- It supports the growth of our craft through education of both woodturners and the general public.
- The Journal, published 4 times a year, is the best woodturning magazine available today.
- Members may apply for educational grants to assist them in expanding their knowledge of woodturning, several of our members have received them.
- The annual symposium is offered at a discounted rate to members which can be a very educational, as well as inspiring, weekend each year.

If this isn't enough to convince you that the AAW has a lot to offer visit their website at www.woodturner.org for more information.

WOODTURNERS OF ST. LOUIS

President

Dave Endres
314-568-1244
endrestoh@att.net

Vice President

Gary Hinegardner
573-564-2582
gary.hinegardner@gmail.com

Secretary

Dave Baer
314-846-5447
davidbaer@charter.net

Treasurer

Walt Ahlgrim
314-567-5268
removethis@sbcglobal.net

Webmaster

Bill Rubenstein
636-949-2044
wsr2@swbell.net
Web Site: <http://www.stlturners.org>

Yahoo e-group STLWoodturners

Newsletter Editor

Micki Keim
314-791-9948
mickikeim@hotmail.com

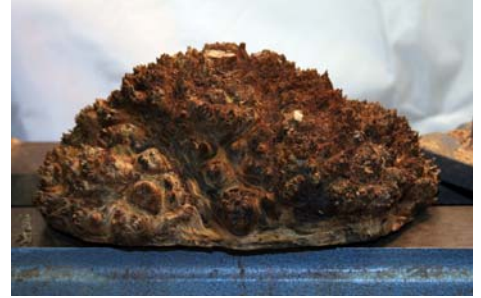
TURNING A WINGED BOWL

Winged bowls are a fun use of unusually shaped burls that otherwise lend themselves to very small projects. They are relatively easy to turn and look absolutely beautiful when complete. I came across a few small Chechen burl caps that were perfect for this type of project. A 1.5" to 2" thick burl cap 5"-6" in diameter works great. A more irregular edge on the burl is better for an even more dramatic look.

The base, or foot, of your bowl will end up on the natural edge side of the burl. The opening of the bowl will be on the flat cut side of the burl cap. It is important to use a burl cap cut off the tree in one slice. When lying down on the cut side, the perimeter of the burl is all natural edge. This will provide you with a finished piece that has a natural edge wing all the way around. If you only have a burl that has a second cut on it you could use the flat spot to insert it in a holder that would display the bowl vertically.

To start, determine where you want the center of your bowl to be, on the flat cut side of the burl. Then drill a hole for a screw chuck, you can also use a faceplate. I use a piece of hardboard 5" diameter with a hole in the center to help visualize where the bowl opening will end up. Mount it to the lathe ensuring it is secure. Turn a small flat on the bottom of what will be the foot and bring up the tailstock for support. The tailstock will provide needed support since most burls are cut unevenly and do not sit perfectly flat against the screw chuck.

Now you're ready to flatten the cut side of the burl and determine the top of your wing. Make several push cuts to define the top of your wing and remove any unevenness from the burl's cut side. Cut into the center far enough so that you have at least 1/4" of wing all the way around what will be the bowl. When the length of the wing is what you want, clean up the surface by shear scraping with the long edge of the gouge. Take very light cuts and stop every



Woodturners of St. Louis

4

few passes to check that the wing is square to the lathe, a small ruler works well for this. Slow movements are important since the wing is irregular and you will be cutting through air at some point of the wing. Once the top of the wing is square and smooth you can begin on the other side of the wing. Do not try to sand the wing while the lathe is moving. Since the edge is irregular you may have a catch which will break the wing or possibly hurt you. I always hand sand the wings of these bowls.

For the back side of the wing you should first roughly define it with push cuts, slowly moving closer to the finished thickness. Once you get it to 3/8" start taking light cuts, inserting the gouge very deliberately so you do not damage the natural edge. The finished wing should be between 1/8" and 3/16". Take light shear scraping cuts as you move closer to finish, stopping often to measure and check the quality of the surface. Slow movements are important here, since you can't power sand you want as good of a finish as possible. Once you are happy with the wing you are ready to turn the bowl.

Complete the outside of the bowl just as you would any other bowl, cutting from the small diameter to large. Burls have grain flowing in many directions so you may need to cut from large to small diameter for a better cut if tear out occurs. Spend as much time as necessary shaping the bottom of your bowl. Really pay close attention to your form, the outside shape of the bowl can make or break the finished piece. Try to avoid flat spots and sharp transitions.

Define the tenon for your chuck ensuring that the surfaces are parallel and square to the lathe for a good grip. Once the outside of your bowl is defined sand it being careful not to touch the wing.



Woodturners of St. Louis



Install your bowl into the chuck and clean up the facing surface. If you need to extend the size of the wing to match the size on the other side, do this first. Do not try to re-cut the edges of your wing from earlier. The wood has probably moved too much and it is too thin to change. Once the face is smooth determine the inside edge of the bowl. If you want to place a detail to define the edge of the bowl itself, do it now. This could be a cove, a bead, a v-cut, or even just a raised lip.

Now hollow out the bowl in stages, moving in $\frac{1}{2}$ " at a time. Remove the wood progressively into the bowl stopping to measure the wall thickness often. Try for $\frac{1}{8}$ " to $\frac{3}{16}$ ". Once the bowl has been hollowed remove it from the chuck and reverse mount it to form the foot.

I use failed lidded box bottoms and bowls for friction chucks on this type of project. Often burls have holes in them that prevent a good seal and the use of a vacuum chuck. The easiest way is to mount the bowl between centers using fiction and pressure to hold it. The center is easy to find if you use the same point made by the tail stock when we first started.

Define the foot first then blend the wood around the foot with the rest of the bowl. If you measured your thickness the whole way while hollowing the inside of the bowl you should have no fear of going through. Sand the foot and remove it from the lathe. Hand sand the wing as smooth as possible stopping at 320 grit, for most domestic woods.

If your burl was wet when you started, place it in a brown paper bag for three days so that it can slowly dry. If you made it with a wall and wing thickness of $\frac{3}{16}$ " or less it should dry with no problems. Once dry, either apply your finish or, if you want to try something new, embellish the wing by carving, sanding, painting, bleaching or dying it.



SWAT SYMPOSIUM (South West Area Turners) October 5-7, 2007

by Patti Dickherber

Shirley, Joe Emons, Bob and I attended the SWAT Symposium the first week of October. The Symposium was held at the MPEC Exhibit Hall in Downtown Wichita Falls, Texas. We stayed at the Howard Johnson Hotel about 3 blocks from the Exhibition Hall. The symposium rate was \$72.50 and the hotel was recently remodeled. They also had a restaurant and bar.

We left a few days early and took the trip in two days. The mileage from St. Charles was 650 miles so it would be possible to drive in one day. It was a straight shot down Highway 44.

The meeting facility had ample space and comfort for all of the symposium activities. The registration fee included lunch and they were exceptional. The lunch area was in the middle of the largest room and the vendor booths ringed that room. The Banquet food was excellent. Individual registration in advance was \$125 (remember, this included 3 days of lunches!). Spouse, in advance registration (included meals) was \$60. All in all, a very affordable symposium.

The classrooms were large and the sound systems were very good in all the rooms Bob and I entered. The Instant Gallery room was spacious and well set up. Many interesting and beautiful items were displayed.

Some of the instructors were: Stuart Mortimer, David Marks, Cindy

Drozda, Alan Stirt, Paul Fennell, and a number of local turners. Spiral bound notebooks were given out with the registration packets and they contained the notes of all the presenters for each presentation. We found this very helpful because you could take notes in the appropriate section and, if you could not attend a session, you still had the notes for the session. I attended all the classes with Bob and found the notebook very helpful. Bill Rubenstein's presentation of "Using Both Halves of Your Brain" was well

attended and was a novel approach to woodturning. We attended his first session and found it very interesting. We also talked to a number of people that attended his class and really enjoyed it.

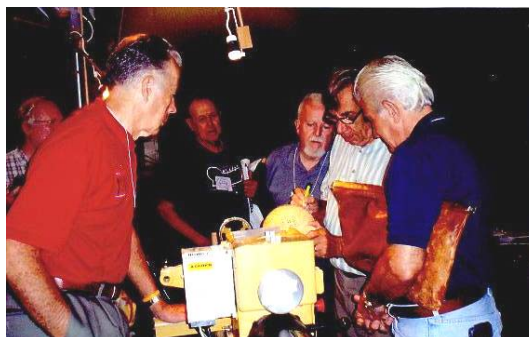
The vendors were well represented with Woodcraft and Craft Supply among the participants. Bill and Dixie manned the Stubby Lathe

booth and Steve White had his Rose Engine booth. Steve also did a Rose Engine presentation.

Raffle tickets were sold for \$1 each or 12 for \$10 with the "big" prize being a large Powermatic lathe. Drawings were held for many pieces donated by outstanding turners (including the lead demonstrators), a mini-lathe, wood, tools, gift certificates, books, DVD's and even a class at the Canyon Studios.

All in all, this was an excellent symposium. It was well attended with about 525 attendees. Next year the symposium will be held in Waco, Texas in October. So if

you're looking for an affordable, well organized symposium within driving distance, give this a try. Their website is www.swaturners.org.





AAW 2008 Symposium

June 20-22, 2008

Richmond, VA

COLLABORATIVE PROJECT UPDATE

The outer shell of our turtle is finally constructed and only needs a little hand sanding. We are working on the head and feet now. It looks great and should be complete in a few months. This project proved to be more complicated than first thought but the final result will be worth the extra effort. It looks like the 2008 symposium will see our wonderful sea creature. If you would like to participate in our collaborative project the next meeting will be held on February 16th at Bill Farney's home.



MEMBERSHIP APPLICATION --WOOD TURNERS OF ST. LOUIS

\$30 Individual Membership • \$40 Family Membership

NAME _____

STREET ADDRESS _____

CITY _____ STATE _____ ZIP _____

HOME PHONE _____ WORK PHONE _____

E-Mail _____

Mail this application along with your check for one-year's dues to:

Woodturners of St. Louis
10 Ramblewood Lane
St. Louis, MO 63141

or, bring it to the next Meeting.

WOODTURNERS OF ST. LOUIS

Micki Keim, Editor
2649 Forest Glen Estates Drive
Pacific, MO 63069

CALENDAR

January 20, 1-4pm

Regular Meeting at Woodcraft
Demo - Baldor grinders and
Drives

February 16, 9am-3pm

Collaborative meeting

February 24, 1-4pm

Regular Meeting at Woodcraft

March 23, 1-4pm

Regular Meeting at Woodcraft