



WOODTURNERS OF ST. LOUIS

stlturners.org

April 2013

A Chapter of the American Association of Woodturners

April Demo > Jon Spelbring – Table Legs● Turning a table leg takes some skill; turning four or more table legs of the same shape takes more skill and lots of practice. Jon provided a demonstration on all aspects – from a craft style (basically a 2x2 with no turning), to a straight tapered leg, to a Cabriole style requiring off-set turning.



After making sure the stock is square and that you have completed any mortising for attachment you are ready to turn. The center of each end is marked by drawing from corner to corner, the

Contour
gauge.



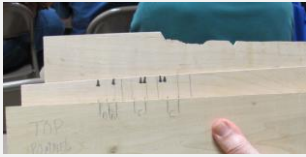
center mark dimpled with a spring loaded center punch and then set between drive centers. Jon used a safety center so that the stock would slip if a catch occurred (steb center could also be used). He then marked the leg according to the design he would follow. Several techniques were demonstrated: a contour tool (which would be placed on a pattern being duplicated and then transferred to the new legs); a story stick with pencil marks at

each of the key details and diameters (several calipers with their tip rounded and set for each of the major diameters will speed up this process); and a scratch board (brads were hammered into a board and then the heads cut off to allow marking cylindrical stock with the location of key details). He also showed a special set of calipers that would quickly measure stock diameter.

Diameter calipers.

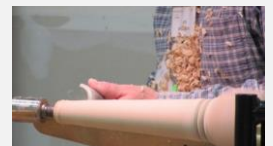


Marking templates.

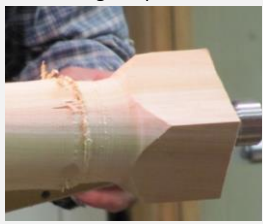


After going through the anatomy of a table leg: pommel, knee, body, ankle, and foot, Jon marked and cut the first line for the pommel using a skew (long point down) with a rolling motion to give a clean demarcation from the square mounting stock to the turned body of the leg. By using the tool rest set at an angle to the turning axis, holding his hand on the tool rest, locking his arm against his body, and swaying his body, the body of the table leg was tapered to a rough shape. About ¼" was left at the foot so that any marks from the tail stock could be removed.

Using tool rest to rough taper the leg.



Cutting the pommel.



Jon then moved on to turning a Cabriole style leg which requires off-set turning for both the head and tail positions. Information on relationships between the diameter of the foot, diameter of the head, and length of the leg will be available on the NEW web site in the near term.

The key to success is accepting similarity. If you get the layout correct and diameters and shapes close, the legs will start looking identical to the eye. Plus slight variations add the human element that machine duplication lacks.

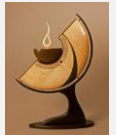
Pre-Meeting Demo> Dan Burleson – Roughing Techniques● Using his production turner techniques, Dan demonstrated how to quickly take rectangular stock to a cylinder. Marking from corner to corner on the ends he showed how you can end up with a small rectangle near the



middle and then how to determine the center. Dan demonstrated how to use several tools: roughing gouge, bowl gouge, skew, and a bedan for quickly removing stock. To protect his hands from the shavings Dan wears a snug fitting leather (no suede or cloth) glove with the finger tips removed.



Alan Carter Demo/Hands On● Over 30 members and guests from the STL Woodturners, Festus Show Me and Springfield Land of Lincoln Clubs attended the Alan Carter demonstration on April 6th at the Kirkwood High School. Alan has a background in the arts, music (trombone player), painting, and furniture design. He only recently started turning and has developed a unique style featuring thin long stemmed goblets, suspended vessels and split bowls.



Alan first demonstrated the turning of a suspended vessel which can be viewed on a YouTube video at: http://www.youtube.com/watch?v=u0X_O50Rji0. He turned the vessel and then designed the artistic supports. Along the way he provided tips on the use of cardboard cut outs to test shapes and the use of magnets to attach the pieces. He showed how CompWood could be used for the thin antennae and discussed the use of airbrushing and dying to bring out the grain and rays in the wood structure.



In the afternoon Alan turned one of his signature split bowl vessels. First he turned the bowl, then cut it on the band saw and glued it back together. He pointed out that using veneer with an accenting color could be used to detract for any differences side to side. Alan used calipers that he had designed to measure wall thickness of the bowl. Plans for the calipers will be available on the NEW club web site. Alan also has a YouTube video of his split bowl turning available at: <http://thegeekgroup.org/2013/03/30/woodturning-guild-alan-carter-turns-a-split-bowl/>.

Additional links to some of Alan's references from the demo are provided below. You will need to contact him for his recommendation to get you on the World of Woodturners.

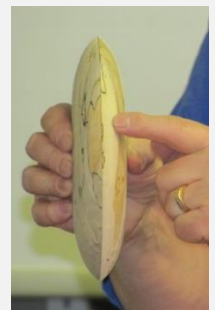


Magnets <http://www.kjmagnetics.com/categories.asp>

WoW <http://worldofwoodturning.com/>




CompWood <http://compwood-products.com/index.php>

Fluted Beams <http://www.flutedbeams.com/discovery.html>



Special thanks to James Payne for scheduling and working out the details for this demonstration; Chris Weiler for his work with the video camera so that we could see the demo on the big screen; to Laura for bringing the cookies; and all of you who supported the demo with your attendance.

On Sunday Alan hosted a hands-on seminar at Craft Alliance with several of our members successfully turning their own split bowl vessels.

		
Walt Ahlgrim, Alan Carter, Don Dylewski, Laura Spelbring	James Payne	Class Project



Library News > Rich Hinkebein ● Last month the following items were added:

- American Woodturner magazine April issue. (Page 57 contains an article about Dan Burleson of our club and there is an excellent article on making art personal but not infringing on another artist's work.)
- Turning for Furniture, a DVD by Ernie Conover. This DVD by Ernie Conover is worth watching for those interested in including turned parts in their furniture. It has a similar title to another DVD done by an excellent furniture maker. Although there are still things to learn from that DVD, his primary turning tools seem to be a heavy scraper and course sandpaper.
- Note: The April issue of Woodturning Design which we listed last month includes an article on making a table using off-center turning for the pad-foot legs.

Our library is only open on Sunday at our club meetings and is open to all our members for checking out books, videos, and DVD's.

When checking out material, sign/date the card and put it **BEHIND** the letter of your last name in the box. When you return material make sure you put the card back in the item and that the card goes with that item. Watch that you do not put multiple cards in one item. And please sign legibly so you can be tracked down if something is amiss. If you are going to miss a meeting you can return the library material to WoodCraft at any time. However, when you do this, call or email Rich so that he is aware and can get it from them.

Our library is a great source of inspiration and knowledge. A complete listing of our library is on our club web site. Please take advantage of this wonderful club benefit.

Tip of the Month ● To provide a uniform overhang (such as the top to a split vessel), put a washer on the end of your pencil and then trace the pattern. The washer will provide a uniform marking distance from the edge as it is moved around the pattern . - *Alan Carter*



President's Spin > Jon Spelbring ● Hey, spring has finally arrived! Well, for today anyway. As I write this, it's 80 degrees, but in two days, the temp will drop to the 50s. Our March meeting was cancelled due to.... SNOW. Ah, life in the midwest.

Anyway, on to matters of turning. We had a great demo with Alan Carter, and I'd like to thank James, Dave, and everyone else who worked to make this happen. I know I enjoyed both the demo and the hands on. I hope everyone else did too.

I believe that I've ensured my popularity with the introduction of cookies to the monthly meetings. It was either that or turn something totally amazing - cookies are so much easier. So far, we've not had any leftovers.

I know you've been reminded, but I was just re-reminded to remind you.... wait, what was I talking about. Oh yeah, Laura wanted me to remind everyone that she's still looking for more vases to use as centerpieces at the picnic.

Also in the news - the new website (<http://turnedtreasuresllc.com/wstl2/>). By now, most of you should have received an email telling you how to create an account on the new system. It's more interactive than the old one, what with picture galleries, discussion forums, and more. If you have any questions about it, please feel free to contact me, or Charlie. If you have comments, good or bad, I would like to hear them. As club members, it's your site.

I would also like to thank all of those who have been participating in the President's Challenges. We've had some good, positive response, and some excellent entries. Remember, next month will be anything that is Segmented/Laminated. I'll leave the exact meaning of that to your imagination.

I guess that's a wrap for this month. I will not be at the May meeting, so I'll see you in June.

-Jon

Club News>

Membership dues are due● Dues for 2013 became payable at the end of last year. An [application](#) is available on the club web site. Dues are \$30 individual; \$40 family. Please make sure that the contact information we have on file is correct (check the on-line roster on the club web site under "members only").



Attendance/Treasurers Report● Fifty two members/guests attended the April meeting. Walt reported a balance of ~\$2400.

Donations● Thanks to Binh Pho for donating a book authored and signed by him to the library, to St. Charles Hardwoods for donating a gift certificate, and to Craft Supplies for donating gift certificates for the door prize drawing.

Sandpaper● Thanks to Ray Koeneman and Dan Burleson for bringing in and distributing two large boxes of sandpaper to club members. Dan now has the connection with the sandpaper distributor and should be able to get more in the future.

AAW 27th International Symposium● The symposium is in Tampa on June 28-30. If you are interested in sharing a room, contact Dan Schmoker.

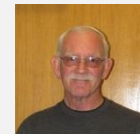
Turning Demonstrators● In addition to our club looking for in-house demonstrators, the turning clubs in Springfield, MO, Springfield, IL; and Columbia, MO are also looking for demonstrators. Expenses can be negotiated with the local clubs. Contact Jon Spelbring if you would like more information.

Stewartship Week● John Anderson and Dan Schmoker told the club about the Springfield Club (Land of Lincoln Turners) demonstrations for kids from K-6 with the Forest Resource Center in Illinois. In addition to demonstrating, they provide prizes for the kids. This year they gave the kids tops that the Land of Lincoln Club members had turned. John held one of the tubs with some of the remaining tops – over 300 were distributed to the kids. If anyone would like to contribute tops to this cause for next year, contact John.



Web site● The new site is open: <http://turnedtreasuresllc.com/wstl2/>. You should have received an email from Jon on how to set up an account. Every club member will have a unique log-in, password, and their own gallery. In addition, a classified section will be available to list items for sale. Thanks to Jon for taking on this task. Once we get the current URL to direct hits to this new site the old site will be discontinued. However, at that time you will be able to access the new site by typing in www.stlturners.org.

New Member● Please join me in welcoming Rick Madden from O'Fallon, MO.



Lathe safety shield● We are obtaining the design used by the AAW at symposiums. That design allows for lighting, video, and speakers to be on the same mounting system as the protective shield. It is still in work!

Picnic Planning● **September 29 is the NEW date** for our club picnic. Note that it is on the 5th Sunday versus the 4th Sunday of the month. Laura is asking members to turn a vase to be used for arrangements at each of the tables. They can be wet or dry and of just about any size (4" – 12"). There may be a "vase exchange" or awards – TBD. Let her know ASAP that you will be turning one for the picnic.

More information on activities and a map will be available at the meetings and in future newsletters.

Coffee and Cookies● Complementary coffee is available at the meetings. Cookies are 50 cents each and purchased on the honor system.

President's Challenge>



March Crazy Eggs● The March challenge was to turn a crazy egg and since we were snowed out last month it was carried over to April. There were a wide range of turnings including boxes and off-center eggs. Dan Hill's carving enhanced eggs were the people's choice winner with his dog carvings on turned basswood eggs. Pictures of the other entries are in the Show and Tell section of the newsletter.

April Tops● From one to a bowl of tops we had several entries for the April President's challenge. Ernie Guhl's Lady Bug decorated tops were the people's choice winner. Pictures of the other entries are in the show and tell section of the newsletter.



May Segmented and/or Laminated• The President’s Challenge for May is to turn anything – as long as it is a segmented or laminated piece. A gift certificate will be awarded the winning turning and all entrants will get credit toward the year end drawing (minimum of 6 entries during the year). Please wait until the break to make sure all entries are signed in and then vote for your choice. Just get one of the voting slips from Laura, write down the number next to the turning of your choice and put the slip into the ballot container.

Upcoming Events:

Calendar of Events		
May 19	Meeting at Woodcraft (<u><i>Note that it is on the 3rd Sunday of the month</i></u> due to Memorial weekend falling on the 4 th Sunday.)	Demos TBD
June 23	Meeting at Woodcraft	Demos TBD

April Show & Tell

Segmented bowl by Rich Hinkebein.



Pen turned by Brandon Harris.

Vessel turned by Allan Chin from Scotch Pine.



Box decorated with a Rose Engine by John Buehrer.



Leather laced bowl by Charles Yonk.



Beaded plates, scoops with kinked handles, and beaded vessel by Dan Burleson. The top plate is ~28" in diameter.



Suspended vessel and split bowl vessel by Bill Farny.



Pieces turned by Dan Schmoker when attending a Jimmy Clews seminar in Los Vegas. Brass was used as an accent on the African drum box lid. A copper wire was an accent on the burl box.

Cross grain pepper mills by Jeff Nasser.



Bird house by Dennis Walker that was constructed entirely from $\frac{3}{4}$ " material. The walls were cut like barrel staves, the top made up of stacked rings, and the bottom from a disk.



African drum box and plate turned by Tom Brocks at a seminar with Jimmy Clews.

Entries for the President's Challenge – March Crazy Eggs

			
Bob Goulding's egg with cactus enhancement.	Laura Spelbring's basket of eggs.	Hatched egg by Bill Farny.	Set of eggs by Chris Weiler (at least one of them is a box).
			
Jon Spelbring's egg.	Off center turning with an egg in an egg in an egg by Rich Hinkebein.	Exotic wood egg turnings by Jeff Nasser.	Dixie Smith did a 3 axis off center turning for his eggs.
			
Hollowed and pierced egg by Charles Sapp.	Over hard egg by Charles Yonk.	Chip carved eggs by Dan Hill.	Color enhanced egg turning by John Buehrer.

Entries for the President's Challenge – April Tops



Bowl of tops by Dan Burleson.



Bowl of tops by Bill Farny.



Top by Jon Spelbring.



Martini top by Laura Spelbring.



Tops by Rich Hinkebein.



Ballerina tops by Charles Sapp.

American Association of Woodturners • The AAW is dedicated to providing education, information, and organization to those interested in woodturning. You can join the AAW at their site: <http://woodturner.org/member/MemberLogOn.asp>. Membership comes with access to on-line training information and includes a subscription to the *American Woodturner* magazine. The 27th international symposium will be held in Tampa, Florida, June 28-30, 2013. Our club is a chapter of the AAW.

Woodturners of STL
771 Meadow Cliff Drive
St. Charles, MO 63303

Join the Woodturners of St. Louis: If you like turning wood, making things on your lathe and want to learn more about woodturning then join the Woodturners of St. Louis. Learn and share ideas with like-minded Woodturners of St. Louis. Our chapter normally meets from 1:00pm to 4:00 pm on the fourth Sunday of every month at Woodcraft Supply; 2077 Congressional Drive (Westport area), St. Louis, MO 63146.

<http://www.stlturners.org>

Facebook site • Check out the club Facebook page:

<https://www.facebook.com/pages/Woodturners-of-St-Louis/292734664135601> and “Like” the page (click on the “Like” icon) to receive updates.



Board Members

President:	Jon Spelbring	618.698.3626	jon@spelbring.net
Vice President:	Dan Burleson	636.299.6302	danburleson1@gmail.com
Secretary:	Charles Sapp	636.928.0149	cwsapp@charter.net
Treasurer:	Walt Ahlgrim	314.567.5268	stlwoodturner@sbcglobal.net
Conf. Admin.	James Payne		jpayne.2011@gmail.com
Newsletter:	Charles Sapp	636.928.0149	cwsapp@charter.net
Librarian:	Rich Hinkebein	636.332.2396	kathryna1945@yahoo.com

Questions: info@stlturners.org