



# WOODTURNERS OF ST. LOUIS

A Chapter of the American Association of Woodturners

stlturners.org

June 2014

## June Demo > Dave Ackmann – Functional Holiday Table Favors

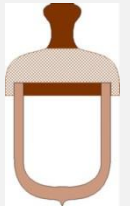


Inspired by his wife who requested 17 table favors for Thanksgiving dinner, Dave has developed several designs for quick, inexpensive, easy to make in quantity, and functional boxes. An acorn for Thanksgiving, a firecracker for July 4<sup>th</sup>, and an ice cream cone for the hot days of August were demonstrated at the meeting.



Dave bases his acorns on a [DVD by Ron Brown](#) entitled “Acorns Gone Wild”.

Dave’s acorns are made for table favors (typically with something inside like a note or other item) so they tend to be larger than a standard acorn. For the cap stock (3” long x 1.75” square) he likes to use mahogany, cherry, or walnut. For the base stock (3.5” long x 1.25” square) he uses red oak or butternut.



The cap stock is placed in a scroll chuck and turned to ~1.5 - 1.65” diameter. A 1 1/8” Forstner bit in the tail stock is then used to bore a recess about 3/8” deep and the outside of the cap is roughed to shape and a stem formed. A [Wagner texturing tool](#) with 12 TPI is used to decorate the cap. (Editor’s note – check the “multiple pictures and video tabs” on the Craft Supply



web site to see a close up of the tool, some examples of the texturing patterns, and a video of the tool being used.) Once the top is parted off, a jamb chuck can be used for final texturing and shaping.



The base stock is turned to a 1.2” diameter and a 7/8 or 1” core box router bit used in the tail stock to drill out the base to about 1 1/4” deep. A Forstner bit can be used but the router bit creates a nice concave finish on the bottom of the acorn box. A 1/4” tenon is then turned on the end to provide a good fit with the cap. (If you remove too much material on the tenon just cut it off and go again. You’ll just have a shorter base.) Using a depth gage, mark the bottom of the interior on the outside and shape the bottom of the base. Once it is



parted-off, a jamb chuck can be used for final shaping. Apply finish of your choice.

Dave also demonstrated the turning of a fire cracker box with an American flag on the inside and an ice cream cone. The cone is used to hold toppings for ice cream – sprinkles, nuts, .....



Detail information on turning all of these boxes can be found on our web site under the [about-us / project tab](#).



Dave is considering writing a book on this subject and would appreciate any of your suggestions. He has a great start – and as his wife told him when she wanted 17 acorns, and when Bob asked him to be a demonstrator, “You’ll find a way.” Thanks Dave for a great demonstration on turning holiday favor boxes. (Editor’s note – thanks to Dave for providing a

detail write up of his projects and several pictures of the steps.)

## Pre-Meeting Demo> Bill Farny – Texturing Demo and Hands On● Texturing is an exciting way to



deform and enhance the surface of your turnings as we experienced during the demonstration and hands on workshops with Nick Agar. Bill Farny brought in several texturing tools and demonstrated how to use them and then offered members the opportunity to try them and ask questions.



**Chatter tool** – Typically chatter on a turning is bad, resulting in unsightly marks that you have to cut or sand away. But with proper control you can make it decorative. It is more of an art than a science and almost impossible to duplicate patterns. It is for use on end grain of close grained woods like maple, cherry, and walnut. Patterns are a function of lathe speed, cutting tip shape, spring of the chatter cutter, and angle. It produces a high-pitched squeal when done properly so wear ear protection. Cutting above or below the centerline will change the direction of the spiral. [Rockler](#) has an excellent write up on using the tool to create designs.



**Wagner texturing tool** – This tool works on both end and side grain and generates a variety of patterns from dots to spirals. Cutting both right and left will create a diamond pattern. When aligned with the centerline of the lathe the tool makes a diamond pattern for both end and side grain. When it is above or below the centerline on the end grain it will create a swirl. The direction of the swirl changes direction above/below the centerline.



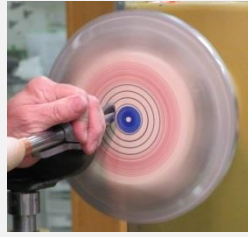
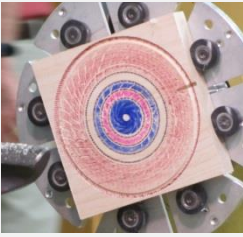
**Elf tool** – The decorating Elf tool holds Dremel style end cutters ranging from ball, cylindrical, to elliptical to generate a variety of textures. The Elf works on both side and end grain surfaces. It can be purchased [commercially](#) or [homemade](#).



**Sorby texturing tools** – Sorby make a series of spiral and texturing tools ranging from a micro to their large size. They will work on both end and side grain turnings. The pattern is a function of the angle of the tool, speed of the lathe, and position of the tool. A platform is installed on the shaft with reference settings so that cuts can be repeated. The wheel with one beveled edge is used to turn a spiral. The teeth are engaged on the wood to start the cut and then the tool is moved down the length to cut a spiral. The nut that secures the cutters may need to be moved to the opposite side depending on the direction of cut to keep it locked in place. [Sorby](#) provides videos on how to use and sharpen the tool.







Bill then chucked a large square block of wood and demonstrated how wall hangings can be created using the tools that he had been demonstrating.

Follow the demo, Bill invited club members to try the various texturing tools and have some hands on experience. Thanks Bill for a learning experience on a variety of tools to enhance our work.



### Library News > Rich Hinkebein● Last month the following items were added:



- *American Woodturner* magazine – good articles on wet sanding and scroll chuck maintenance.

A reminder to all members: *"If you can't get to a meeting:*

- *You can return that item to the Woodcraft store at your convenience, just put your name and St. Louis Woodturners on the item and the store will get it to me.*
- *You can ask another member to return it.*
- *You can mail it to me or the store.*

Our library is only open on Sunday at our club meetings and is open to all our members for checking out books, videos, and DVD's.

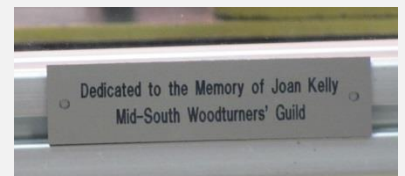
When checking out material, sign/date the card and put it **BEHIND** the letter of your last name in the box. When you return material make sure you put the card back in the item and that the card goes with that item. Watch that you do not put multiple cards in one item. And please sign legibly so you can be tracked down if something is amiss.

Our library is a great source of inspiration and knowledge. A complete listing of our library is on our club web site. Please take advantage of this wonderful club benefit and return items in a timely manner.

### Safety Shield Dedication● The plaque in recognition of Joan Kelly was



formally installed on the safety shield at the June meeting by President Bob Goulding and VP James Payne. A contribution for its construction was provided by The Mid-South turners in memory of their member, Joan Kelly, who died of injuries from flying material while working on a lathe. We are grateful for their contribution to the safety of our members. Thank you Mid-South



Woodturners' Guild.

**Tips of the Month** • [Decals](#) are another way to enhance and personalize your turnings. They can be designed on the computer, printed, and attached to your work. Acrylic finishes are non-yellowing and protect the decal. – Bob Goulding



Mineral oil is often used for finishing food safe items. Rural King or similar suppliers offers food grade mineral oil by the gallon. The price is a lot cheaper than buying small quantities. – Jon Spelbring

**IKEA lamps** – Gail and Jan have returned from Florida with the IKEA LED flex lamps that were ordered. If you ordered one, please contact them. The Lincoln Land Turners have defined the steps to turning a lamp base for the IKEA LED flex lamp that is posted on our club web site under [projects](#). Harbor Freight has [2" magnets](#) with a 25# pull and a 3" with a 95# pull so that the lamp can be attached to your lathe.



**President's Spin > Bob Goulding** • Sorry about having to cancel last month's meeting. As you can see, the renovation of this classroom is progressing slowly. Last month all the stuff from the storage room was piled in here. Shelves have now been constructed in that area and this area is being cleaned up. We will reschedule Jim Adkins in the fall for his demonstration on turning Native American platters.

Thanks to Dan Burleson for picking up the sandpaper that is free to our members. The items that several of you turned a while back are being given to the distributor and he is most appreciative – as are we of his sandpaper cut-offs.

I encourage all of you to turn and submit an entry in the President's challenge next month which is to turn a Holiday Table Favor. It can be of any shape, size should be compatible with sharing at a holiday table, design related to a holiday, and functional. In addition to our standard holidays, a link is provided in the newsletter to some of the more obscure ones.

Congratulations to our Newsletter Editor, Charles Sapp. The club newsletter took third place in the AAW National Symposium Chapter Newsletter competition.

When Nick Agar did his demonstration recently he left the pieces he turned. One was given away as a door prize at the June meeting. The other two will be raffled off at future meetings with the funds going to Dave Endres to help reimburse him for the week of expenses hosting Nick Agar. Dave's hosting of Nick provides a tremendous savings to our club and helps keep the cost of the demonstration and work seminars low for our members. – Bob Goulding

## Club News>

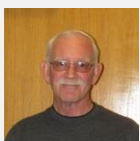
**Membership dues are due** • Dues for 2013 became payable at the end of last year. An [application](#) is available on the club web site. Dues are \$30 individual; \$40 family. If you are renewing, please make sure that the [contact information](#) we have on file is correct.

**Attendance/Treasurers Report** • Thirty six members/guests attended the June meeting. – Walt Ahlgrim

**Web site●** Each member can up-load pictures to their profile. If you would like to be featured on the home page, provide Jon Spelbring with 4 to 6 good quality pictures (640 x 480) of your turnings with the same background. If you have any problems with web site operation, downloading, or general suggestions please contact the officers.

**Coffee and Cookies●** Complementary coffee is available at the meetings. Cookies are 50 cents each and purchased on the honor system.

**President's Challenge> May – Platter●** The May President's Challenge was to turn a platter. Judging was delayed due to the cancellation of the meeting last month. The winning entry, selected by the members at the June meeting, was this Native American style platter turned by Rick Madden. Congratulations to Rick. The other entries in the May President's Challenge are shown in the picture section of the newsletter.



**President's Challenge> June – Bird House●** Rich Hinkebein was selected by the members as the winner of the June President's Challenge to turn a bird house. Rich turned this African Blackwood bird house with an off axis holly base and finial. The other entries in the June President's Challenge are shown in the picture section of the newsletter. Congratulations Rich.



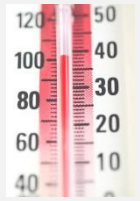
**July's President's Challenge –** In following with the June demonstration, the President's Challenge in July is to turn a functional holiday favor. Any holiday, any design; size should be compatible with sharing at a holiday table, and functional. One entry per member; entry must be turned within the last three months for the competition. If you need more than the standard holidays – check out these sites for more ideas: <http://www.timeanddate.com/holidays/us/> and <http://www.holidayinsights.com/everyday.htm>.

**Members in the news●** Dan Burleson hosted a platter turning demonstration to the Greater St. Louis Art Association in May and is now a member of the association. Pictures from the demonstration can be found at: [GSLAA](#) until September 2014. The Lincoln County Journal did an [article](#) on Dan as the "local artist" and also included a [slideshow](#) of his booth at the Art and Air Art show at Webster Grove University.

**Links●** We have a web page dedicated to links to other sites that have been reviewed by our members. If you have a site that you have found useful, please add it to the club site or send them to me and I'll load them for you and include them in the newsletter.

Dave Ackmann recommends – [How to Cut Logs for Turning](#); [As Wood Turns](#); [Carl Jacobson / multiple projects](#)

**Collaborative**• The AAW sponsors a competition for clubs to turn a collaborative. What is a collaborative? It is a project that is completed by as many club members as possible, with a minimum of six participants working as a team. All team members must belong to the AAW. Pieces are judged in three categories: artistic, mechanical/technical, and fantasy. The collaborative meetings **in July and August are CANCELLED** in anticipation of a heat wave. Bill's shop is closed off from the main house to prevent the spread of dust and does not have air-conditioning.




## Symposiums>

• **Turn on! Chicago**> The [Chicago symposium](#) will be held from August 15-17<sup>th</sup> at The conference Center of the University of St. Mary of the Lake in the northern suburbs of Chicago.

**American Association of Woodturners**• The AAW is dedicated to providing education, information, and organization to those interested in woodturning. You can join the AAW at their site: <http://woodturner.org/member/MemberLogOn.asp>. Membership comes with access to on-line training information and includes a subscription to the *American Woodturner* magazine. Our club is a chapter of the AAW.

## Upcoming Events:

Calendar of Events		
July 27, 2014	Photographing Your Work at Woodcraft	Members can bring in up to 3 pieces to be photographed at no charge at the pre-meeting demonstration. Dave Endres, Jon Spelbring, James Payne, and Bob Goulding will provide a panel discussion and demo on ways to photograph your work for the main demonstration.
August 24, 2014	TBD	TBD
Sept 28, 2014	Picnic - Spencer Creek Park 200 Sutters Mill Road, St. Peters, MO  A map to the picnic can be found at: <a href="http://goo.gl/maps/p8rWT">http://goo.gl/maps/p8rWT</a> .	Laura Spelbring would like for members to turn salt and pepper shakers for the picnic tables. She will provide the top and bottom hardware. You just need to turn the part in between. The vases turned last year will also be used on the tables. Contact Laura for the shaker hardware. 

## June Show and Share



Walt Ahlgrim is no longer boiling his green wood and donated his pots for door prizes.



Platter by Rick Madden.



Cherry platter turned by John Buehrer.



Walnut bowl with African Blackwood finial by Rich Hinkebein.



Bird house by Ray Koeneman.



Box turned by Alan Chin.



Jeff Nasser's segmented pepper mill made from birch, holly, and Bacote.



## Additional Entries for the May President's Challenge – Platter



Wood burned leaf platter by Ray Koeneman.



Jon Spelbring turned this plate, textured the surface and colored it with a gray crayon.



Off axis turning with texturing and airbrushing by Charles Sapp.



Platter with airbrushing by Laura Spelbring.

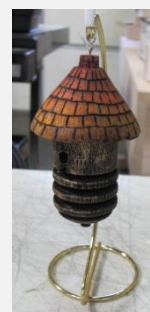


Walnut platter with copper ring inlay by Rich Hinkebein.

## Additional Entries for the June President's Challenge – Bird House



Bird house by Ray Koeneman.



Wood burned roof with airbrushing over textured and gilded house structure by Charles Sapp.



If you like turning wood, making things on your lathe or want to learn more about woodturning then join the Woodturners of St. Louis. Learn and share ideas with like-minded Woodturners of St. Louis. Our chapter normally meets from 1:00pm to 4:00 pm on the fourth Sunday of every month at Woodcraft Supply; 2077 Congressional Drive (Westport area), St. Louis, MO 63146. <http://www.stlturners.org>

**Facebook site** • Check out the club Facebook page:

<https://www.facebook.com/pages/Woodturners-of-St-Louis/292734664135601> and “Like” the page (click on the “Like” icon) to receive updates.



#### Board Members

President:	Bob Goulding	636.745.2333	<a href="mailto:bobisturner@yahoo.com">bobisturner@yahoo.com</a>
Vice President:	James Payne		<a href="mailto:ipayne.2011@gmail.com">ipayne.2011@gmail.com</a>
Secretary:	Charles Sapp	636.928.0149	<a href="mailto:cwsapp@charter.net">cwsapp@charter.net</a>
Treasurer:	Walt Ahlgrim	314.567.5268	<a href="mailto:stlwoodturner@sbcglobal.net">stlwoodturner@sbcglobal.net</a>
Conf. Admin.	James Payne		<a href="mailto:ipayne.2011@gmail.com">ipayne.2011@gmail.com</a>
Newsletter:	Charles Sapp	636.928.0149	<a href="mailto:cwsapp@charter.net">cwsapp@charter.net</a>
Librarian:	Rich Hinkebein	636.332.2396	<a href="mailto:kathryna1945@yahoo.com">kathryna1945@yahoo.com</a>

Questions: [info@stlturners.org](mailto:info@stlturners.org)