

WOODTURNERS OF ST. LOUIS

A Chapter of the American Association of Woodturners

stlturners.org

September 2014

September Picnic>



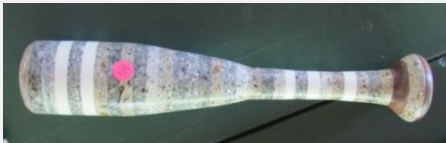
The annual club picnic was a great success with about 50 club members and family attending the event at Sutter Mill Park. Special thanks go to Laura Spelbring for coordinating the event, making the flower arrangements in the vases turned by club members for the table decorations last year, and for fixing the coffee. Thanks also to Rob Conaway and Ron Andracssek for doing the cooking; to Ray Koeneman for reserving the pavilion; to all members and their families that attended and brought that great food; and those that helped set up and clean up.



Sell, Swap, Socialize● Grinders, locks, hinges, and Corian were offered at the swap and sell table. Members found some great bargains and had an opportunity to socialize before lunch. Ticket sales on the Nick Agar turning from his seminar with the club have now gone on sale. They are 2 for \$5. See Walt to purchase a chance on the turning. The winner will be announced once all the slots on the sheet are sold.

		
<p>Swap and sell items.</p>	<p>Thanks to Ernie Guhl for bringing in several Corian samples.</p>	<p>Bob Goulding, Dave Ackmann, and Jeff Becker check out the bats that were turned for the Pres. Challenge.</p>
		
<p>Claire Andracsek and Sharon Goulding</p>	<p>Michael and Jackie Blankenship are trying to understand just what went wrong with Bob Goulding’s bat. (It was curved – by design.)</p>	

President’s Challenge – Turn a baseball bat● Members voted for two categories - “the most realistic” and the “most unusual” bat. Jeff Becker and Dave Ackmann (Corian cut outs from bracelets assembled on a shaft and glued with CA) tied for of the most realistic bat and Charles Sapp was the winner of the most unusual (multiple off center sections, texturing, and gilding). Congratulations to Jeff, Dave, and Charlie. The other entries for the President’s Challenge are shown below.





Off center bat design by Jeff Nasser.



Bat with added mass at the sweet spot by John Buehrer.



Bat designed for curve ball pitches by Bob Goulding. A couple of off center turnings and a lot of shaping with a rasp and sandpaper is how Bob described his finished product.

Following lunch, Bob announced the batting challenge with the entries was starting. The contestants took the field and were allowed a brief time to warm up. Competition was single elimination, meaning that you got one try and if you failed you were out. So the competition for each challenge moved along at a brisk pace. Prizes (gift certificates) were awarded to Jeff Becker for longest hit with a conventional bat and John Buehrer for longest hit with an unusual bat.



Dale Sapp, Kathy and Dave Ackmann, Jeff and Paula Becker, and John Buehrer.



John Buehrer comes out swinging with his modified bat.



Paula Becker used Jeff's bat for the challenge.



Bob Goulding trying to figure out if he can hit anything but a curve ball with his bat.



Sharon and Bob Goulding watch as Jeff Becker hits the winning ball for distance with a conventional bat.



Dale Sapp steps to the plate with Charlie's turning.



Other members also got into the action and gave it a try. Here, Ron Andracsek Jo Williams have their eye on the ball.



Jeff Nasser takes a cut at the pitch.



Dave Ackmann, Paula and Jeff Becker appear to be amazed that someone either hit the ball or whiffed it.



John Buehrer, Rob Conaway, and Bob Goulding wait for their time to hit.


Critter building• Creating critters and works of art from scrap turnings is always a favorite activity of the picnic as it gets a lot of family members involved. As soon as the hot glue was ready, the scrap pieces were gathered by up by the teams to assemble their creation. Three teams created pieces. Each piece was judged by the audience. Gary Johnson, Bill Farny, Jan Hoffman and Gail Elble created the winning piece.



		
<p>Claire Andracsek and Ray Koeneman</p>	<p>Ray Koeneman, Jan Hoffman, Bill Farny, and Gary Johnson</p>	<p>Participants</p>
		
<p>Ray (glue man) Koeneman and Claire Andracsek with their entry.</p>	<p>Participants and spectators.</p>	<p>Mrs. Brandon Harris and Jenny Harris with their entry.</p>

Table Decorations● Laura Spelbring put together the flower arrangements for the table decorations with the vases that members turned last year. Dan Schmoker brought a new table decoration turned from multiple (~5) bittersweet vines.



 **President's Spin > Bob Goulding**● Thanks to everyone for their help with the picnic. The food, President's Challenge batting event, and critter building were outstanding. Well done everyone!

Our October meeting will be a special one with [Jim Adkins](#) turning a beaded platter. We will start the meeting at 11:30am so there will not be a pre-meeting. Jim's demonstration is expected to go until ~4:00 pm. We'll have a short business meeting when Jim takes a break. The President's Challenge for October is to turn an item of your choice – as long as it has a Halloween theme/focus.

Then in November we will have our ornament exchange at the wine and cheese social along with election of officers for next year. - Bob Goulding

Club News>

Attendance/Treasurers Report● Approximately 50 members/guests attended the September meeting/picnic.

October President's Challenge> Halloween Theme● Turn anything with a Halloween theme – caldron, broom, witch's hat,....turner's choice. One entry per member; entry must be turned within the last three months for the competition. A gift certificate will be awarded the winning turning.



October Meeting > Demonstration by Jim Adkins turning a Native American basket● Jim has been turning Native American baskets since 2004. His turnings are so realistic looking that until they are picked up, a person cannot tell that they are not a woven basket. Jim will be doing a turning of his basket at the October meeting. His demonstration will start at 11:30am and will continue into the regular meeting time. (So you may want to eat early or bring a snack.)



Library News > Rich Hinkebein● The library was open for returns and DVD check outs at the picnic. There were no items added to the library this month. But Rich is reviewing some new material and will have them available next month. If you have any suggestions for additions to the library, please contact him.



An index of our club library is available for members on the [club website](#).

Our library is a great source of inspiration and knowledge. Please take advantage of this wonderful club benefit.

Collaborative● Check with [Bill Farny](#) on the scheduling of the next collaborative meeting.

Nomination of Board Members for 2015● If you are interested in serving the club as a Board Member, please contact any of the current officers. Bob is currently serving the first of his two years and will be serving another year. All other positions will be up for election at the November meeting (Vice President, Secretary, Treasurer).

Scholarships / Training● The AAW offers scholarships/grants for training. For 2014 the AAW Education Opportunity [Grants](#) (EOG) had 70 applications and 27 were approved in the amount of \$36,640. Applications must be submitted by December 31 annually. Contact any of the officers if you would volunteer to write an application for our club.

In addition, the AAW Board of Directors announced a scholarship initiative. In recognition of the invaluable contributions made by our local chapters to our educational mission, twenty-eight scholarships to two of the nation's leading woodturning centers will be provided in 2015 to members of the American Association of Woodturners. Our chapter will be allotted one nomination.

If chosen by the AAW, the member submitted by our club for the scholarship must agree to host a demonstration for the club within 6 months of the training on the subject matter from Arrowmont or JC Campbell. If you are interested in being considered, contact President Bob Goulding (in writing/email) stating that you agree to the terms.

The program is to provide tuition only. Any room and board and travel to the school locations will remain the responsibility of the nominee. John C. Campbell Folk School is located in Brasstown, NC; Arrowmont is in Gatlinburg, TN. *All classes will take place in 2015.*

Club Members in the News>









• **Dan Burleson** – Dan has been a featured vendor at several shows – Schlafly Art Outside, Mosaic Festival for the Arts, and the Best of Missouri show at the Missouri Botanical Gardens.



• **Gary Hinegardner** – Featured in [Feast Magazine](#) for his Wooden Hat whiskey.

• **Turned Treasurers Gallery** – Several club members have their work on display and for sale at Jon and Laura Spelbring's new gallery in Belleville, IL at 225 East Main Street. Some of their work is shown below.

		
Dave Ackmann	Michael Blankenship	Dan Burleson
		
Cecil Robertson	Bob Goulding	Dave Ackmann & Bill Griffin

		
<p>Gary Johnson</p>	<p>Jon Spelbring</p>	<p>Laura Spelbring</p>
		
<p>Jeff Nasser</p>	<p>Steve Reynolds</p>	<p>Rich Hinkebein</p>
		
<p>Charles Sapp</p>	<p>Matt Kiem</p>	

Symposiums>

- [Tennessee Association of Woodturners](#); 27th symposium; Jan 30th and 31st, 2015; Franklin, TN
- [Woodturners of Southwest Missouri](#); Trent Bosch demonstration and hands on; Oct 11th – 13th, 2014; Springfield, MO

Upcoming Events:

Calendar of Events		
Oct 26, 2014	Both the pre-meeting and meeting time will be dedicated to a demonstration on turning native American basket weave platters. The demonstration will be hosted by Jim Adkins (Dan Burleson will be Jim's back-up if needed.) Demonstration will start at 11:30am.	
Nov 23, 2014	No pre-meeting.	Christmas party, ornament exchange, and election of officers
Dec 2014	No meeting. Merry Christmas, Happy New Year. Have a great Holiday Season	
Jan 25, 2015		Meeting demonstration with Bill Rubenstein. Topic TBD.
Feb 22, 2015		Meeting demo with Walt Ahlgrim turning open spiral candle sticks.

Holland Bowl Mill ● While traveling through Michigan this summer I came across some bowls labeled



"Holland Bowl Mill". In 2013 they were featured in the New York Times Gift list and they have been on Science and Discovery Channel's "How It's Made". Since we were coming back through Holland, MI, I made it a point to stop. The business was started in 1926 by Chester VanTongeren and is run today by his grandson, Dave Gier. They



manufacture many sizes of wooden bowls and sell all over the world. I was greeted by Dave and he graciously let me and my wife tour the mill.



Logs are purchased throughout the Midwestern states. They work with a lot of cherry, walnut, beech and maple. The logs are first cut into manageable sections and then into blanks for turning. Their large lathe produces bowls from 17" to 9" from the same block of wood using a coring technique and generating minimal scrap (note the blades to the right of the operator). The operator is able to core out a bowl in about a minute.



Bowls smaller than 9" are produced on a small lathe using the same technique. After drying for 20 – 30 days



on racks, the bowls are sanded on the inside and outside; inspected and treated with HBM's proprietary blend of beeswax and natural oils for a food safe finish and allowed to dry before shipping. Their finish, [B's Oil Wood Preserver](#), is available for sale.

Many of their bowls are ebonized. The ebonizing solution is made from vinegar and steel wool. The steel wool is soaked in a plastic container filled with vinegar which creates an "iron solution". When this solution is applied to cherry it reacts immediately and turns the cherry into a rich black color.



All of their bowls are turned green and come with a lifetime guarantee. If it ever cracks or warps from regular use, HBM will replace it. It was great to witness a business that provides a quality product that will be a keepsake for generations. — Charles Sapp

Super Glue● Starbond offers 2 oz of standard CA (thin, med-thin, med, med-thick, thick)for \$5 or 16 oz for \$30 plus shipping . Since there is a minimum order of \$25 we are looking into making a bulk purchase for the club. If you are interested in purchasing some of the CA, contact [Charles Sapp](#).

September Show and Share



Segmented vase and bowl by Michael Blankenship.



Bowl and art work by Bill Farny.



Miniature bat with carved wood spirit face by Charles Sapp.



Walnut bowl with Corian rim by Rich Hinkebein. Rich used the cut out from each rim for additional bowls and the small pieces for a segmented turning. He used Titebond II instead of CA. (If anyone finds a problem in gluing Corian to wood, please let us know so we can pass on the information.

American Association of Woodturners • The AAW is dedicated to providing education, information, and organization to those interested in woodturning. You can join the AAW at their site: <http://woodturner.org/member/MemberLogOn.asp>. Membership comes with access to on-line training information and includes a subscription to the *American Woodturner* magazine. Our club is a chapter of the AAW.

Remember to vote for your 2015 AAW Board of Directors. Voting must be completed by Oct 17, 2014.

Why join AAW? The collective value of existing publications available with a new membership exceeds \$120 – for a cost as low as \$45 (for an online membership). AAW continues to deliver more value and woodturning content to meet the needs of a diverse range of members. They have doubled their yearly publications count by complementing the six annual issues of *American Woodturner* with six issues of the *Woodturning Fundamentals* online magazine. As you may have heard, the publisher of Woodturning Design magazine recently announced they are going out of business. AAW's expanded publications will also help to fill any remaining gaps in the market for hands-on projects and information to help build foundational woodturning skills as a result of their absence.

Facebook site • Check out the club Facebook page:

<https://www.facebook.com/pages/Woodturners-of-St-Louis/292734664135601> and “Like” the page (click on the “Like” icon) to receive updates.



Join the Woodturners of St. Louis: If you like turning wood, making things on your lathe and want to learn more about woodturning then join the Woodturners of St. Louis. Learn and share ideas with like-minded Woodturners of St. Louis. Our chapter normally meets from 1:00pm to 4:00 pm on the fourth Sunday of every month at Woodcraft Supply; 2077 Congressional Drive (Westport area), St. Louis, MO 63146.

<http://www.stlturners.org>

Board Members

President:	Bob Goulding	636.745.2333	bobisturner@yahoo.com
Vice President:	James Payne		jpayne.2011@gmail.com
Secretary:	Charles Sapp	636.928.0149	cwsapp@charter.net
Treasurer:	Walt Ahlgrim	314.567.5268	stlwoodturner@sbcglobal.net
Conf. Admin.	James Payne		jpayne.2011@gmail.com
Newsletter:	Charles Sapp	636.928.0149	cwsapp@charter.net
Librarian:	Rich Hinkebein	636.332.2396	kathryna1945@yahoo.com

Questions: info@stlturners.org