

WOODTURNERS OF ST. LOUIS

A Chapter of the American Association of Woodturners

stlturners.org
March 2015

March Meeting Demo > Matt Keim: Turning Plates and Platters •

Matt Keim started turning platters when he worked with a club collaboration team – they felt everyone should have a wooden plate for meals. Since then Matt has gone on to turn hundreds of functional and artistic plates and platters for personal use and sales at art shows and farmers markets. Matt has found that “size does matter”; smaller plates are good for functional use but larger plates (16” to 22” diameter) sell better at shows.



One of the nice features of turning a plate is that you do not need a large block of wood. A piece $\frac{3}{4}$ to 1” in thickness (and it can even be tapered) works fine. Matt drills a pilot



hole and then mounts the piece on a OneWay screw chuck with spacer blocks (to accommodate the thinner stock). The tail stock is brought up for safety and it also creates a centering hole that will be used later. Using a Ellsworth grind on his gouge he trues up the bottom and the edge of the plate. Light shear cuts are made to minimize tear



out.

A foot is then cut on the bottom. The outside of the foot or a small recess in the foot can be used for gripping in a chuck when it is reversed. (If a recess is used keep in mind that a hole was drilled on the front surface so don't go too deep; $\sim 1/8$ ” is adequate for gripping.)



Using the tool rest as a guide and staying within the “V” formed by tool rest and the piece, Matt makes shear cuts with the bottom wing on the gouge while the flute is almost closed and the tool handle is down. If the piece continues to have some tear out, mineral oil (or whatever will be compatible with the final finish) can be used – mineral oil, walnut oil, ...



When the bottom is complete, the plate is reversed and mounted in the chuck making sure it gets a good register with the chuck jaws. The back side is checked for run out (out of balance) and adjusted if needed. The rim is turned first, finished and sanded (~ 400 grit) leaving the center mass intact for stability. Matt used a small skew to cut a bead to define

the rim area. A flat area is cut to the same depth on the inside and outside of the bead. The edge is also rounded over to reduce damage with use on functional plates.



The center is then taken down in steps. Working from the outside toward the center, material is removed until the bottom of the hole drilled for the screw chuck is reached.





Once the face is completed, the plate is removed from the chuck and reversed for finishing the foot. A vacuum chuck could be used but Matt typically uses a friction fit. He mounts neoprene with an adhesive back on a wood block and brings up the tail stock (to the same point from the initial mounting). The center of the plate is now thin and too much



pressure from the tail stock could crack the plate. A good rule of thumb is to hold the live center with your hand and start tighten. When you can no longer stop the live center from turning – it is tight enough. The foot is now undercut so that the plate will not rock. The small nubbin that remains can be broken off or removed with a chisel.

Thanks to Matt for a great discussion on plate and platter design and demonstration of the techniques.

Editor's note: Matt is an instructor at the [Craft Alliance](http://www.craftalliance.com) and offers courses in turning.

March Pre-Meeting Demo > Rob Conaway – Part 3 of Turning Basics: Chucks / Convex and Concave Facing Cuts●



Rob started his demonstration with a square piece mounted between centers as in previous demonstrations. After roughing it out to a cylinder, he cut a tenon with a square face for registering the chuck jaws so that the piece could be mounted in a chuck for completing facing cuts. Rob had made a jig to let him quickly check the size of the tenon to fit his chuck. The jig is sized to make the tenon such that the jaws are

almost closed for max holding power. (Editor's note: The jig can be designed to size both compression and expansion grips.)



After mounting the piece in the lathe chuck he checked for run out and re-trued the cylinder as needed. Using the A, B, Cs of turning (anchor, bevel, cut) he started his cut and then rolled the gouge over on the face to complete the convex cut using techniques similar to turning a bead. Then using the techniques previously demonstrated for turning coves, concave cuts were made in the face (see Feb 2015 newsletter).



Thanks Rob for introducing the use of the chuck for facing cuts.

(Editor's Note – Special thanks go to Rob for conducting this demonstration. It was his first for the club and we hope to have his participation again in future demos. It takes courage to present before a group but it also is a great learning experience for both club members and the demonstrator. We hope others will come forward to share their knowledge at upcoming meetings.)

Library News > Rich Hinkebein • No new items were added last month. Several of our DVDs have developed problems from fingerprints, dust, dirt, scratches, and other issues. Please handle all DVDs with care and by their edges or center hubs. Let me know of any problems with them that cleaning does not fix.



A reminder to all members: *"If you can't get to a meeting:*

- *You can return that item to the Woodcraft store at your convenience, just put your name and St. Louis Woodturners on the item and the store will get it to me.*
- *You can ask another member to return it.*
- *You can mail it to me or the store.*

Our library is only open on Sunday at our club meetings and is open to all our members for checking out books, videos, and DVD's.

When checking out material:

- Sign and date the card and put it **BEHIND** the letter of your last name in the box.

When you return material:

- Make sure you put the card back in the item and make sure that the card goes with that item.
- Watch that you do not put multiple cards in one item.
- Remember to sign legibly so if something is amiss we can contact the correct person.

Our library is a great source of inspiration and knowledge. A complete listing content is on the club web site. Please take advantage of this wonderful club benefit and return items in a timely manner.

Tech Tips of the Month >

- Too much pressure from the tail stock can flex the foot area of a plate. Use only enough pressure to secure the plate when undercutting the foot. – Matt Keim



- We know that the lathe can be a dangerous tool, but how often do we worry about sharpening our tools. Watch that your sharpening jigs do not contact the grinder wheel. If they do, they can be thrown down with great speed and force. Michael

Blankenship experienced such an event when his Wolverine Vari-grind hit the CBN wheel and slammed down severing his finger. Although it was horrific, Michael is happy to report that the doctors were able to save his finger and after healing he will suffer no lingering effects. – Michael Blankenship



- Plastic tubing makes a great protective end for your turning tools. – Bob Goulding

- A story stick made from nothing more than a strip of wood contains all of a project's critical measurements marked in full-scale proportion. This one was made for laying out the mallets that the Lincoln Land turners are making. Holes were drilled in the stick at the critical points and a ring shanked nail was driven in. When held against the blank, the points quickly and repeatedly lay out the design. – Dan Schmoker





- Cuttings from flexible soles make a good backing for sandpaper to finish coves. – Dan Schmoker

- Beech wood dowels make great shafts for tops. They can be purchased at Rural King (many big box stores do not have Beech wood). The tip of a dowel can also be used to quickly paint dots on a turning. – Ernie Guhl



- Heat shrink tubing can be used to form a custom fit protective end for your tools. – Ron Andracsek

President's Spin > Bob Goulding • We have another great meeting planned for next month. Tom Brock



will be doing the pre-meeting demo on side grain turning with a screw drive, faceplate, waste block and a chuck in the expansion mode. Gary Johnson will do the main meeting demo on segmented bowls. Gary's segmented bowls are sold in galleries in at least 3 states and he has published articles in Fine Woodworking and AAW magazines.

You are aware of our space problem since we were moved into the "wood room". We are looking at the possibility of moving to a different venue and we need your help. We need a location that can accommodate 55 to 60 members at a meeting; room to store our lathe, audio visual equipment, chairs and library cabinets; and access to 220V. If any of you know of such a location please contact me.

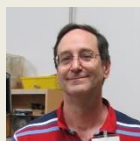
Thanks to Bill Bales who was kind enough to pick up the holly wood from the Missouri Botanical Gardens last month. If any of you that got a piece would be interested in turning an item(s) for sale at the Garden's gift shop, let me know and we'll make the contact. It would also be interesting to display some of the turned items at our meetings so we can give feedback to the Gardens. Let's take maximum advantage of this terrific resource.

Michael Blankenship has offered to participate in a meeting demo on finishing methods. We need others to also discuss their favorite techniques for finishing. Please contact me.

Our club is a chapter of the AAW and I often refer to the AAW for its resources. We encourage all of our members to join the AAW. If you have not joined, be aware that most of the material that I refer to is available to club members in our library. We have purchased most of the AAW DVDs, magazines, and books. Both the AAW and our library are great resources for our members.

Note that our May meeting will be on May 17th due to the regular meeting date being on Memorial weekend.
– Bob Goulding

Club News>



Membership dues are due • Dues for 2015 are payable now. An application is available on the club web site. Dues are \$30 individual; \$40 family. If you are renewing, you don't need to complete a new application just pay your dues to Walt and make sure that the contact information we have on file is correct.

Attendance/Treasurers Report • Approximately 48 members/guests attended the March meeting. - Walt Ahlgrim

Newsletter● Did you know that by hovering your mouse over the “blue” text in the newsletter you can click and be taken to the web site that provides you with more information on the subject? Give it a try if you have not done so in the past. Want to make the text and pictures bigger – just Ctrl + Scroll on your mouse to increase or decrease your screen display.

Community Projects●

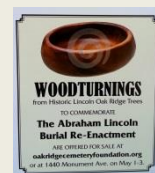
AAW Symposium> The AAW symposium has two programs going that offer a club the opportunity to [ReTurn](#) to the Community – [Empty Bowls](#) and [Beads of Courage](#). Steve Reynold is leading the program for our club. He showed the first Beads of courage box that was submitted by Charles Sapp. See the February newsletter for more information on these community projects. Our goal for the club is to provide at least 10 turned bowls and 15 pens for the Empty Bowl project and 10 lidded boxes for the Beads of Courage. They will then be shipped to the AAW before the symposium June 24-28, 2015. Contact Steve with your turnings for either or both programs. Thanks in advance for your support.



Dixon Springs Stewardship Week> Thanks to all the members that turned and donated tops for the event.



Abraham Lincoln Burial Re-Enactment> The Lincoln Land Turners have been making items from trees that were planted and recently damaged in the [Oak Ridge Cemetery](#) where Lincoln was [buried 150](#) years ago. The sale of items from the woodturnings will help benefit the restoration of the site. Some of the items in the Show and Share section were turned from the oak trees at the cemetery.



Coffee and Cookies● Complementary coffee is available at the meetings. The price for cookies is posted. Purchases are on the honor system.

Sandpaper● Thanks to Dan Burleson for bringing sandpaper for distribution to members at the March meeting. Three large boxes of cut offs were distributed.



Web site● If you have not signed on to the [club web site](#) but want to establish an account send your request to the President, Bob Goulding. Once your membership is verified, he will contact the web master and an account will be established for you with a temporary password. When you sign on for the first time you will be able to set your own password. If you would like to be featured on the home page, provide Jon Spelbring with 4 to 6 good quality pictures (640 x 480) of your turnings with the same background. If you have any problems with web site operation, downloading, or general suggestions please contact the officers.

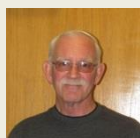
Symposiums and Classes>

● [29th Annual AAW International Symposium](#) June 25-28, 2015 at the David L. Lawrence Convention Center in Pittsburgh, PA. Volunteers are needed for a lot of jobs – packet stuffing, registration, sales, video, Contact Bob Goulding if you are interested or want more information.

- [Ohio Valley Woodturners Guild Symposium](#) - October 9-11, 2015 at the Higher Ground Conference Center. This is a regional symposium held in a rural setting. It has on-site lodge, dorm facilities, RV park and campground as well as national chain hotels close by.



President's Challenge> March open hollow form and tool handle with beads and coves● Rick Madden's open hollow form candle sticks and Dan Schmoker's mallet were selected by the members as the winners of the March President's Challenges. The other entries in the March President's Challenges are shown in the picture section of the newsletter. Congratulations Rick and Dan.



April President's Challenge ● Turn a yarn bowl. Check the January 2014 newsletter for an example or the [internet](#) for [information](#) on their design. The main feature is a cut out in the wall to channel the yarn from the ball. Because it is a somewhat challenging project, the winner will receive \$20 in gift certificates from Craft Supply. One entry per member and they must have been turned within the last three months. Please be sure to sign your name to the challenge sheet and to vote during the break! — Bob Goulding



- Videos are a wonderful way to learn more about wood turning. This site will send you a regular notice with new videos and articles: [Woodturning Online](#). You can go to their site and sign up if you are interested.

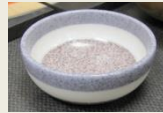
Calendar of Upcoming Events

April 26, 2015	Tom Brock Pre-meeting 11:30am Side grain turning, using a waste block, drive screw, expansion chucking, and faceplates	Gary Johnson will be presenting on segmented bowls. See one of Gary's projects in the Show and Share section of this newsletter.
May 17, 2015	TBD	TBD Note the date change due to Memorial weekend on the regular meeting date.
June 28, 2015	TBD	TBD

March Show and Share



Oak plate from Lincoln cemetery tree turned by John Anderson.



Corian bowl by Michael Blankenship.



Holly bowl and tops with an inlay by John Buehrer.



Dan Burleson beaded vessel. Note that it is beaded on both the inside and the outside.



Natural edge bowl from pin oak by Rich Hinkebein.



Charles Yonk completed his set of candles and candle sticks and a turning of the rare Pineolius Tern.



Bill Farny designed a wall hanging.



Open spiral candlesticks by Dixi Smith.



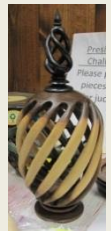
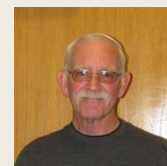
Alan Chin paid tribute to Michael Blankenship (survival of the human spirit) for the bowl that he turned for him from a chunk of cherry.



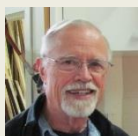
Oak plate with textured and stained rim from the cemetery trees by Tom Brock.



Dessert Ironwood top by Ernie Guhl.



Hollow form vessel and finial by Rick Madden. Rick has his process for making spirals posted on [Saw Mill Creek](#).



Bacote and maple segmented vessel with two openings by Gary Johnson. (Gary will be doing the April demo.)



Unknown artist.



Kwanzan Cherry bowl by John Moore.

Additional Entries for the March President's Challenges – Open Hollow Form



What looks like artistic stair steps is actually a candle stick that fractured when Steve Nagy was hollowing it out.



Maple bowl with open double spiral that was carved into a woven pattern, textured and wood burned to resemble branches by Charles Sapp.

Beaded Handles



Tool handle by Steve Nagy.



Unknown artist.



Tool handle by Charles Sapp.

Facebook site • Check out the club Facebook page:

<https://www.facebook.com/pages/Woodturners-of-St-Louis/292734664135601> and “Like” the page (click on the “Like” icon) to receive updates.



If you enjoy turning wood, making things on your lathe or want to learn more about woodturning then join the Woodturners of St. Louis. Learn and share ideas with like-minded Woodturners of St. Louis. Our chapter normally meets from 1:00pm to 4:00 pm on the fourth Sunday of every month at Woodcraft Supply; 2077 Congressional Drive (Westport area), St. Louis, MO 63146. <http://www.stlturners.org>

American Association of Woodturners • WTSTL is proud to be one of 350+ worldwide chapters of the American Association of Woodturners. We encourage you to join this fine organization. The AAW is dedicated to providing education, information, and organization to those interested in woodturning. You can join the AAW at their site: <http://woodturner.org/member/MemberLogOn.asp>.

Membership comes with access to on-line training information and includes a subscription to the *American Woodturner* magazine. Our club is a chapter of the AAW and we encourage all club members to join the AAW. They have been publishing a great series of on-line woodturning training articles for members that are worth the price of membership by themselves. They have also indexed all of the past AAW magazine articles so you can search and find help with most any issue you may have or ideas on your next project.

Following along with Matt Keim's comment that size does matter – how about this bowl turner!



Pictures courtesy of the [Woodturner's Wonder](#).

Board Members

President:	Bob Goulding	636.745.2333	bobisturner@yahoo.com
Vice President:	Steve Reynolds	636.938.5366	stephen-reynolds@sbcglobal.net
Secretary:	Charles Sapp	636.928.0149	cwsapp@charter.net
Treasurer:	Walt Ahlgrim	314.567.5268	stlwoodturner@sbcglobal.net
Conf. Admin.	James Payne		jpayne.2011@gmail.com
Newsletter:	Charles Sapp	636.928.0149	cwsapp@charter.net
Librarian:	Rich Hinkebein	636.332.2396	kathryna1945@yahoo.com
Questions:	info@stlturners.org		