



# WOODTURNERS OF ST. LOUIS

A Chapter of the American Association of Woodturners

stlturners.org  
October 2015

## October Meeting Demo > Threading and Turning Pendants • Rick Madden



Rick feels that threading his boxes and hollow forms shows an extra effort in craftsmanship. There are also other projects such as urns where a threaded fitting provides a secure yet removable closure.



[Thread chasers](#) are one way to cut threads. PVC can be used for practicing and getting down the rhythm before working with expensive exotic woods.



However, thread chasers do not work well with “softer” native woods such as cherry and walnut. Rick searched on-line for another approach and found a jig designed by Dick Mahaney in California. Dick was



very sharing and Rick soon constructed one. Parts needed: cross slide vise, threaded rod and nuts, adapter to fit chuck to threaded rod, square tubing sized to vise and lathe, 60 degree double bevel cutter,



drill chuck with draw bar, and miscellaneous nuts and bolts to secure the jig to your lathe. (Members can access more detail on the club web site.)

The process starts with the female piece or lid for a box mounted in the chuck. A relief cut and chamfer are made. The chuck is then removed from the headstock and attached to the cutting jig with the piece still in the chuck. It is very important that the jig is parallel with the lathe bed or the lid will wobble when attached. A drill chuck is mounted in the headstock with a 60 degree double bevel cutter. A drawbar is an absolute requirement so the drill chuck does not come loose. The threads are then cut. The male piece is about 1/8 to 5/32” larger than the female. A relief cut and chamfer are made, then the threads are cut and test fit. Typically two passes are sufficient to get a good thread profile. If the male piece is too big, it is put back on the lathe and reduced by sanding or scraping. It is then re-threaded and the process repeated as necessary. CA is applied to stiffen the wood and a wax applied to the finished threads.

Rick shared some of his samples for learning – too wide a relief cut results in too many revolutions to close the vessel; long pieces magnify run out. Inserts can also be made. They can be of different woods and even PVC.



While searching the internet for inspiration, Rick came across pendants made by Dan Douthart of the [Gwinnet Woodworkers Association](#). Following Dan’s idea, Rick made two wood jigs that are [tapped](#) and screwed directly to the headstock spindle. One has a flat face for attaching the blank to turn the face. The second is similar, but has a concave shape to match the shape turned on the face of the pendant and allows finishing of the

back side. Double sided tape is used to attach the blank to the jigs. A profile tool is used to check the contour of the pendant and jig so that a good fit is made on the concave jig.



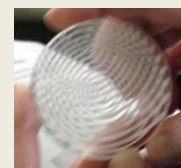
Pendants start with a blank about 2"x2"x1/4". Many woods can be used. [Spectraply](#) is dyed plywood that will give a variety of patterns depending on how the wood is sliced. Differences between face, side, and end grain also provide variety. Plexiglas and acrylics can also be used.



Rick then advanced to turning off center designs on pendants. Commercial jigs typically sell for \$85 so he searched the internet and found a jig made by David Mueller ([www.aggieturner.com](http://www.aggieturner.com)). The web site does not provide instructions for making the jig but David was very sharing with Rick in building one.



Rick built two off center jigs - one with a flat face for the initial turning and one with a concave face for finishing the back side. This also allows him to make cuts on both sides to create a "lattice design".



Out of respect for David Mueller and the intellectual properties associated, details of the off-center fixture for turning pendants are not included in the newsletter. The handout that was given to members at the meeting is available on the club web site under the "[members only tab](#)".

Thanks Rick for a great demonstration.

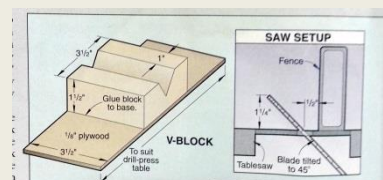
## October Pre-Meeting Demo > Turning Open Center Ornament • Charles Yonk

An ornament is a great exchange gift and adds a festive touch to your tree. Charles turned an open center design based on one created by Ken Schaefer (former WTSTL member). He started with a blank 2x2x4" with a 3/8" hole drilled into both ends for mounting the finials.



FOUR-HOLE ORNAMENT	
CYLINDER DIA.	HOLE DIA.
1 3/4"	7/8"
1 7/8"	1"
2"	1 1/8"
2 1/4"	1 1/4"
2 1/2"	1 1/2"
2 3/4"	1 5/8"
THREE-HOLE ORNAMENT	
CYLINDER DIA.	HOLE DIA.
1 1/4"	1"
1 3/4"	1 1/4"
2"	1 3/8"
2 1/4"	1 1/2"
2 1/2"	1 5/8"
2 3/4"	2"

The block is turned to a cylinder with a tenon on one end for mounting in a chuck. The sides are kept straight and true. Three holes are then bored into the blank to form the windows and the cavity in the ornament body. The recommended hole diameter is shown on the chart. Lines are drawn on the blank at 120 degrees apart for 3 holes. An indexing wheel or the plan for an indexing jig may be used. A photocopy of the illustration can be attached to 1/2" plywood with a dowel that fits the holes drilled into the block to mark the angles. The arrows are aligned with the bottom of



the "V" and the cylinder rotated to each position. A V-block must be used for safety and accuracy to hold the cylinder while drilling. Bore a little more than half way into the blank for each hole. (A larger copy of the table, index illustration, and V-block is available on [member demonstration](#) page on the club web site. See the [October 2014 Newsletter](#) for a tech tip on how to securely hold a cylinder in a V-block for drilling.)



The drilled cylinder is then mounted in the chuck and the tail stock brought up for support. Starting at the middle of the bored out section, roll down and in toward each end to create a spherical form. A tenon can be left at the tail stock end for initial support and then removed. The phantom image of the holes can be used as a guide toward the right shape. Because of the open air "cutting", lathe speed should be 1100-1500 rpm and care must be taken not to shove the tool into an opening and breaking a rib. Initial sanding can be done on the lathe and the ornament is then parted off.





Finials for the top and bottom are then turned. Charlie uses an open end wrench the same size as the drilled hole to size the finial tenons.

Thanks Charlie for a great demonstration.



## Library News > Rich Hinkebein • New items this month:



- American Woodturner magazine – Good articles plus references to some of their on-line information. The [AAW](http://www.aaawoodturners.org) has a searchable master index and past issues on their website. The AAW site also has teaching guides, short videos, hints, and tips for AAW members. It is a great resource for ideas and help and our members are encouraged to join.
- The web site: [www.Woodturnerscatalog.com](http://www.Woodturnerscatalog.com) has free on-line videos. There are two with Alan Batty, “The Skew Chisel” and “Hand Thread Chasing”. Go to product videos, then instructional videos. You can also find previews of many of the DVDs that we have in our library.

Several of our DVDs have developed problems from fingerprints, dust, dirt, scratches, and other issues. Please handle all DVDs with care and by their edges or center hubs. Let me know of any problems with them that cleaning does not fix.

Our library is only open on Sunday at our club meetings and is open to all our paid members for checking out books, videos, and DVD's.

When checking out material:

- Sign and date the card and put it **BEHIND** the letter of your last name in the box.

When you return material:

- Make sure you put the card back in the item and make sure that the card goes with that item.
- Watch that you do not put multiple cards in one item.
- Remember to sign legibly so if something is amiss we can contact the correct person.

A reminder to all members: *“If you can't get to a meeting:*

- *You can ask another member to return it.*
- *You can mail it to me.*

Our library is a great source of inspiration and knowledge. Please take advantage of this wonderful club benefit and return items in a timely manner. A complete listing of material available in the library is on the club web site. Please let me know if you have any suggestions to improve our library. – Rich Hinkebein

## Tech Tips of the Month >

• Use CA on the bristles next to the ferrule on your glue and finishing brushes to eliminate the aggravation of bristles coming loose and getting on your work – Bob Goulding

• A head lamp can provide that extra light needed to see inside your hollow form turnings. LEDs run for many hours on a couple of AA or AAA batteries. – Bob Goulding







**President's Spin > Bob Goulding •** Welcome to our new members and visitors. For our new members and those that want a refresher, be sure to attend our pre-meeting demonstrations. They start at 11:30am and run to about 12:30pm. Our pre-meetings cover basic turning instructions and are open to everyone.

To help your club officers plan meetings to best serve your needs we are distributing a survey. Everyone who fills it out and turns it in will receive a raffle ticket for a \$25 Rockler gift certificate and 2 - \$10 Craft Supply gift certificates at the November meeting. We had 48 completed at the October meeting and hope those of you who have not filled one out will do so. The survey is available on the club web site under the [Members Demonstrations](#) tab and may be downloaded and printed. You can either email/mail it back to Charlie Sapp or bring it to the November meeting. Copies will also be available at the November meeting. Thanks for participating.

Our next meeting on Nov 22<sup>nd</sup> will be our annual Holiday Wine and Cheese party and officer election. Please bring the beverage of your choice and a snack to share. It is traditional, but not required, to eat and drink from turned wooden utensils. Spouses/partners/significant others are, as always, welcome.

The President's Challenge for next month will be to turn a Christmas tree ornament. We hope that you will then enter it into the Ornament Exchange with other members. After the prizes for the selected ornaments, we will have a blind drawing for ornaments among those who have brought them. Please be aware that we all cherish the simple ornaments turned by new turners as much as the more elaborate ones from more experienced turners. Thanks to Charlie Yonk for his pre-meeting demonstration on hollow ornaments to get us inspired. More information can be found in our library or on YouTube.

Our sponsors are important to our club. When you see members of the Carpenter's Training Center staff, be sure to tell them how much we appreciate their hosting us. Rockler and U Pick Hardwoods have also provided us with nice gifts and discounts so please thank them also. Our other sponsors that offer a discount to members are listed on the club web site. Be sure to tell them "thanks" when you shop with them.

I have purchased yoyo strings and have copies of the instructions on how to install and tune them. See me if you are interested.

Thanks to Jeff and Paula Becker for offering to handle the organization of our booth at the [Woodworker's Show in Collinsville on Feb 5<sup>th</sup> to the 7<sup>th</sup> 2016](#). Last year we had an active booth with 20 members manning it over the weekend. Thanks also to Jon and Laura Spelbring for providing a mini lathe for the booth. Now we need your help. Send [Jeff Becker](#) an email or call him if you will take a two hour (or more) shift and for more details. Everyone who works the booth gets into the show free.

The Show Me turning club in Festus will be going in with us to purchase a large quantity of Anchor end sealer. (Used for sealing the cut ends of green wood to reduce cracking.) Details are being worked out and we will pass them along to you at an upcoming meeting.

Thanks to all of you that help with the set up and tear down for each of the meetings. It is really appreciated. It takes a lot of effort to set up the chairs, tables, lathe, and audio/video for each meeting.

Hope to see you in November at the holiday party meeting. – Bob Goulding



**Mentoring Program >** We have 8 mentors signed up and would like more. The program will function through a Mentoring Coordinator, Bob Greenwood. If you would like to have a mentor or be a mentor, contact Bob and he will match you up with a member near you that has experience in your needed area.



## Club News>



**Membership●** Dues for 2016 are payable now. An application is available on the club web site. Dues are \$30 individual; \$40 family. If you are renewing, you don't need to complete a new application just pay your dues to Walt and make sure that the contact information we have on file is correct.

**Attendance/Treasurers Report●** Approximately 60 members/guests attended the October meeting. We have ~\$3100 in the treasury - Walt Ahlgrim

**Community Projects● Beads of Courage>** This will be an on-going community program for our club. You can hold on to your boxes or bring them to the meeting and Steve Reynolds will store them until our next presentation to Children's Hospital in 2016. Smaller boxes (~4" deep x 3" diameter) or larger boxes (~4" deep x 6" diameter) with loose fitting lids and a knob are needed. They will become keepsakes for kids undergoing cancer and heart treatments that use them to store their Beads of Courage as witnessed to us by Ken Magill and Rick Madden at the meeting. Wooden beads are also requested and will be used for special rewards. (See the May NL for tips on how to turn beads by Dave Ackmann.) The club has the BOC logo beads available (\$1.25 each) whenever you need more - contact me or Bob Goulding for the beads. Thank you again. — Steve Reynolds



**November Ornament Exchange●** At the November meeting members will have the opportunity to exchange ornaments that they have made. If you would like to participate, just bring one of your ornaments to the November meeting. The ornament can be simple or complex. Participants will then draw a number to pick an ornament made by another club member. Hope to have your ornament in the event. Ornaments can also be entered into the President's Challenge!



**November Wine & Cheese Social●** There will not be a demonstration at the November meeting. Instead we will have a few hours of socializing. Bring your spouse/significant other, favorite wine (or other drink you enjoy) and an appetizer to share. The social will start following a short business meeting. We will be meeting in the break room just across the hall from our regular meeting room.



**November Election of Board Members●** The annual election will be held at the November meeting. The positions of President, Vice President, Secretary, and Treasurer will be up for election. If you are interested in serving the club as a Board Member, please contact Bob Goulding. Nominations will be accepted from the floor at the November meeting.

**>New members●** Please join me in welcoming new members - Don Eskridge, Alex Nadler, John Hoeing, and Moisy Shopper.



**Coffee and Cookies●** Complementary coffee is available at the meetings. The price for cookies is posted. Purchases are on the honor system.

**Web site●** If you have not signed on to the [club web site](#) but want to establish an account send your request to the President, Bob Goulding. Once your membership is verified, he will contact the web master and an account will be established for you with a temporary password. When you sign on for the first time you will be able to set your own password. If you would like to be featured on the home page, provide Jon Spelbring with 4 to 6 good quality pictures (640 x 480) of your turnings with the same background. You can also establish your own gallery! If you have any problems with web site operation, downloading, or general suggestions please contact the officers.

**Newsletter●** Did you know that by hovering your mouse over the “blue” text in the newsletter you can click and be taken to the web site that provides you with more information on the subject? Give it a try if you have not done so in the past. Want to make the text and pictures bigger – just Ctrl + Scroll on your mouse to increase or decrease your screen display.

**President’s Challenge> October Turn a Mushroom●** Charles Sapp was the winner of the President’s Challenge with his morel mushroom. Congratulations Charlie.



**November President’s Challenge ●** Turn an ornament . Prizes will be given for the ornament selected by the members. If they want, members can then enter their ornament into the exchange.

## Calendar of Upcoming Events

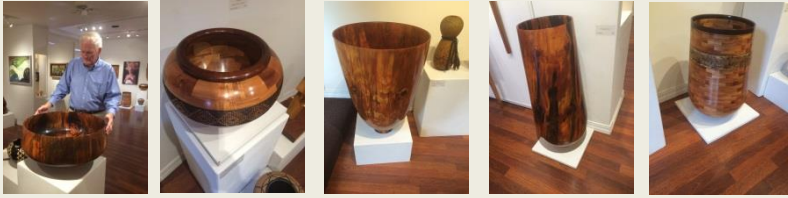
Date	Pre-Meeting 11:30am-12:30pm Demonstration	Meeting Demonstration
November 22, 2015	No pre-meeting.	Holiday party and Election of Officers
December 2015	No pre-meeting.	No meeting.
January 24, 2016		Dave Endres – turning a ladle
February 28, 2016		Cecil Robertson - duplicator

**[More Woodturning Magazine●](#)** This is a monthly online magazine for turners that is published 12 times each year for \$25. In return for providing this information and a link to their site, they provide an article and a list of turning events around the country for the club each month. The article can be accessed via the “[members only](#)” tab on the club web site. Let me know if you like this feature and if we should continue it. The article this month is on finishing pens.

**Symposiums** ● [Tennessee Association of Woodturners](#) Jan 29-30, 2016 in Franklin, TN

Great reports on the Ohio Symposium from 5 members of the Springfield club that attended.

**Miscellaneous** ● John Bouchillon was very impressed by the wood turners in Maui on his recent trip.



Dan Burleson went into production of boxes for his fall shows. He makes them from hard maple, textures the inside top and bottom then airbrushes with dyes. He uses the [EZ Threading Jig Pro from Chefware Kits](#). Click this [link](#) to see his October projects.



**Facebook site** ● Check out the club Facebook page:

<https://www.facebook.com/pages/Woodturners-of-St-Louis/292734664135601> and “Like” the page (click on the “Like” icon) to receive updates.



If you enjoy turning wood, making things on your lathe or want to learn more about woodturning then join the Woodturners of St. Louis. Learn and share ideas with like-minded Woodturners of St. Louis. Our chapter normally meets from 1:00pm to 4:00 pm on the fourth Sunday of every month at 8300 Valcore Avenue, St. Louis, MO <http://www.stlturners.org>

**Craft Supplies USA Gift Certificates** ● If you have won some certificates this year, check the expiration date as some expire on Dec 31, 2015.

**American Association of Woodturners** ● WTSTL is proud to be one of 350+ worldwide chapters of the American Association of Woodturners. We encourage you to join this fine organization. The AAW is dedicated to providing education, information, and organization to those interested in woodturning. You can join the AAW at their site: <http://woodturner.org/member/MemberLogOn.asp>.

Membership comes with access to on-line training information and includes a subscription to the *American Woodturner* magazine. Our club is a chapter of the AAW and we encourage all club members to join the AAW. They have been publishing a great series of on-line woodturning training articles for members that are worth the price of membership by themselves. They have also indexed all of the past AAW magazine articles so you can search and find help with most any issue you may have or ideas on your next project.



# October Show and Share



Jeff Nasser turned these lidded boxes from Lignum Vitae and Qubacho and used Danish Oil for the finish. Holly was used for the insert.



Todd Erdman, CJAP staff, turned this laminated pepper mill with Celtic knot pattern.



Segmented bowl of cherry, maple, and walnut with a lacquer finish by Alex Nadler.



1800s candle stand from figured maple by Jeff Becker. The legs are attached with sliding dove tails. Fifteen coats of poly were applied for the finish.



Ash bowl with dyed rim finished with lacquer and Velvet oil; maple bowl and figured walnut platter also finished with lacquer and Velvet oil by Tom Brock.



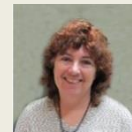
John Hoeing turned a bowl from Mylo. It is from Indonesia, has a cocobolo look at a fraction of the price.



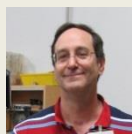
Cherry yarn bowl finished with Velvet oil and buffed with the Beal system by Charles Sapp.



Walnut bottle stopper with Celtic knot by Bob Goulding.



Walnut ring holder accented with colored pencils by Laura Spelbring.



Bed feet by Walt Ahlgrim.



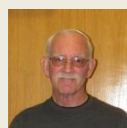
Bird turning from a maple, walnut, and cherry glue up by Steve Reynolds.



Dave Ackman made several fishing jigs using a shrink fit plastic called [JigSkinz](http://JigSkinz.com).



Beads of Courage boxes by Craig Schmidt of the Festus Show Me Club. The yellow one is made from a 2x4 for a President's Challenge and the white one is a cedar glue up.



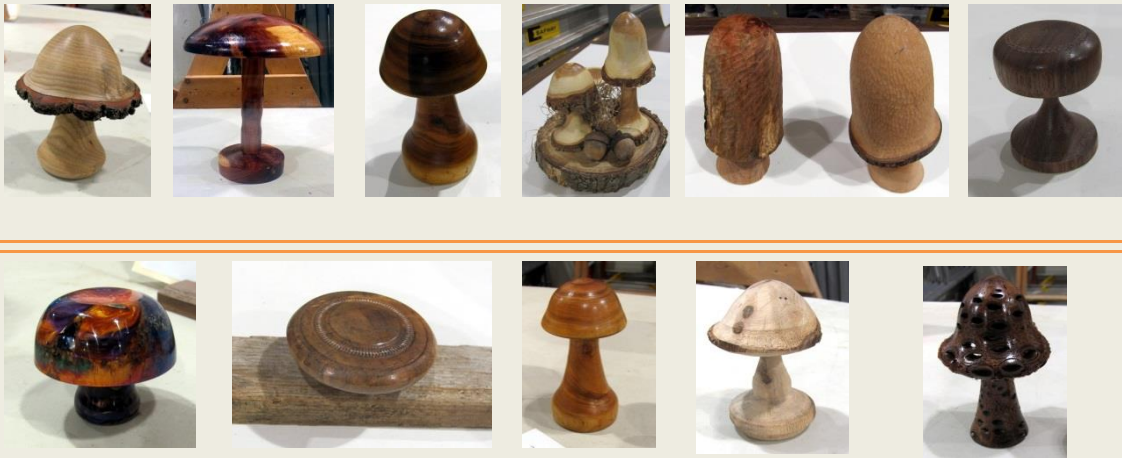
Beads of Courage box from red oak and canary wood by Rick Madden for his grandson who is undergoing treatments for a heart condition. Rick downloaded the patterns, traced, woodburned, and painted them on the box.



Spalted maple platter finished with walnut oil and a maple bowl textured, dyed, gilded and finished with poly by Bill Farny.



## Additional Entries for the October President's Challenges – Turning a Mushroom



I was not able to get the names associated with each of the entries. Be sure to sign the entry sheet when submitting a turning to the President's Challenge.

### Board Members

President:	Bob Goulding	636.745.2333	<a href="mailto:bobisturner@yahoo.com">bobisturner@yahoo.com</a>
Vice President:	Steve Reynolds	636.938.5366	<a href="mailto:stephen-reynolds@sbcglobal.net">stephen-reynolds@sbcglobal.net</a>
Secretary:	Charles Sapp	636.928.0149	<a href="mailto:cwsapp@charter.net">cwsapp@charter.net</a>
Treasurer:	Walt Ahlgrim	314.567.5268	<a href="mailto:stlwoodturner@sbcglobal.net">stlwoodturner@sbcglobal.net</a>
Conf. Admin.	James Payne		<a href="mailto:jpayne.2011@gmail.com">jpayne.2011@gmail.com</a>
Newsletter:	Charles Sapp	636.928.0149	<a href="mailto:cwsapp@charter.net">cwsapp@charter.net</a>
Librarian:	Rich Hinkebein	636.332.2396	<a href="mailto:kathryna1945@yahoo.com">kathryna1945@yahoo.com</a>
Questions:	<a href="mailto:info@stlturners.org">info@stlturners.org</a>		