

WOODTURNERS OF ST. LOUIS

A Chapter of the American Association of Woodturners

stlturners.org
January 2016

Welcome to 2016:

The new year marks a time to renew and rejuvenate things. The Board Members have begun to take on their new roles. With this change comes some tweaks to the room layout, flow of the meeting and other small changes. Please feel free to bring forward suggestions and ideas to further help make the meetings better.



Pre-Meeting Demo: Basics of Woodturning – Roughing Gouge – Bill Farny

We had a great turnout for our hands-on demo. This first one was the basics of woodturning with a roughing gouge. Bill Farny started with the basics about the parts of a lathe, anatomy of wood, setup of wood on the lathe and the ABC's of turning. He then emphasized the meaning of ABC: Anchor, Bevel, Cut. Ancor the tool's flute on the tool rest, ensuring metal to metal contact. Bring the tool's Bevel to the wood, then raise the handle up until the tool starts to Cut.



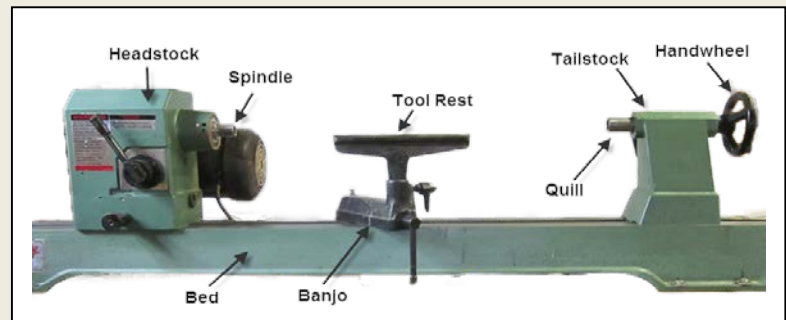
Bill and a few other experienced members of club members then spread out amongst the 4 mini-lathes. Several new and not-so-new turners then began to get some experience on the lathes and expert coaching on turning.

Links for New Turners:

AAW – [Woodturning FUNdamentals](#)

Woodturning Online – [Learning to Turn](#)

Searching YouTube will also yield many videos on the basics of woodturning.



Meeting Demo: Embellishing – Jeff Hornung

Jeff has been turning for about 3.5 years. He was looking for a new hobby when he took a class that turned out to be therapeutic for his headaches. He demonstrated three types of embellishing during the demonstration: Reactive Paints, Texturing and Gilding.

Reactive Metallic Paints:

[Modern Masters Metal Effects](#) has a three step process for creating an ancient metallic appearance or combined with natural wood for stunning affects.

Primer: This is a water-based acrylic paint. It is designed to block the aging solution and activators from reaching the substrate. The work surface needs to be primed with 320 grit and completely dry.

Metallic Paint: This part of the process has real metal particles within the paint. They will tarnish, naturally, over time and when exposed to the elements.

Aging Solution: The Aging Solutions will react and speed up the oxidation process. The chart to the right provides the correct usage of solution for the metallic paint used.



	BLUE	GREEN	RUST
COPPER	✓	✓	
BRONZE	✓	✓	
IRON			✓

Texturing:

[Sorby Texturing Tools](#) were used for the second part of the demonstration, which used specialized woodturning tools to make physical spiraling cuts. This allows the turner to create striations, whorls, an orange peel effect and more. It has interchangeable heads to alter the types of patterns mentioned above. This tool looks like a standard scraper when used. The lathe should be running at 500 rpm for the mini-texturing tool and 1000 rpm or less for the standard texturing tool.



Next a [Nova Texturing Tool](#) was used for a different type of pattern. This tool has a rotary cutter with a diamond pattern for creating patterns on the wood.

A 3-point tool was used to cut dividing lines in-between the different texture types. Jeff made the tool from a 3/8" wood turning tool from Harbor Freight. This tool can be made yourself with the following directions: [3-Point Tool](#).

Jeff's demonstration of the three tools together showed how you can use a combination of the order to make various patterns. He then showed how you can use Scotch Brite Pads to clean-up the texturing. Use the green one first, followed by the gray.

Airbrushing:

Jeff then lead the demonstration into a show of how to do the Nick Agar sunset coloring on a bowl. He used a [Richeson Atomizer](#) to airbrush the paint onto the bowl. The paint ([Artisan Premium Coloring Dye](#)) was applied in three phases; yellow, orange and finally red. Running the lathe at between 200-250 rpm and being about 3-4 inches from the bowl.

Gilding:

Jeff followed the sunset coloring with gilding the edges to finalize the effect. [Baroque Art Gilders Paste](#) was used for the demonstration. Again, this product requires a base coat. Any good acrylic black paint will work. It should be applied with a stiff brush to ensure the paint gets into all of the corners and crevices. Application of the crème is controlled with the pressure used in applying. Using his thumb to take a small amount, then applying to the piece. The same effect can be obtained with a brush. Either method will achieve the desired results, but is up to personal preferences.



Library News > Rich Hinkebein:



New items this month:

- Turning Segmented Wooden Bangles on the Wood Lathe – Don Jovag
- Journal of the American Association of Woodturners – December 2015 vol30, no 6

Our library is only open on Sunday at our club meetings and is open to all our paid members for checking out books, videos, and DVD's.

When checking out material:

- Sign and date the card and put it **BEHIND** the letter of your last name in the box.

When you return material:

- Make sure you put the card back in the item and make sure that the card goes with that item.
- Watch that you do not put multiple cards in one item.
- Remember to sign legibly so if something is amiss we can contact the correct person.

A reminder to all members: *"If you can't get to a meeting"*

- *You can ask another member to return it.*
- *You can mail it to me.*

Our library is a great source of inspiration and knowledge. We typically have around 90 items checked out by members at each meeting. A complete listing content is on the [club web site](#). Please take advantage of this

wonderful club benefit and return items in a timely manner. The large meeting space allows me to spread out the material so you can review and check it out. Please let me know if you have any suggestions to improve our library. All of the magazines have been moved into storage, due to space limitations, with the exception of American Woodturner. Magazines are available upon request. – Rich Hinkebein



President's Spin > Charlie Sapp • Welcome to our new members and visitors. For our new members and those that want a refresher, be sure to attend our pre-meeting demonstrations. They start at 11:30am and run to about 12:30pm. Our pre-meetings cover basic turning instructions and are open to everyone.

Thanks to Bill Farny for leading the January demonstration on how to sharpen and use a roughing gouge and to Gary Hinegardner and the Lincoln Land turners for bringing in the mini lathes. At the February pre-meeting the hands-on instruction will be on using a spindle gouge for cutting beads and coves. Be sure to bring a face shield and your gouge. Wood will be provided. Future sessions will include using a skew and airbrushing.

The member survey you completed last year is invaluable for planning demonstrations and structuring our meetings. It showed strong support for our community programs such as Beads of Courage and more hands-on opportunities with turning days and demonstrator seminars/workshops. These and others are being pursued. Your help is needed to organize these events. Let me know if you would lead or work on a committee to help set up seminars/workshops/turning days.

If you have a nice piece of wood, tool, or other item that would make a good door prize or silent auction item, please bring it in. Sorry that we did not have the airbrush set available for the auction as advertised; it will be available in the near term. A Veritas grinder tool rest will be on the silent auction table at the February meeting.

The Collinsville Woodworking Show February 12-14 will be an opportunity to promote our club. If you know of other events, public forums, community activities, or other venues to show our work and promote the opportunities our club offers, let me know and I would be glad to follow up with them.

By partnering with the Festus Show Me Woodturners we were able to make end sealer available to you for a great price of \$10/gallon. If you purchased a two-gallon jug and want to share a gallon with a member, let me know and we'll make arrangements. If you did not get any end seal and want some, let me know that also and we'll see if purchase of another barrel is feasible. Partnering with local clubs for purchases and demonstrators benefits everyone involved.

Thanks to Jeff Hornung for an informative demo on embellishing your turnings. Following on that idea, the President's Challenge for February is to embellish one of your works with any (or several) of the techniques demonstrated by Jeff. Our February meeting demonstration will be a presentation by Kim Carr on gallery and juried art work – what a non-turner looks for in juried entries, how to best present your work, and how to market your work. Bring some of your "art work turnings" for Show and Tell. And since we did not get to do S&T at the January meeting, please bring any of those items back if you would like to show them to our members.

We have a lot of talent in the club and the sharing of knowledge and instruction from our members is much appreciated. Members indicated a strong interest in inside-out turnings, sharpening systems, lidded boxes, and hollow form vessels. Please contact me to schedule a meeting to share your talents.

Thanks to all of you that help with the set up and tear down for each of the meetings. It is really appreciated. It takes a lot of effort to set up the chairs, tables, lathe, and audio/video for each meeting. I welcome your input, feedback, and look forward to working with you. Please give me a call or email me or the other officers and give us your suggestions on how we can make the club more responsive to your needs. – Charles Sapp

Club News:

Vice President’s Report ●

Beads of Courage:



This year we have 3 goals for Beads of Courage.

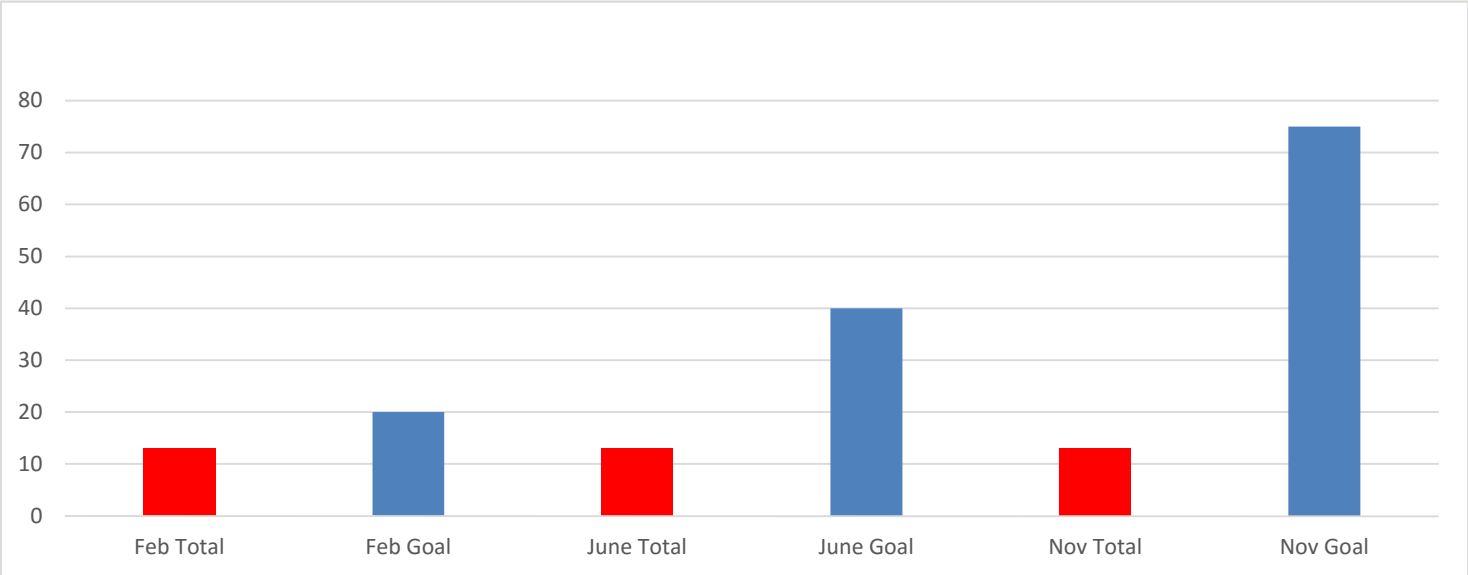
- 1. February 20
- 2. June 40
- 3. November 75



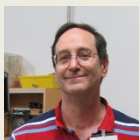
We are off to a great start with 13 completed at the January meeting. Please keep up the great work. This is a perfect way for the club to get our name to more people across the area. Here is a great little quote about what these mean to some kids who need a little helping hand.



“At the 2015 Annual Woodturners picnic, some attendees accepted a sewing challenge. Several wonderful women created exceptional **Beads of Courage** bags for the kids in the program of the same name. Sharon Goulding, Dale Sapp, Jenne Ahlgrim, and Claire Andracsek together made 25 lined bags in which kids will keep their bead collections, gained from each event of injections, operations, chemo treatments, overnight stays, etc. that mark their lengthy journeys to recovery. These bags compliment the many Beads of Courage boxes made by our members earlier in the year. Thanks to all who participated, it’s a great cause!” - Jenne Ahlgrim



– Steve Reynolds



Membership • It is now dues season. An [application](#) is available on the club web site. Dues are \$30 individual; \$40 family. Renewals do not require an application and should be completed before the March meeting. Simply pay your dues to Walt and make sure that the [contact information](#) we have on file is correct.

Attendance/Treasurers Report • Approximately 50 members/guests attended the January meeting. We have paid a few of the yearly bills. - Walt Ahlgrim

New members • Please join me in welcoming

- Paul & Cindy Pinneo of Pevely, MO

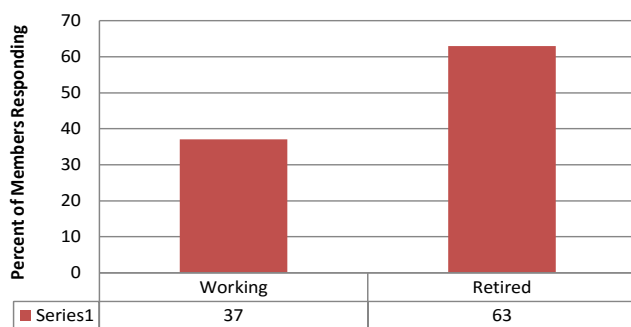
-



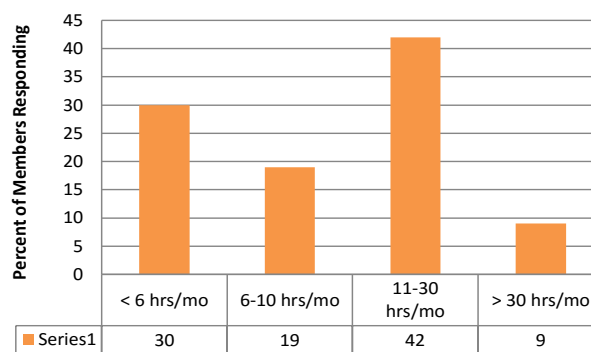
- Renden Hornung of Florissant, MO

Member Survey Results • Charlie reviewed the survey from last year during the meeting.

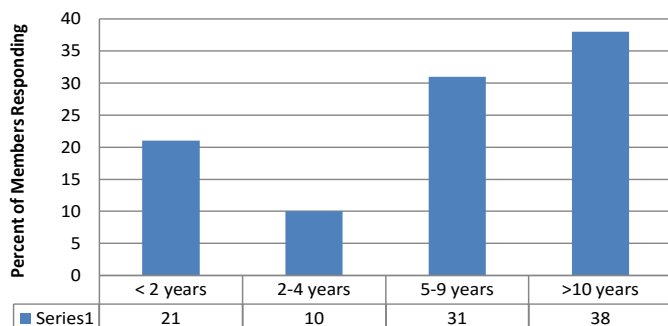
Working or Retired



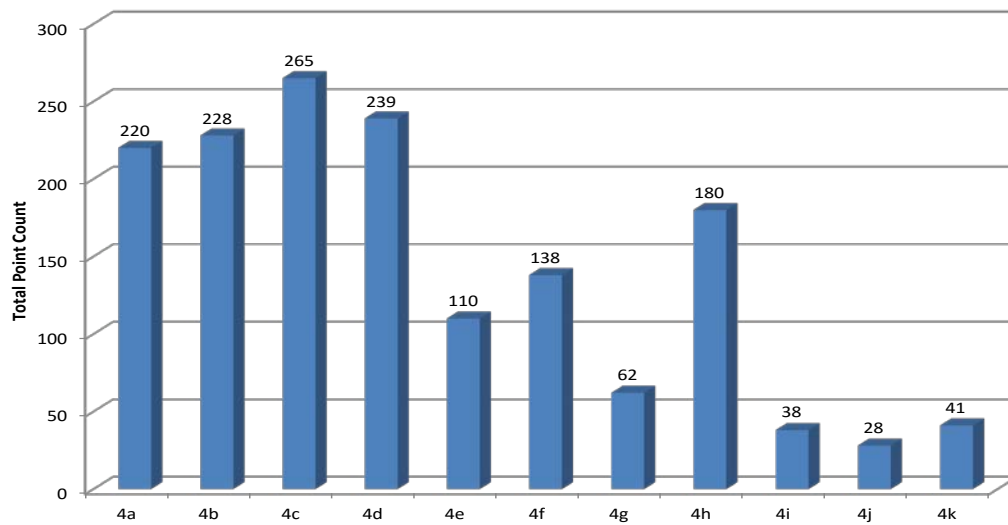
Hours Turning & Finishing / Month



How Long Have You Been Turning



Important Aspects of the Club



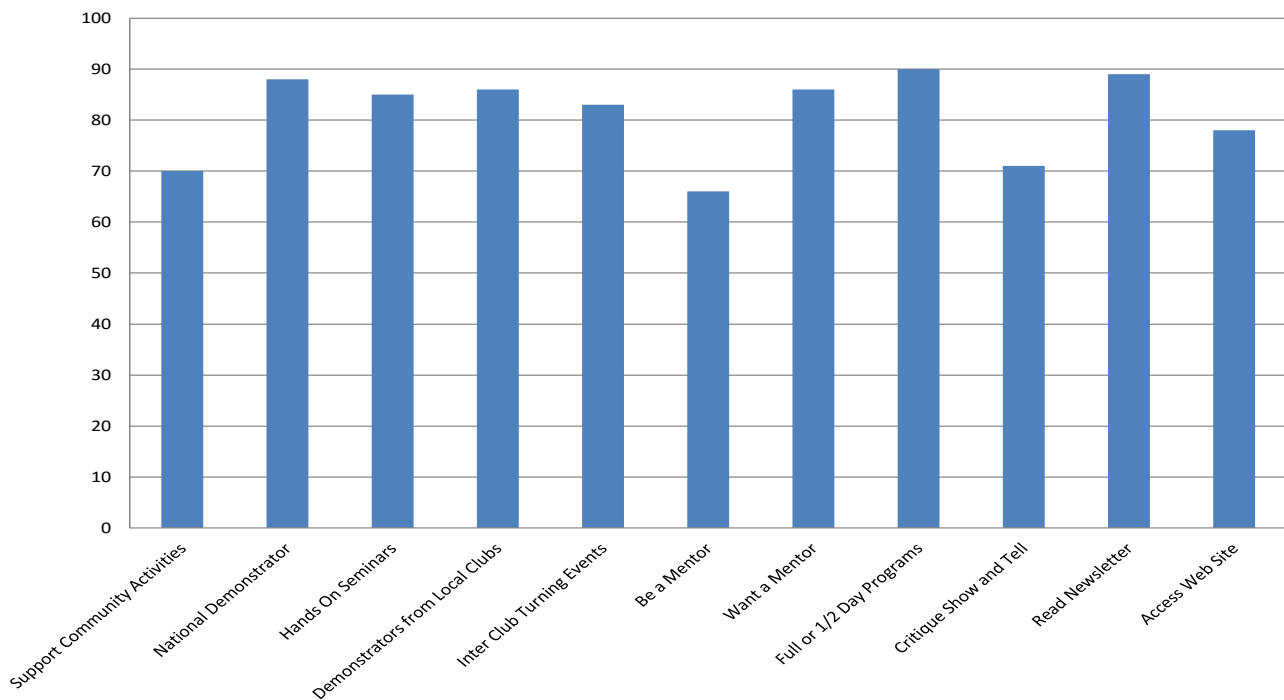
a: Library
b: Pre-meeting demo
c: Meeting demo
d: Interaction w/ members

e: Mentoring
f: Vendor discounts
g: Refreshments
h: Show and Tell

i: Newsletter (from 9 responses)
j: Web site (from 9 responses)
k: President's Challenge (from 9 responses)



Percent of Members Responding in a Positive Manner



Shirts & Patches ●

We have lined up a vendor for the shirts. Please review the links below and select color and size. Please send your selection of style, color, size and quantity to Charlie at: cwsapp@charter.net . Shirts will be ~\$18 each and ~\$21 for sizes 2XL and above, plus applicable tax. Patches are \$3 each. The Club will then coordinate the ordering of shirts and patches following the February meeting.

Without pocket:

[Male style – suggested colors sand or white](#)

[Female style – color white \(sand not available\)](#)

With pocket:

[Male style - color white \(sand not available\)](#)

In Memorandum: Allan Chin ● Allan was a minister serving with the Assemblies of God. He was a shop steward with UAW. Allan had a great passion for his faith, and enjoyed woodworking in his spare time. He was dearly loved, and will be missed by all who knew him.



Festus Club, [Show Me Woodturners](#) Partnership ● We have already seen the beginnings of a great partnership with the Festus club. As mentioned above they assisted with the acquisition of a 55-gallon barrel of End Sealer. This greatly reduces the price per gallon. Dave Ackmann is headed that way to do a demo in the coming months and their club president, Keith Buxton, will be doing a demo of a duck call in March for our club meeting.

Coffee and Cookies● Complementary coffee is available at the meetings. The price for cookies is posted. Purchases are on the honor system.

Web site● If you have not signed on to the [club web site](#) but want to establish an account send your request to the President, Charles Sapp. Once your membership is verified, he will contact the web master and an account will be established for you with a temporary password. When you sign on for the first time you will be able to set your own password. If you would like to be featured on the home page, provide Jon Spelbring with 4 to 6 good quality pictures (640 x 480) of your turnings with the same background. You can also establish your own gallery! If you have any problems with web site operation, downloading, or general suggestions please contact the officers.

Newsletter● The News Letter will be getting some changes over the next few months. All will be subtle and will not make a difference in the content or readability. I would like to offer help to any of the presenters in getting a written outline together. We can setup a call or meet, prior to the meeting. This will help make sure I cover everything you want documented about the demonstration. However, if you already have an outline or write-up of your demonstration, please send it to me prior to the meeting. I would be happy to make some printed copies available for the meeting.

January President’s Challenge: Burn It -

We are trying something new for President’s Challenge voting. You will receive your un-torn ticket when you get your badge or request one prior to the break. During the break review the items on the challenge table. Tear the tickets and write your selection on the back of the one marked “TICKET”. Place in the new President’s Challenge bowl (Thanks to Laura Spelbring!). The tickets will then be used for the door prizes as well. In addition to the winner selected by the members, a gift certificate drawing is also held from all of the President’s Challenge entries when 8 or more entries are submitted.

- 1. Jon Spelbring – Lightening Plate

Entries for the January President’s Challenges

Burn It

Laura Spelbring





Charles Sapp





Jon Spelbring





1st Place

Dick Maes





Steve Nagy





Dan Hill

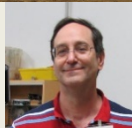




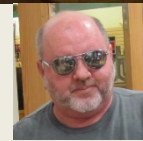
Calendar of Upcoming Events

Date	Pre-Meeting 11:30 am – 12:30 pm	Meeting 1:00 pm – 4:00 pm
February 12-14, 2016	Collinsville Woodworking Show http://www.thewoodworkingshows.com/webapp-shows/st-louis	Booth Schedule
February 28, 2016	Demo and hands-on turning with the use of a spindle gouge to turn beads and coves. Bill Farny and Gary Hinegardner will be leading the demonstration. Everyone is welcome to attend. Bring your face shield and tool if you would like to do the hands on. – Contact Charlie Sapp	Meeting presentation by Kim Carr. She is an accomplished artist and will discuss gallery and juried art work. Then how to use social media to promote your work
March 20, 2016 <u>Note the change in the meeting date due to the conflict with Easter!</u>	Demo and hands on turning. Subject TBD. Demonstration leader and a couple of assistants needed – Contact Charlie Sapp	Meeting demonstration on turning a duck call with Keith Buxton from the Festus Show Me Woodturners .

January Show and Share



Walter Ahlgrim – Black Oak Yarn Bowl



Michael Blankenship – Cherry Segmented Vase
Finished with Polyurethane



Charles Yonk – Cherry Lidded Bowl
Finished with Velvet Oil



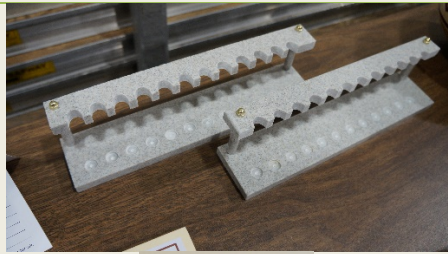
Charles Yonk – Cherry Jam Chuck Dipper
Finished with Velvet Oil



Charles Yonk – Duck Call



Jon Spelbring – Maple and Osage Lightning Wands
Finished with Lacquer



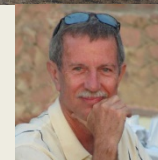
Dave Ackmann – Corian Display Racks



Alex Naddler – Oak, Purple Heart, Walnut & Maple Segmented Bowl



Steve Nagy – Rose, Walnut & Maple Segmented Bowls
Finished with Beahl
First Segmented Turning



Charles Sapp – Pen Blank with Aluminum
Link for this technique:

<https://search.yahoo.com/yhs/search?p=pen+turning+aluminum+can+in+blank&ei=UTF-8&hspart=mozilla&hsimp=yhs-003>



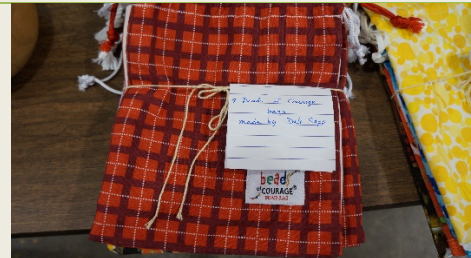
Jason Hill – Resin Shaving Brushes and Box Elder Pen & Bowl
Pen and Bowl finished with CA
First Turned Bowl



Beads of Courage Lidded Boxes
Rich Hinkebein – 1
Bruce Lattimore – 2
Rick Madden – 2
Charles Sapp – 3
Mike Vogt – 1
Jim Schneider – 2
Steve Reynolds – 2



Claire Andracsek – 5 Beads of Courage Bags



Dale Sapp – 8 Beads of Courage Bags

Facebook site • Check out the club Facebook page:

<https://www.facebook.com/pages/Woodturners-of-St-Louis/292734664135601> and “Like” the page (click on the “Like” icon) to receive updates.



If you enjoy turning wood, making things on your lathe or want to learn more about woodturning then join the Woodturners of St. Louis. Learn and share ideas with like-minded Woodturners of St. Louis. Our chapter normally meets from 1:00pm to 4:00 pm on the fourth Sunday of every month at 8300 Valcore Avenue, St. Louis, MO <http://www.stlturners.org>

American Association of Woodturners • WTSTL is proud to be one of 350+ worldwide chapters of the American Association of Woodturners. We encourage you to join this fine organization. The AAW is dedicated to providing education, information, and organization to those interested in woodturning. You can join the AAW at their site: <http://woodturner.org/member/MemberLogOn.asp>.

Membership comes with access to on-line training information and includes a subscription to the *American Woodturner* magazine. Our club is a chapter of the AAW and we encourage all club members to join the AAW. They have been publishing a great series of on-line woodturning training articles for members that are worth the price of membership by themselves. They have also indexed all of the past AAW magazine articles so you can search and find help with most any issue you may have or ideas on your next project.

Board Members

President:	Charles Sapp	636.928.0149	cwsapp@charter.net
Vice President:	Steve Reynolds	636.938.5366	stephen-reynolds@sbcglobal.net
Secretary:	Rob Conaway	314.378.2514	riconaway@yahoo.com
Treasurer:	Walt Ahlgrim	314.567.5268	stlwoodturner@sbcglobal.net
Conf. Admin.	James Payne		ipayne.2011@gmail.com
Newsletter:	Rob Conaway	314.378.2514	riconaway@yahoo.com
Librarian:	Rich Hinkebein	636.332.2396	kathryna1945@yahoo.com
Questions:	info@stlturners.org		