

WOODTURNERS OF ST. LOUIS

A Chapter of the American Association of Woodturners

stlturners.com
August 2018

August Meeting:

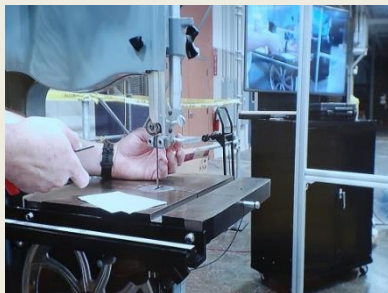
Steve Reynolds started the day with open turning of a rice bowl project. To save time, Steve had roughed out and setup the blanks. Violet and Eric jumped right in to practice and hone their skills. They received guidance from Steve and several of the experienced members. This is a recommended way for anyone to get some practice and guidance on a project. Thank you, Steve!



The demo for the meeting was completed by one of the members with only about 5 years of experience in woodturning, me. I suggested doing a demo on one of the critical tools for a woodturner, the bandsaw. The recommendation came with a caveat, I would be doing the demo. So, it was time to take all the things I do without really thinking and put them on paper. As with

all our demos, a quick couple of items on safety is a good place to start. I then proceed to leave my safety glasses on the top of my hat for most of the demo.

I started with Alex Snodgrass' method for setting up a bandsaw. I have a Delta 14" bandsaw, which I brought for the demo. I purposely set my wheels out of co-planar and unset all but the guides under the table. I



stepped thought each of the setup items to ensure the rest of the demo would go smoothly. Once complete I started with a few tips/tricks I have learned from some of the more experienced members of the club and, of course, YouTube.

These included using a hot glue gun and stabilizing blocks for odd shaped pieces. It is imperative to always maintain control on the piece. I then walked through several of the items I use to cut blanks. I have a center finder, a circle jig, card stock circles in 1/2" increments and pencils or chalk for marking. Please see the links below for more information.

[Bandsaw Basics](#)

[The Wood Whisperer – The Best Way to Setup a Bandsaw](#)



Library News • Our library is only open on Sunday at our club meetings and is open to all our paid members for checking out books, videos, and DVD's. The following are new items:

DVD of Paul Krautmann – Turning a green wood bowl
 DVD of Paul Krautmann – Spindle turning and duplication
 DVD of Oman, Hoeing, Goulding – Turning a Beads of Courage Box
 Book – Multi Axis Turning by Barbara Dill
 Magazine – American Woodturner
 Magazine – Woodturning Issue 320, August 2018 (first issue of a 2-year subscription)
 Several items have been or are in the process of being replaced.

Our library is a great source of inspiration and knowledge. We typically have around 90 items checked out by members at each meeting. A complete listing content is on the [club web site](#). Please take advantage of this wonderful club benefit and return items in a timely manner. The large meeting space allows me to spread out the material so you can review and check it out. Please let me know if you have any suggestions to improve our library. All of the magazines have been moved into storage, due to space limitations, with the exception of American Woodturner. Magazines are available upon request. – **Rich Hinkebein**



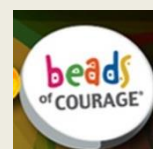
President's Spin • Fall already! Though not technically Autumn until our picnic September 23rd, the rains from that tropical storm last weekend have cooled down the air in St. Louis and the surrounding area. Many of my friends are inspired by the change of season, when the leaves begin to turn and tree identification becomes a game of sorts. The cooler temperatures never fail to remind us of the beginning of the school years from our childhoods, and the drives to college, and even the transport of our children to college (for us older empty nester-types). The season is just loaded with memories.

The cooler season also brings out the garage woodturners who had to stay indoors while the sweltering temperatures kept them from turning. This beautiful season marks the first month our club gathers outdoors together with their spouses and families at the annual St. Louis Woodturners' picnic. We all begin the shop chatter in a new venue, and create more autumn memories with great food and fun turning and hopefully wood exchanges! I will always be grateful to Gary Johnson for bringing that nice piece of cocobolo! There is a nice box of well-seasoned pieces I will be bringing this year, and I hope you all find something that inspires a new shape for you.

I've been playing with a few ideas for the president's challenge, you know, the annual one with the silver play? Hopefully, our shop chatter might trigger some other new ideas for creating this one of a kind work of art destined for fame.

See you at the picnic! – **John Hoeing**

Vice President's Report • [Beads of Courage](#): Let's all remember that the Beads of Courage is a program for kids in need. The beads are \$1.25 (13/16" in diameter) and available from Eric at the meetings. Please continue to turn boxes for the program.
 – **Eric Oman**



Treasurer ● An [application](#) for membership is available on the club web site. Renewals do not require an application. Simply pay your dues to Charlie and make sure that the [contact information](#) we have on file on the club web site is correct. Club patches are available from the Treasurer for \$5. – **Charles Sapp**



Club News:

Hidden Image Challenge ● Find this image at another location in the newsletter to qualify for an entry into a drawing for a \$20 Rockler gift card in November. It could be in a photo, article, text,..... Once you locate it, email your name and a description of the location (page/location) to [Charles Sapp](#). Entrants must be a current member of the WTSTL and submissions must be received before the September NL is released. One entry per member per monthly challenge. (Note: you may want to enlarge/zoom on the newsletter to help you find the image as it may be partially concealed. The hidden image is in the newsletter and not in outside links. The pencil hidden image last month was behind Paul Krautmann's ear. Congratulations to those that found the image!



Japanese
Love Symbol

Segmented Symposium ● The Segmented Woodturners are hosting a symposium on Oct 11-14th at Marriott St. Louis West hotel. A team of demonstrators will provide instruction and inspiration on a wide variety of segmenting topics. Our club has committed to supporting the symposium. That means that we have volunteered to provide some equipment (lathes, vacuums, A/V,...) and personnel to help the demonstrators with set up/tear down and audio visuals. **We need your help/commitment** to get the equipment to/from the show; man the cameras and computers for the PowerPoint presentations. Training will be provided. If you commitment for at least 5 sessions you can attend the remaining sessions at no charge. Don't want to work 5 sessions, then sign up for a couple sessions – you will get to be part of the symposium and meet a lot of new turners. Contact [Charles Sapp](#) to sign up. The vendor area will be open to everyone during the show.



ReTurn to the Community: Pens for the Troops ● We are again [turning pens for the troops](#) to show our appreciation to the men and women in the armed services. This is an annual event for Woodcraft and they have donated thousands of pen kits over the years. Woodcraft provides the slim line pen kits, individuals provide the blanks, turn the pens, and return them for distribution around Veteran's Day. The kits are available from Treasurer, Charles Sapp at the meeting (\$3 deposit which is returned to you when you return a completed pen). Pens need to be completed and returned to the Treasurer by the Oct 28th meeting.

St. Charles Old Capitol Pole Lathe Demonstrations ● A demonstration of the pole lathe operation is scheduled for Sept 18th from 1pm – 2pm. This is an opportunity to provide hands-on turning and old tool experiences to both kids and adults. Other demonstrations of historical crafts and activities early settlers would have done will also be participating. We are also going to “upgrade” the pole lathe to a treadle lathe. If you can help with the demonstrations or the design/build of the treadle lathe please contact [Rich Hinkebein](#).

Attendance/Treasurers Report ● There were approximately 35 members/guests attending the August meeting.



International Wood Collectors Society

International Wood Collectors Society • The annual meeting was held at the Embassy Suites hotel in St. Charles on Aug 22nd -26th. In addition to presentations on showing/selling your work, wood pests and diseases there were turning and carving demonstrations and hands on activities. Members displayed their flat work, burnings, carving, and turnings. A wood auction was held at the end of the meeting. For information on the organization check their web site: www.woodcollectors.org.



Mike Short (Show Me Turners) Carvings



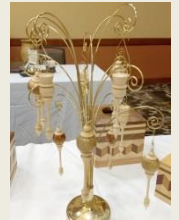
Eric & Violet Oman Cutting Board Demo



Wes Kolkmeier Segmented Vessels



Michael & Jackie Blankenship



Bob Chastain Ornaments



Tim French (Show Me Turners) Display



Bob Dickherber Display



Wood Auction

Annual Picnic • September 23rd is the date for our club picnic. It will be at [Emmenegger Nature Park](http://www.emmenegger.com).

From eastbound I-44, take the Watson Road exit to Geyer Road and turn north. Go 200 yards to Cragwold Road and turn west. Go 1 mile to Stonewood, then South to the area entrance. Pavilion and parking is to the left. Handicap parking is available by going to the right after entering the park and looping around the nature park.



A map to the picnic can be found at: <https://goo.gl/maps/sVuT7psDMwr>. Bring a side dish to share. Plan to arrive around noon and lunch will start around 12:30 pm. The club will be providing paper products, utensils, coffee, buns, and the meat. You are responsible for your drinks if you want something other than coffee. We have a shelter reserved so please come rain or shine!

In addition to the great food, we will have the creative event where everyone can assemble "whatever" from scrap wood pieces using hot glue and imagination; a swap and sell table where you can trade or sell wood, tools, finishes,; and a collaboration turning, by teams of members (and their guests if they want to participate). Bring your tools and safety gear!

WTSTL 25th Anniversary Challenge • The club was organized in 1993 and this is our 25th anniversary. President John Hoeing is challenging everyone to turn an item that incorporates silver (or a silver knock off look like pewter, chrome, aluminum). Pieces will be judged at the October meeting and an article written about the winning piece for submittal to the AAW magazine.



Secretary• Please make sure you are filling in the card for the Show and Share. It helps me when I am translating notes and pictures from the meeting. I would also like to request every President's Challenge entrant give some additional information about their piece. This helps to ensure the most accurate information in the newsletter. I would again like to offer my service to write-up demonstration outlines or documentation. Please call or email if you have any questions. – **Rob Conaway**

In the News •

[AAW Article: Build a Shop-made Chuck for Offset Turnings](#)

[AAW Article: Multi-axis Disk Vase](#)

[AAW Video: Tip on Multi-axis Turning Featuring Barbara Dill](#)

[Barbara Dill Multi-axis spindle turning](#)

[AAW: Tennessee Association of Woodturners - 2019 Woodturning Symposium Jan 25th and 26th, 2019](#)

[AAW Article: Functional Wooden Bowl](#)

[AAW Woodturnings Fundamentals](#)

[AAW Article: A Gallery-Quality Finish](#)

New Members • No New Members

Calendar of Upcoming Events

Date	Pre-Meeting 11:30 am – 12:30 pm	Meeting 1:00 pm – 4:00 pm
September 23, 2018	Picnic at Emmenegger Park	Picnic at Emmenegger Park
October 28, 2018	Open turning	Michael Blankenship – Coring tool demonstration

August President's Challenge • Spindle Work

We will be continuing our voting procedure. During the break, review the items on the challenge table. Tear the tickets and write your selection on the back of the one marked "TICKET". Place in the President's Challenge bowl. In addition to the winner selected by the members, an additional door prize ticket will be given to everyone that provides a President's Challenge entry. If you have a President's Challenge Entry, be sure to look for your name on the door prize winners. The PC tickets are a different color and will have the winner's name written on the ticket. You will not need the matching stub.

Entries for the August President's Challenge Spindle Work



John Hoeing



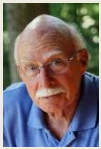
Wayne Iehl
(Co-Winner
August PC)



Charles Sapp



Jeff Nasser



Bob Goulding (Co-
Winner August
PC)



October President's Challenge – 25th Anniversary Challenge (see above article for details)

August Show and Share



Wayne Iehl – Cedar Toy Car Vase finished with lacquer.
Birch and Walnut yarn bowl and finished with lacquer



Ken Bald – Mesquite three-tiered lidded box finished with Watco Oil



Steve Reynolds – Ash vessel and burl bowl



Bob Goulding – Cherry hollow form finished with lacquer. Cherry mortar and pestle finished with mineral oil. Cedar and Manzanita medallions finished with lacquer.



Charles Sapp – Dirty pour string art picture and bowl.
Cutting Board made at IWCS and Ornaments made from the board. Lidded pencil boxes.



Charles Schrock – Senora Palo Verde natural edge bowl finished with polyurethane.



Rick Madden – Maple sphere embellished by a Dremel and finished with Danish oil

Web site● If you have not signed on to the [club web site](#) but want to establish an account send your request to the Treasurer, Charles Sapp. Once your membership is verified, he will contact the web master and an account will be established for you with a temporary password. When you sign on for the first time you will be able to set your own password. If you would like to be featured on the home page, provide Jon Spelbring with 4 to 6 good quality pictures (640 x 480) of your turnings with the same background. You can also establish your own gallery! If you have any problems with web site operation, downloading, or general suggestions please contact the officers.

Coffee and Cookies● Complementary coffee is available at the meetings. A contribution for cookies is appreciated. Purchases are on the honor system.

Facebook Group ● Our club has a Facebook group that is a great way to post pictures of your work, provide tech tips, and share ideas. It is a closed group. When you go to the site: <https://www.facebook.com/groups/1157348070957128/?fref=nf> click on “Join” and your request will be processed by our Facebook administrator.

Facebook site ● Check out the club Facebook page: <https://www.facebook.com/pages/Woodturners-of-St-Louis/292734664135601> and “Like” the page (click on the “Like” icon) to receive updates.



If you enjoy turning wood, making things on your lathe or want to learn more about woodturning then join the Woodturners of St. Louis. Learn and share ideas with like-minded Woodturners of St. Louis. Our chapter normally meets from 1:00pm to 4:00 pm on the fourth Sunday of every month at 8300 Valcour Avenue, St. Louis, MO <http://www.stlturners.com>

American Association of Woodturners • WTSTL is one of 350+ worldwide chapters of the American Association of Woodturners. We encourage you to join this organization. The AAW is dedicated to providing education, information, and organization to those interested in woodturning. You can join the AAW at their site: <http://woodturner.org/member/MemberLogOn.asp>.

Membership comes with access to on-line training information and includes a subscription to the *American Woodturner* magazine. Our club is a chapter of the AAW and we encourage all club members to join the AAW. They have been publishing a great series of on-line woodturning training articles for members that are worth the price of membership by themselves. They have also indexed all of the past AAW magazine articles so you can search and find help with most any issue you have or ideas on your next project.

President:	John Hoeing	314.550.8540	ighoeing@mac.com
Vice President:	Eric Oman	636.248.0069	eric.p.oman@boeing.com
Secretary:	Rob Conaway	314.378.2514	rjconaway@yahoo.com
Treasurer:	Charles Sapp	636.928.0149	cwsapp@charter.net
Newsletter:	Rob Conaway	314.378.2514	rjconaway@yahoo.com
Librarian:	Rich Hinkebein	636.332.2396	kathryna1945@yahoo.com
Questions:	info@stlturners.com		