

# WOODTURNERS OF ST. LOUIS

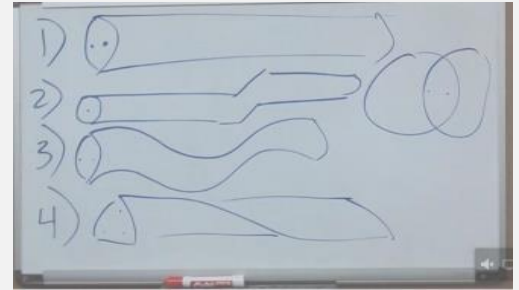
A Chapter of the American Association of Woodturners

stlturners.com

May 2021



**May IRD** • Jason Clark demonstrated the principles of off axis turning and then applied it to turning a twisted box – with a special effect – getting the grain to align between the body and the lid even with the twist!.



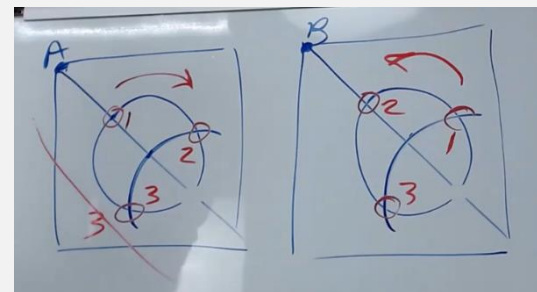
Jason marks a reference line on the corner and then draws a diagonal to the opposite corner on each end of the blank. After finding the center of each end you can take multiple approaches. For off axis turning like examples 1, 2, and 3 in the picture above, two marks are made about 3/8" apart (your choice depending on size and end result) and the piece is turned on two different parallel axes. After making initial cuts, examination of the end will show if more wood needs to come off a

particular axis for "symmetry". Counter to intuition the side with the shortest distance becomes the axis to mount to remove wood from the opposite side. In the case shown, the right hand side needs to have material removed, so the piece is remounted on the left dimple to accomplish the material removal and get symmetry.



Examples 2 and 3 went into turning coves and beads to achieve the shown shapes – still turning on parallel offset axes.

In turning the lidded box with a twist (example 4 above), Jason used the same principles but instead of making two marks on each end he drew a circle and used a compass to establish three off axis points on each end. By switching the numbering by one partial rotation and going clockwise on one end and counter clockwise on the other end he established the twist and defined whether it would be a left hand or right hand twist.



When turning, mount the blank on 1 to 1, then 2 to 2, then 3 to 3. On each axis the material closest to the tool rest is removed in a straight line – from one end to the other. If adjustments in width are needed for any of the sides, the principle used above is applied – mount the piece on the shortest side to remove wood from the other sides and effectively widen the short side.





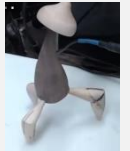
The “secret” to getting the grain to align and having a twist is to turn the INSIDE of the twisted lidded box first then jam chuck them together when turning the twist! A tight fit between the top and bottom is important on both the tenon and the faces so the individual pieces do not rotate while the twist is being turned. The tightness can be adjusted later. Remember the inside is hollow when you are turning the twist. Rule of thumb – the inside hollow diameter should be 50-60% of the outside diameter. After completing the twist, a jam chuck is used to finish turn the top and bottom sections.

The straight cuts used for the demonstration leave the center slightly thicker than the ends. By cutting a cove from end to end different shapes can be achieved as shown.

Jason provided a great demonstration with techniques to achieve twist and grain match for lidded boxes. See more of Jason’s work at [www.Jtcturning.com](http://www.Jtcturning.com).



**Walking Mushroom IRD Video by Rebecca DeGroot:** A video of the demonstration is available to members under the member’s only tab on the web site for a limited time. A detailed description of the process is also available under the member’s only tab on the [club web site](#). .



**WTSTL remote meetings** ● We are in discussion with CJAP about returning to in person meetings. June is TBD; we will let you know as soon as possible. We continue to schedule a robust Interactive Remote Demonstration program for you so that you can participate while we are meeting remotely and face to face when we resume meetings. Thanks for participating in the survey regarding COVID and gathering face to face. Results are available under the member’s only tab on the club web site.

If you have experience in setting up and/or operating audio/visual equipment, please contact one of the officers. We are looking into upgrading our system and getting ready to stream remotely when in person meetings resume.

Members can participate in the IRDs for no charge; there is a \$10 fee for **nonmembers**. Meeting information with the link will be emailed about a week before the meeting. Please sign on to the meeting with your full name for verification against our roster. If you are a non-member and would like to participate in the event, register on the club web site: [www.WTSTL.com](http://www.WTSTL.com).



**President’s Spin ● Just Smile.....**There appears to be a light at the end of the Covid tunnel. And as eager as we all are to return to something that resembles normal some caution is still in order.

Meetings where we get together in person are coming. Restrictions from State and national agencies are easing or even evaporating. But we should be respectful of the various concerns that exist among the members even as we begin the transition to meetings at CJAP. Our collective enthusiasm for seeing our friends and fellow turners is hard to deny. Handshakes are questionable, hugs are out of the question, and crowding together is not a good idea. However there is nothing that prevents us from showing our happiness at seeing each other. Just smile. - **Steve Reynolds**



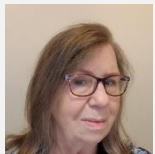
**Vice President's Report • [Beads of Courage:](#)** Let's all remember that the Beads of Courage is a program for kids in need. The beads are \$1.25 (13/16" in diameter) and available from Ken. Please continue to turn boxes for the program. – **Ken Bald**



**Treasurer Report •** The web site has been updated to accept electronic membership applications and payments. If you prefer to complete and mail a paper [application](#), it is available and can be down loaded from the club web site. Renewing and new members are asked to complete the new application form. A link to our



Facebook page has also been added under the sponsors list. Club patches are available from the Treasurer for \$5. – **Charles Sapp**



**Secretary Report • May 23<sup>rd</sup> Remote Meeting:** Officers present at the May 23, 2021 monthly meeting were: Steve Reynolds, President; Ken Bald, VP; Charles Sapp, Treasurer; -and Linda Osterwise, Secretary. Approximately 29 members attended the virtual meeting.

1. Pre-meeting discussions included the possibility of upgrading audio/visual for the club, as well as revisiting researching operating a lathe while sitting due to health reasons. We also discussed turning platters or plates out of green wood, or if the wood must be dry.
2. One new member: Collin Preftakes, a new turner.
3. Upcoming meeting activity
  - a. Prior to the meeting on June 27<sup>th</sup>, Ken Bald will have a truckload of wood from Laura and John Spelbring to hand out to members
  - b. June 27, 2021 meeting – demo by Steve Reynolds – Bowl Embellishments with a router (referencing AAW article in 2020)
4. Community Service Projects that we are doing should be continued – Pens for Service personnel, Bead of Courage Boxes, and Lidded Boxes for nursing homes
5. Discussion regarding returning to CJAP meetings, possibly for the June meeting. A recap of the survey results was discussed. The WTSTL Board will make and announce the decision to start meeting in person at CJAP or continue as virtual only prior to the June meeting. Some of the things to be considered are:
  - a. In person meeting in conjunction with Zoom meeting so that we can reach more members
  - b. Space chairs allowing social distancing
  - c. Require masks
  - d. Take temperatures
  - e. Have members request library items from Rich by email before the meeting and pick them up in the back of the room, as well as returning items borrowed before the pandemic by placing them on a table, instead of opening the entire library for browsing.
  - f. Hold off pre-meeting hands on instructions until a later time
  - g. Asking members not to gather in groups before, during, or after the meeting and maintain social distancing
  - h. Move a monitor midway into the room so that others in the rear may see better.
  - i. Use fans to circulate the air and be more comfortable
  - j. Continue to have people submit pictures of their Show & Tell items to Charlie prior to the meeting so that they can be viewed through Zoom during the meeting.

6. Richard Grossman showed how he turned his lathe into a sanding disk with variable speeds by using a round piece of wood and sanding discs.
7. Show & Tell projects were inspiring and great.
8. Jason Clark's multi-axis turning demo was fun and thorough. He progressively demonstrated how to go from turning a multi-axis tube into turning a "twisted" box. He also showed us how to make it a left-hand twist, vs. a right-hand twist.
9. The meeting was adjourned  
- Linda Osterwise

## **Club News:**

**Dues 2021** • Membership runs from Jan 1 to Dec 31. Dues are \$35 for individual and \$45 for family (up to 3 in the same household) Interactive remote demonstrations (IRD) will continue to be free to our members. Non-members will pay a \$10 fee per demonstration. Once we resume meeting in person, the Board plans to continue Zoom broadcasts of meeting demonstrations.

**New Members:** Please join me in welcoming our new members:

Collin Preftakes from Clayton, MO



Steve White from Webster Groves, MO



**WTSTL Newsletter** • The American Association of Woodturners Communications Committee Judges awarded the *Woodturners of St. Louis Third Place* in the 2021 Best AAW Chapter Newsletter contest. This award will be recognized in the August issue of the American Woodturner journal, and during the online AAW symposium in July.



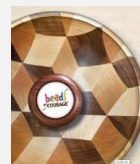
**Community Programs** • Please continue to work on these items but hold on to your turnings until we start meeting in-person. For more information on these programs check the web site.

- **Nursing Home Project:** This community service project for our members is to make small lidded boxes for individuals in nursing homes. Approximate dimension should be 3X3" with loose fitting lids.





- **Beads of Courage** – Our support for the Beads of Courage program continues with boxes going to Children’s Hospital. Check out their [link](#) or talk to Ken Bald for more information.



- **Pens for the Troops** • See Treasurer, Charles Sapp, if you would like to get a pen kit to participate in the program. There is a \$3 deposit for the pen kit that is refunded when the completed pen is returned. In the interim if you want to be turning pens for this program you can use pen kits that you currently have and they will be swapped out for a Slimline pen kit when you turn in a completed pen.



## Positions to Fill •

- **NEWSLETTER EDITOR** – The editor is responsible for collecting articles, editing, and assembling the club newsletter.
- **AV Operator** – The operator is responsible for setup/breakdown of the AV equipment for each meeting. We would like for at least 2 people to fill this role so a backup is available. We do have a mentor to get you trained.

**ZOOM**• The club purchased a Pro Level account with Zoom so that we can host our meetings and other off-meeting events. Provided it does not conflict with any of our club events, the account can be used by members. If you would like to schedule a remote meeting send an email to [webmaster@wtstl.com](mailto:webmaster@wtstl.com). Club events take priority.

**Mentoring**• The Board recognizes the value of hands-on and one-on-one instruction. A new page has been added to the web site (under the member’s only tab so you must log on to the site) with a list of members that offer mentoring to members. It will be one turner at a time; you must provide your project, tools, and face shield; a mask must also be worn. Make arrangements with the mentors to participate. Several of our members have taken advantage of this opportunity and provided very positive feedback on the mentors knowledge and instruction.

**Club Shirts/Smocks**• Our order has been placed on hold as many suppliers are out of stock due to the pandemic and shut downs. You will be notified when we plan to complete the order and at that time you will be able to finalize your order. No pre-payments have been accepted at this point in time.

**Amazon Smile**• Thanks to those that are using Amazon Smile for their orders and selecting Woodturners of Saint Louis as their charity. We are receiving quarterly donations from the Amazon Foundation thanks to them and you. There is no added fee when you make your order and it does help the club.

**Shopping with Amazon Smile** • If you shop on Amazon, please consider shopping on <https://smile.amazon.com>. Just under the search bar is a link to “Supporting”. Follow the links to select your favorite charity. We hope you will select Woodturners of Saint Louis. You will need to shop on the smile site for a donation to count from now on. Click on the AmazonSmile logo to go directly to the WTSTL charity site.



**AAW 2021 Symposium** ● The Symposium in Omaha has been cancelled due to the risk involved with a large number of people assembling. They are moving ahead to create a virtual symposium with demonstrations, trade show, instant gallery, ....

## Calendar of Upcoming Events

Date	Pre-Meeting 12:30 pm – 1:00 pm; logon and socializing	Meeting 1:00 pm – 4:00 pm
June 27, 2021	WTSTL – TBD Zoom or in person	WTSTL – IRD with Steve Reynolds using a router for turning enhancements.

### Video Events ●

- Record Power hosts a weekly free live Zoom woodturning session. If you would like to participate, send an email to [MikeD@recordpower.co.uk](mailto:MikeD@recordpower.co.uk) with RSVP in the subject line. You will receive Zoom information prior to the event.
- [Rockler](#) has a video on Getting Started in Pen Turning that takes one thru the steps. (Then practice by turning a Pen for the Troops.)
- [Kent Weakley](#) has an article on bowl finishing you may find interesting and helpful.
- Use offset turning to [make oval handles](#) for your tools.

### ●Facebook site ● Check out the club Facebook page:

<https://www.facebook.com/pages/Woodturners-of-St-Louis/292734664135601> and “Like” the page (click on the “Like” icon) to receive updates. You can also post your pictures on this site.



### Facebook Group ● Our club has a Facebook group that is a great way to post pictures of your work, provide tech tips, and share ideas. When you go to the site:

<https://www.facebook.com/groups/1157348070957128/?fref=nf> click on “Join” and your request will be processed by our Facebook administrator. It is a closed group and only seen by members.

# May Remote Show and Tell



Turner: Jerry Rymarquis

Wood: Various wood scraps

Finish:

Size:

Comments: Acorn box



Turner: Jerry Rymarquis

Wood: Maple

Finish:

Size: 16" x 8" diameter

Comments: Maple tower box with cherry finial and woodburning





Turner: Charles Sapp



Wood: Box Elder

Finish: Poly

Size: 4" diameter

Comments: Bowl in a bowl inspired by Theo Haralampou's demo



Turner: Charles Sapp



Wood: Ash; Basswood body with Walnut legs

Finish: Cherry stain on legs and lacquer; Alcohol dye and lacquer

Size: 6" high

Comments: Walking mushroom inspired by Rebecca DeGroot's demo







Turner: Wayne lehl

Wood: Oak & Walnut

Finish: Walnut oil

Size: 9" x 3"

Comments: Oak dead-blow mallets with walnut plug



Turner: Wayne lehl

Wood: Red Cedar

Finish: Walnut oil

Size: 9", 9", 8" high

Comments: Holds 5 oz, 8 oz, 16 oz





Turner: Murray Meierhoff

Wood: Spalted silver maple

Finish: Danish Oil

Size: 15"

Comments:



Turner: Murray Meierhoff

Wood: Red oak

Finish: Acrylic polyurethane

Size: 8.5" diameter

Comments:





Turner: Jerry Rymarquis

Wood: Canary, Wenge,  
& Maple

Finish:

Size: 12" diameter

Comments:



Turner: Jerry Rymarquis

Wood: Cherry

Finish:

Size: 16" diameter

Comments: Stone inlay





Richard Grossman – Lathe driven disc sander

**Parts purchased:**

- \* Delta USA cast iron sander table (found on eBay)
- \* 8" Faceplate
- \* 12" Velcro back and 12" hook & loop sanding discs from Klingspor's Woodworking
- \* ¾" plywood for 12" disc and box with dust collection hole



Turner: Murray Meierhoff

Wood: Ash

Finish: Walnut oil

Size: 9" x 5"

Comments: Surprise bowl – branch inclusion





**Show and Tell items are now featured on a slide show on the club web site home page.**

**Check it out!**

**[www.WTSTL.com](http://www.WTSTL.com)**

**Web site●** Updates have been made to the club web site. The new URL is WTSTL.com. To have access to the members only page you must log on. If you have issues or questions, contact the web master. **Items submitted for the Show and Tell are now being displayed on the home page of the web.** Provide Charlie Sapp with good quality pictures (640 x 480) of your turnings for Show and Tell or to establish your own gallery!

If you enjoy turning wood, making things on your lathe or want to learn more about woodturning then join the [Woodturners of St. Louis](http://www.woodturnersofstlouis.com). Learn and share ideas with like-minded Woodturners of St. Louis. Our chapter normally meets from 1:00pm to 4:00 pm on the fourth Sunday of every month at 8300 Valcour Avenue, St. Louis, MO.

**We are currently meeting remotely during the COVID-19 pandemic. We have remote meetings and demonstrations scheduled for the next few months. We will relaunch when we can safely meet face to face and social distancing makes it practical. We hope that you will join us for our remote meetings and in-person in the future.**

**American Association of Woodturners●** WTSTL is one of 350+ worldwide chapters of the American Association of Woodturners. We encourage you to join this organization. The AAW is dedicated to providing education, information, and organization to those interested in woodturning. You can join the AAW at their site: <http://woodturner.org/member/MemberLogOn.asp>.

Membership comes with access to on-line training information and includes a subscription to the *American Woodturner* magazine. Our club is a chapter of the AAW and we encourage all club members to join the AAW. They have been publishing a great series of on-line woodturning training articles for members that are worth the price of membership by themselves. They have also indexed all of the past AAW magazine articles so you can search and find help with most any issue you have or ideas on your next project.

President:	Steve Reynolds	314.420.9781	<a href="mailto:stephen-reynolds@sbcglobal.net">stephen-reynolds@sbcglobal.net</a>
Vice President:	Ken Bald	618.407.1636	<a href="mailto:KenBald@sbcglobal.net">KenBald@sbcglobal.net</a>
Secretary:	Linda Osterwise	314.630.0133	<a href="mailto:osterwik@gmail.com">osterwik@gmail.com</a>
Treasurer:	Charles Sapp	636.928.0149	<a href="mailto:cwsapp@charter.net">cwsapp@charter.net</a>
Newsletter:	Charles Sapp	636.928.0149	<a href="mailto:cwsapp@charter.net">cwsapp@charter.net</a>
Librarian:	Rich Hinkebein	636.332.2396	<a href="mailto:kathryna1945@yahoo.com">kathryna1945@yahoo.com</a>

Questions: [webmaster@wtstl.com](mailto:webmaster@wtstl.com)