

WOODTURNERS OF ST. LOUIS

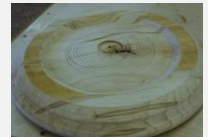
A Chapter of the American Association of Woodturners

WTSTL.com
August 2021



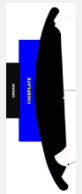
August Demonstration • Charles Sapp – Off Center Tilted Platter This process was taught by John Keenan at JC Campbell in 2019 when I attended the folk school. Thanks to John for allowing me to share his pictures and techniques.

1. Prepare faceplate jig for setting offset and tilt. Turn a tenon or recess on a 5" piece of hardwood and hollow out the front leaving a small rim to contact the back side of the platter.
2. Bandsaw a round blank. Mount on lathe either with friction fit against chuck jaws and tail stock or step drive and tail stock. The front side of the platter is mounted against the head stock.
3. Cut a recess for the chuck on the back side of the platter. Dome the back surface and draw concentric circles about ½" apart on the back. The domed diameter must be as wide as the faceplate jig. (Use a smaller jig if turning a small platter.) The curvature of the domed surface determines the amount of tilt of the platter. Leave the bulk of material around the rim.
4. Reverse the platter and mount the BACK SIDE in the chuck. Form a recess on the front of the platter and turn the initial rim on the front of the platter. Wrap it around to the backside. Create any accents (grooves/beads..) desired. The cut should be concave to gain depth. A convex cut is made to the material remaining on the inside. Do not remove any center material. Sand as you go for each axis of turning.
5. Remove the platter and temporarily mount the faceplate jig in the chuck. Using the tailstock for pressure only, position the platter with an offset. Experiment to get the result you want. Tilt is going to be a function of the dome shape on



the BACK side. Once you are satisfied with the jig position, mark the location of the jig on the back side of the platter. Remove platter and jig from the lathe and screw the faceplate to the platter – off center and tilted. Screws need only penetrate the platter about 3/8” as they just hold the jig in position; pressure from the tailstock creates a friction fit for turning. Remount the jig and platter on the chuck and bring up the tail stock for support. **CHECK THE SWING** to make sure everything clears as the platter will now be tilted and off center.

6. Put tape on the tool rest and mark the entry and exit points for your next cut. Typically, start at the dome and exit just short of the dome edge. Make a shallow concave cut into the dome and form a convex shape at the end of the cut on the inner material.



7. The above step can be repeated as many times as you like, moving the jig to a new position and cutting into the remaining material. Remembering that the final cut will be on the lathe axis so plan ahead on the amount of material removed.



8. Reverse the platter putting the front side into the chuck to finish the bottom. You **MUST** leave chuck recess in the back to clean up the front. Cut details in the back to disguise the recess / foot.



9. Reverse mount in the chuck and make a concave cut into the previous domed section as you did when it was off center. Finish the center area as desired – domed / flat / textured / recessed /

Thanks to Charlie for a new technique on turning an off center / tilted platter without a vacuum system. Check the club web site under the members only tab for a video and PowerPoint of the demonstration.

WTSTL Hybrid Meetings● The club purchased new speakers, a sound mixer, and microphones last month. Thanks to our new Audio / Video Coordinator, Rob Conaway for assembling the equipment and working through the software for a successful in person meeting and a Zoom meeting for remote attendance! Two additional wireless speakers have been purchased so that members in the back of the room can better hear the speaker/demonstrator. Rob is working on enabling remote members to directly communicate versus just using the chat box. **If you have experience or want to gain experience in AV,**



please contact Rob. We need to have more than one knowledgeable member to help set up, run, and be a backup operator. The assistant will also be responsible for monitoring the Zoom stream. Training and instructions are available.

In person meetings will continue to be open to visitors (except when a paid demonstrator is scheduled); remote participation will be available via Zoom.



President's Spin • Zen and the art of sawdust Having deep philosophical discussions with several fellow woodworkers and woodturners has produced several points that have the feel of an underlying truth (and yes there may have been adult beverages involved).

It seems to be that time spent in the shop has virtues beyond the occasional production of a bowl or table. While I may claim that my goal is to produce items, it seems to often be a byproduct. My time in the shop provides mental exercise, as well as physical activity, and a sense of accomplishment. The things an ideal career would have and frequently did not.

You could even look at time in the shop as a meditation session. Not just the usual internal questions of 'Why did I put that in the design?' or 'Where is my tape measure?'. But more along the lines of wondering how this important portion of your life can be improved. There is a book by Peter Korn (Director of the Center for Furniture Craftsmanship in Maine) titled 'Why we make things and why it is important'. It is a personal journey of the craftsman/artist, and far beyond my path. Although it has some interesting speculations.

In the final analysis time in the shop is challenging, satisfying, productive, and just plain fun. What more can we ask for. - **Steve Reynolds**

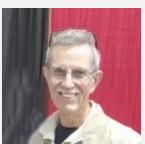
President's Challenge – September: Turn a plate / platter. Bonus points for tilting and eccentricity.



Vice President's Report • [Beads of Courage](#): Let's all remember that the Beads of Courage is a program for kids in need. BOC is a not-profit organization that is dedicated to improving the quality of life for children and teens coping with serious illness. The program integrates the use of beads as visible, tangible symbols



of their experiences and treatment. Children receive a bead for every test, procedure, or treatment they undergo. Woodturners donate boxes to hold the beads they earn. Details on requirements for the boxes can be found on the club web site. Suggestions for BOC bags can be found [here](#). Ceramic beads to attach to the boxes are \$1.25 (1 3/16" in diameter) and available from Ken. Bring your boxes (or bags) to the meeting and give them to Ken. He will be delivering them to Children's Hospital next month. – **Ken Bald**



Treasurer Report • The web site has been updated to accept electronic membership applications and payments. If you prefer to complete and mail a paper [application](#), it is available and can be down loaded from the club web site. Renewing and new members are asked to complete the new application form. A link to our



Facebook page has also been added under the sponsors list. Club patches are available from the Treasurer for \$5. – **Charles Sapp**



Secretary Report • August 22nd Hybrid Meeting:

1. Our hybrid meeting (in person and on-line) started on time with 29 members in attendance, and 7 on zoom. All officers attended the in-person meeting.
2. Steve Reynolds opened the meeting, welcomed our new members and discussed the following items:
 - a. The September meeting will be held at CJAP, picnicking in the parking lot, and a Pen Making demo inside. Members should take turns turning pens for servicemen during the picnic. We will have a pen press there so that the pens can be completed on the spot. Blanks and kits will be provided.
 - b. Show and Tell items were viewed through PowerPoint, and also by members that brought their items to the meeting. As always, the projects were amazing. It also included a Beads of Courage box made from PVC pipe with a wood turned top and bottom with a fabric covering.
3. A fantastic demo was given by Charlie Sapp – Platters – offset and tilted. Charlie's demo included information about the J.C. Campbell woodturning classes.

Linda Osterwise, Secretary

Club News:

Dues 2021 • Membership runs from Jan 1 to Dec 31. Application form is available on the club web site and may be printed and returned with payment or completed on line with electronic payment.

New Members: Please join me in welcoming our new members:

Karl Ernst from St. Louis, MO
Leah Ernst from St. Louis, MO



St. Louis County / CJAP Covid Masking Policy • Effective August 24, 2021 CJAP will require all individuals allowed in the building to show proof of COVID 19 vaccination. Face coverings (masks) will also be required to be properly worn by all individuals while attending the WTSLT meeting. We will keep you informed closer to meeting dates as to the current status. Thank you for your patience and understanding as we work through the new requirements. Remote Zoom streaming will be available. Visit our web site for the latest in health and safety guidelines.

Community Programs • Please continue to work on these items and bring them to the meeting for delivery. For more information on these programs check the web site.

- **Nursing Home Project:** This community service project for our members is to make small lidded boxes for individuals in nursing homes.



Approximate dimension should be 3X3" with loose fitting lids. Charles Sapp is collecting boxes at our meetings. The picture shows some of the boxes that have been provided by our members. A fall delivery is being planned.

- **Beads of Courage** – Our support for the Beads of Courage program continues with boxes going to Children's Hospital. Check out their [link](#) or talk to Ken Bald for more information. Ken is collecting the boxes at our meetings. Ceramic beads may be purchased at the meeting. The picture shows some of the boxes and bags that have been provided by our members and spouses.



- **Pens for the Troops** • See Treasurer, Charles Sapp, if you would like to get a pen kit to participate in the program. There is a \$3 deposit for the pen kit that is refunded when the completed pen is returned. In the interim if you want to be turning pens for this program you can use pen kits that you currently have and they will be swapped out for a Slimline pen kit when you turn in a completed pen. Completed pens will be delivered to Woodcraft prior to Veteran's Day. We currently have 29 pens turned with a goal of 50 to be donated to the program.



At the Sept 26 meeting we will have a community service gift certificate drawing. If during 2020 or 2021 you have turned a pen for the troops, turned a box for the nursing homes, or turned a beads of courage box (and returned them to the club) you can enter! Enter the drawing by emailing your name and the program that you participated in to: CWSAPP@CHARTER.NET by **Sept 23 to be entered. Pen turners at the Sept 26 meeting will also be entered.**

Positions to Fill •

- **NEWSLETTER EDITOR** – The editor is responsible for collecting articles, editing, and assembling the club newsletter.
- **AV Assistant** – Assist in the setup and operation of club AV equipment. Training is available.
- **DEMONSTRATORS** – Your help is needed to provide a demonstration at each of our meetings. The demo subject is your choice, whatever you enjoy doing – bowls, hollow forms, plates, boxes, pyrography, resins, stabilizing, tips and tricks, tops, contact Ken Bald to volunteer.

ZOOM• The club purchased a Pro Level account with Zoom so that we can host our meetings and other off-meeting events. Provided it does not conflict with any of our club events, the account can be used by members. If you would like to schedule a remote meeting send an email to webmaster@wtstl.com. Club events take priority.

Mentoring• The Board recognizes the value of hands-on and one-on-one instruction. A new page has been added to the web site (under the member's only tab so you must log on to the site) with a list of members that

offer mentoring to members. It will be one turner at a time; you must provide your project, tools, and face shield; a mask must also be worn. Make arrangements with the mentors to participate. Several of our members have taken advantage of this opportunity and provided very positive feedback on the mentors knowledge and instruction.

Amazon Smile● Thanks to those that are using Amazon Smile for their orders and selecting Woodturners of Saint Louis as their charity. We are receiving quarterly donations from the Amazon Foundation thanks to them and you. There is no added fee when you make your order and it does help the club.



Tree planting● In a win win situation members purchased a pickup truck load of cherry blanks from Matthew Molitor's shop. Members got a great bargain on banks and the proceeds of \$255 were donated to the Dept. of Conservation for tree plantings. Thank Matthew and club members!

What to do with all those cut offs● If you are like me, you throw them into a barrel and hope your neighbors need wood for their fire pit. I recently listed mine on www.NextDoor.com and a participant picked up several bags of cut offs. I told her about the creatures that are constructed at our past picnics. She sent me the following note:

*Hi Charlie, Just want you to know that the kids are having a ball with all the wood. They drag a bag over to the firepit and love pulling out all the different pieces! Then there's a discussion about what it was going to be or what it looks like now. Never thought they'd all have so much fun with these bags!
Thank you again!*

ZOOM Streaming Links NOT BEING RECEIVED ● Our meetings will be streamed via ZOOM unless noted in the meeting information on the web page. All members should receive the ZOOM link during the week prior to the meeting. If you do not receive the link by the Wednesday prior to the meeting, **send an email to CWSAPP@CHARTER.NET requesting the link by the Friday prior to the meeting.** We have had issues with email periodically being blocked by some hosts and the information not getting thru.



Shopping with Amazon Smile ● If you shop on Amazon, please consider shopping on <https://smile.amazon.com>. Just under the search bar is a link to "Supporting". Follow the links to select your favorite charity. We hope you will select Woodturners of Saint Louis. You will need to shop on the smile site for a donation to count from now on.



Calendar of Upcoming Events

Date	Pre-Meeting 11:30 am – 12:30 pm	Meeting 1:00 pm – 4:00 pm
Sept 26, 2021	Cookout in the parking lot. Meat and side dishes provided by the club; Ken Bald grilling; drinks available for purchase in machines inside CJAP or bring your own.	Pen turning demonstration followed by pen turning for the troops on the club lathes. Blanks and kits will be provided. This meeting will not be streamed via Zoom as it will be in the parking lot and hands on turning.
Oct 24, 2021	TBD	WTSTL – Hybrid meeting with Tom Zeller turning a three sided vase.

Newsletter Pictures of Show and Tell / President's Challenge Items • For better pictures and appreciation of your work, please submit pictures of your turnings to cwsapp@charter.net **by the Friday prior to the next meeting**. Include the species of wood, finish, size, and any comments. They will be included in the PowerPoint presentations that can be viewed by members at the meeting and on the remote stream.



But please, continue to bring your turning for Show and Tell and the President's Challenge to the meeting for display and judging by the members.

Video Events •

- Past demonstrations are available under the “members only” tab on the club web site.
- Turning Firewood into a Natural Edge Bowl – [click here](#)
- Kansas City Woodturning Club will host Zoom demonstration by David Ellsworth on Monday, Oct 11, 7-930pm CDT. David will demo making a medium sized hollow form. There is a \$10 fee that can be paid via PayPal:

<http://www.kcwoodturners.org/Demos/DavidEllsworth/DavidEllsworth.html>

Contact [Kevin Neelley](#) (KCWT Treasurer) for more information. The Zoom link will be emailed to paid participants about a week before the event.

Shows in the area • 50th Anniversary Midwest Artistry in Wood Show and Sale; Nov 6th and 7th, 2021 at the Belle-Clair Fairgrounds and Expo Center; 200 S Belt E at Hwy 159; Belleville, IL. For more information www.midwestwoodcarvers.com or contact Dennis McBride at dpmcabin@charter.net

SWAT – Several members from our club are attending the SWAT symposium, Aug 26-29. Jeff Hornung sent in this picture of two of our “remote members” at the symposium. Both Dan and Doug live in Texas and are members of the WTSTL. Thanks for your support of the club!



Christmas Ornament Exchange ● - Now that we are meeting in person it would be good to contact the member that won your ornament in 2020 and make arrangements for the exchange.

<u>Maker</u>	<u>Recipient</u>
Linda O	Wayne Iehl
Wayne	Steve Reynolds or McNeil
Steve McNeil	Charlie Sapp
Charlie	Rick Madden
Laura	Ken Bald
Ken	Laura Spelbring
Kathleen O	Michael Blankenship
Michael B	Steve McNeil or Reynolds
Rick M	Linda Osterwise (exchange completed)
Steve Reynolds	Kathleen Osterwise (exchange completed)



Christmas Ornament Challenge by Alan Stratton (www.aswoodturns.com)● Alan hosts an annual ornament challenge and the club submitting the most entries wins a free remote demonstration. All you need to do is:

1. Complete a Christmas or holiday ornament. Ornaments from other faiths are also welcome.
2. Take or compose one still picture featuring the ornament.
3. Enter their information and upload the picture at www.AsWoodTurns.com/challenges during the month of November. The challenge closes when November 30 closes.
4. The ornament may utilize any craft- it is not restricted to woodturning.
5. Do something good with the ornament.

More details are at www.AsWoodTurns.com/challenges or www.OrnamentChallenge.com

If you make an ornament for our club exchange, then please enter it into Alan's challenge also – we might win a free remote demonstration.

●**Facebook site** ● Check out the club Facebook page:

<https://www.facebook.com/pages/Woodturners-of-St-Louis/292734664135601> and “Like” the page (click on the “Like” icon) to receive updates. You can also post your pictures on this site.



Facebook Group ● Our club has a Facebook group that is a great way to post pictures of your work, provide tech tips, and share ideas. When you go to the site:

<https://www.facebook.com/groups/1157348070957128/?fref=nf> click on “Join” and your request will be processed by our Facebook administrator. It is a closed group and only seen by members.

August Hybrid Show and Tell



Turner: Bob Goulding

Wood: Ironwood

Finish: Deft Lacquer

Size: 7"W x 2.5" H

Comments: Dramatic wood



Turner: Linda Osterwise

Wood: Unknown

Finish: Yorkshire Grit

Size: Tall: 4.5"W x 6" H
Short: 5" W x 3" H

Comments:





Turner: Linda Osterwise

Wood: Unknown

Finish: Yorkshire Grit

Size: 4" W x 3" H

Comments: Punky wood was stabilized with Cactus Juice dyed purple and pink.



Turner: Rich Hinkebein

Wood: African Blackwood and Hard Maple

Finish: Sanding sealer with 3 coats of wipe on poly

Size: 6.5"W at top; 3.25" W at bottom

Comments: 86 pieces





Turner: Douglas Grissom

Wood: Silver Maple

Finish: Doctor's Woodshop
Bowl Finish and Wax

Size:

Comments: Fruit bowl



Turner: Douglas Grissom

Wood: Ash body with Black
Chestnut Dyed Maple finial

Finish: Deft Lacquer

Size:

Comments: Art piece





Turner: Charles Sapp
President's Challenge-
Embellished Spindle

Wood: Basswood

Finish: Spray lacquer

Size: 12" H x 2" D

Comments: Turned off center,
carved, beaded, burned,
painted, textured



Turner: Karl Ernst

Wood:

Finish: Mineral oil and bees
wax

Size:

Comments: Child's toy





Turner: Ken Bald
President's Challenge –
Embellished Spindle

Wood: Scrap from a pallet

Finish: Clear enamel

Size:

Comments: Turned on 7
centers each end



Turner: Danny Hill
President's Challenge –
Embellished Spindle

Wood:

Finish:

Size:

Comments: Texturing with
Sorby tool and coloring with
markers



Turner: Wayne Iehl
President's Challenge –
Embellished Spindle

Wood: Cherry

Finish: Walnut oil

Size:

Comments: Wedding toast
glass



Turner: Lester Krenning

Wood: Unknown burl; cap is
purple heart; finial is ebony

Finish:

Size:

Comments:





Turner: Danny Hill

Wood: Corian

Finish:

Size:

Comments: Coaster



Turner: Tom Zeller

Wood: Maple bowl with
cherry lid

Finish:

Size:

Comments: Button bowl
turned at JC Campbell with
Nick Cook





Turner: Lester Krenning

Wood: Cedar

Finish: Burned and finished
with paints and rub on color

Size:

Comments:



Turner: Lester Krenning

Wood: Spalted sycamore,
Padauk, and walnut

Finish:

Size:

Comments:





Turner: Tom Zeller

Wood: Maple

Finish:

Size:

Comments: Projects turned
at JC Campbell with Nick
Cook



Turner: Rick Madden

Wood: Various

Finish:

Size:

Comments: Beads of Courage
boxes made with fabric
covered PVC body and wood
tops and bottoms





Turner: Wayne lehl

Wood: Oak bottle; walnut
and cedar glasses

Finish:

Size:

Comments: Glasses are
stored in the "bottle".



**Show and Tell items are now featured on a
slide show on the club web site home page.**

Check it out!

www.WTSTL.com

Web site● The URL is WTSTL.com. To have access to the members only page you must log on. If you have issues or questions, contact the web master. **Items submitted for the Show and Tell are now being displayed on the home page of the web.** Provide Charlie Sapp with good quality pictures (640 x 480) of your turnings for Show and Tell!

If you enjoy turning wood, making things on your lathe or want to learn more about woodturning then join the [Woodturners of St. Louis](#). Learn and share ideas with like-minded Woodturners of St. Louis. Our chapter normally meets from 1:00pm to 4:00 pm on the fourth Sunday of every month at 8300 Valcour Avenue, St. Louis, MO.

American Association of Woodturners● WTSTL is one of 350+ worldwide chapters of the American Association of Woodturners. We encourage you to join this organization. The AAW is dedicated to providing education, information, and organization to those interested in woodturning. You can join the AAW at their site: <http://woodturner.org/member/MemberLogOn.asp>.

Membership comes with access to on-line training information and includes a subscription to the *American Woodturner* magazine. Our club is a chapter of the AAW and we encourage all club members to join the AAW. They have been publishing a great series of on-line woodturning training articles for members that are worth the price of membership by themselves. They have also indexed all of the past AAW magazine articles so you can search and find help with most any issue you have or ideas on your next project.

President:	Steve Reynolds	314.420.9781	stephen-reynolds@sbcglobal.net
Vice President:	Ken Bald	618.407.1636	KenBald@sbcglobal.net
Secretary:	Linda Osterwise	314.630.0133	osterwik@gmail.com
Treasurer:	Charles Sapp	636.928.0149	cwsapp@charter.net
Newsletter:	Charles Sapp	636.928.0149	cwsapp@charter.net
Librarian:	Rich Hinkebein	636.332.2396	kathryna1945@yahoo.com
Audio Visual:	Rob Conaway	314.378.2514	rjconaway@yahoo.com

Questions: webmaster@wtstl.com