

# WOODTURNERS OF ST. LOUIS

A Chapter of the American Association of Woodturners

WTSTL.com  
January 2022



**January Demonstration • Tom Dolan – Stone inlay** can be used to enhance your turnings and add value. Tom demonstrated a red coral inlay on a piece of hornbeam.



The process is started by turning a groove in the top of the piece that has been rough turned. A small groove is cut with the depth about equal to the width. An outer rim of wood is left to act as a dam when doing the inlay. This will later be removed to let the stone show on three sides. Since CA stains the wood, the area is flooded with a sanding sealer made from 3 parts shellac to 1 part denatured alcohol.



A 2" metal pipe with a cap and a 1" insert with a cap is used to crush the stone. A rag can be wrapped around the device to help center the plunger and to keep the dust from flying out. The stone is then sifted through a grater to separate different size particles. (Note: if using a variety of stone, clean the crusher between stones or you will contaminate one with the other). When purchasing stone make sure they are "natural, not dyed" so the color goes all the way through. Stone in the 3-5 Mohs range work well.

Powdered metals – copper, silver,...even rock salt and sea shells can be used.

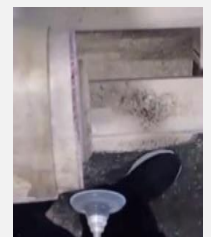


The piece is removed from the lathe leaving the chuck attached. This is very important to being successful later on in removing the wood rim - keeping the piece centered. The larger stone is placed in the groove, secured with CA (superglue) and misted with accelerator. Small tips on the CA bottle help control the flow and placement.

The next smaller grit is then applied. Tapping the side of the turning helps the smaller particles settle around the larger and reduce holes that may form. Then secured with CA and accelerator. Continue until the stone is just slightly above the surface. Flood the surface with CA in the final step.



After remounting the chuck to the lathe the outer wood rim is removed. This is where you will see the value in leaving it mounted to the chuck. Even though the groove was turned on the lathe – dismounting and mounting the chuck will still give some mis-alignment that must be removed. Depending on the Mohs hardness of your stone, a Zircon sanding disk may be required to cut and smooth the stone – both around the outside, top or any exposed edges.



Flaws / holes may show around the outer rim after the wood rim is removed. These can be filled with the small grit and CA or even just CA depending on the size of the hole.

Tom typically starts the stone sanding with a 36 grit Zircon disk and works his way through the grits to about 400. He does not usually use the micro grit pads.

The same technique can be applied to a rim on the side of a turning. However, it must be done in small sections using dams to prevent the stone from falling off while applying CA.

Clear epoxy can also be used to install the stone. Since the bottom of the groove may be seen thru the clear epoxy it is recommended that the bottom of the groove either be painted or a fine grit be applied first. It is also possible to make a see thru vessel letting the light flow through from one side to the other!

Thanks to Tom Dolan for this demonstration. A video of the demonstration will be uploaded to the club web site in the near future – check under the demonstration tab on the web site.



For more information on stone hardness and supplies:

[www.HealingCrystals.com](http://www.HealingCrystals.com)

**Mohs Hardness:** [https://www.healingcrystals.com/Mohs\\_Hardness\\_Reference\\_Chart.html](https://www.healingcrystals.com/Mohs_Hardness_Reference_Chart.html)

<https://www.nps.gov/articles/mohs-hardness-scale.htm>

**WTSTL Hybrid Meetings**● Each meeting lets us improve and address new issues with our hybrid system and those that tried to log on for the Jan meeting experienced the issues along with Rob and his team – but we learned and Rob was ardent in getting the system back up and running after a couple crashes. We had 12 on line that were able to watch the demo. The video and sound quality was greatly improved. Two new high definition cameras were used and a new Chromebook was used to control Zoom.



Try to log in about 15 minutes early to give us time to address any issues. The team is usually aware of issues since “they” are also logged into Zoom. Use the chat function to communicate with the operators.

In person meetings will continue to be open to visitors (except when a paid demonstrator is scheduled); remote participation will be available via Zoom. We are discussing the possibility of exchanging Zoom demonstrations with other clubs around the world. More to follow as details are defined.

**Website**● The website has been revised and the logon requirement has been removed. Information under the “members only” tab is available on other web pages and that tab has been removed. Personal information on the roster – address, phone, and email has been removed. The roster is still available but only a picture and associated name appears along with a note on paid/unpaid dues. Electronic membership is still available via the club website. After entering your contact information and selecting your plan you will go to PayPal to complete your application and enter the amount to pay. When PayPal asks for our organization, enter **Woodturners of St. Louis**.



**President's Spin** ● The President's challenge for February is to embellish an item.

1. Similar to what Tom Dolan demonstrated.
2. Using a knurling tool, a texturing tool or a chatter tool.
3. Using gilding paste, painting an item or staining an item. (you do not have to do all three on your piece, just embellish its appearance)

I am trying to finalize a class with Paul Krautmann as the instructor. Cost is estimated to be \$75 to \$100. The date is not finalized but hope to have it in April on Saturday or Sunday. The location of the class will be Barry Boeckstiegel's shop in Festus MO. Class length is expected to be approximately 6 hrs.

I invite each of you to fire-up your lathes and bring something for Show and Tell.

We currently have four (4) open demonstration dates July through October. If you are interested in doing a demonstration for the club, please see me or John Hoeing. If you don't feel confident doing a demonstration in front of the full club but would like to get some experience doing a demonstration; we can arrange for some time in the pre-meeting between 11:30 to 1:00pm. You could conduct a demonstration and get some feedback from other turners.

If you are in need of anchor seal, please contact me. The Show Me woodturners still have about four gallons left for purchase.

Speaking of Symposiums, there are two large symposiums scheduled for this summer: the AAW symposium in Chattanooga TN on June 24 -26 and the Southwestern Association of Turners (SWAT) in Waco TX on August 26-28, with regional and national demonstrators. Both venues are excellent to see woodturning demonstrations and learn/improve on your woodturning skills.

Many thanks to Rob Conway and team for getting the computer, sound system and Zoom online for our meetings. I know the system has many issues and Rob continues to work thru those so we can have better meetings, thanks Rob.

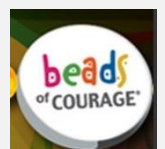
See you in February. - **Tom Zeller**

**President's Challenge** ● **Members will select their choice of winner for the PC.** During the break, review the items on the challenge table. Separate your ticket and write your selection on the back of the one marked "TICKET". Place it in the PC bowl. In addition to the winner selected by the members receiving a gift certificate, an additional door prize ticket will be given to everyone that provides a PC entry. The PC tickets are a different color and will have the winner's name written on the ticket. Look for your name on those tickets. You will not need the matching stub for the PC ticket. **One PC entry per member; must be turned in the last 90 days.**



**Vice President's Report** ● [Beads of Courage](#): The Beads of Courage is a program for kids in need. BOC is a not-profit organization dedicated to improving the quality of life for children and teens coping with serious illness. The program integrates the use of beads as visible, tangible symbols of their experiences and treatment. Children

receive a bead for every test, procedure, or treatment they undergo. Woodturners donate boxes to hold the beads they earn. Details on requirements for the boxes can be found on the club web site. Suggestions for



BOC bags can be found [here](#). Ceramic beads to attach to the boxes are \$1.25 (13/16" in diameter) and available from John. Bring your boxes (or bags) to the meeting and give them to John Hoeing. – **John Hoeing**



**Treasurer Report** • Electronic membership applications and payments can be made on the website. If you prefer to complete and mail a paper [application](#), it is available and can be down loaded from the club website. Renewing and new members are asked to complete the new application form. Club patches are available from the Treasurer for \$5. – **Charles Sapp**



**Secretary Report • Jan 23<sup>rd</sup> Meeting** Our hybrid meeting (in person and on-line) started on time with about 30 members in attendance and 12 on-line (note: Zoom connection was not established until the start of the demonstration). This was the first meeting with the new slate of officers.

Tom Zeller (newly-elected president), opened the meeting by discussing the possibilities of a class by Paul Krautmann to be held at Barry Boeckstiegel's shop located about 6 miles south of Festus, MO. Tom will provide a time, project, cost in the near term.

Tom mentioned the advantages he found with a small chuck, sold by Craft Supply, that had a one-inch grip for small wood pieces and had multiple accessories included. This chuck sells for approximately \$170.00.

Ken Bald asked a question about glue preferences for segmented projects. He indicated that he used Titebond II, and the glue was setting up too fast for his application. Several members suggested using Titebond Original, because of its slower setup time. Liquid Hyde Glue's 30-minute setup time was also mentioned as an alternative.

Tom announced that Bob Greenwood has free wood for distribution during the break to those that want/need additional wood.

A short discussion was held regarding the snowman Tom brought to the October meeting. Tom said that he started using recesses in the snowmen base as opposed to using a tenon because the recess proved to be faster as he gained more experience turning the snowmen.

John Hoeing (newly elected Vice-President) mentioned that Paul Krautmann will be doing the demo at our February meeting. Watch the website for more details.

Charles Sapp (Treasurer and Newsletter editor) informed us that Rob Conaway purchased two high definition webcams and a Chromebook to support our hybrid meetings. He also reminded us that in February, the club's insurance payment is due. Dues are due for 2022 and can be paid in person or electronically via the website. Due to hacking, our website required security changes in early January. In discussions with an internet security consultant, it was recommended that we make the following changes to the site:

- Password requirement removed allowing us to remove the Members Only tab and the need to logon.
- The roster has been modified to exclude personal information. The roster now shows only the member's picture, name, and dues paid thru date/not paid.



Linda Osterwise – (Secretary) I wish to thank everyone for sharing their Covid vaccination records with me. I've kept a list, and I'll update it each month as members and/or visitors that haven't attended since we were required to start checking them. This will be the standard until CJAP changes its requirements.

Rich Hinkebein (Librarian) reminds all of us to take advantage of our fantastic library, and return items on time. AAW book, *Tips and Tricks*, was added to the collection.

The President's Challenge for February is to embellish your project with any of the following: stone/ texture tools, paint and/or stains or gilding paste.

Show and Tell / PC entries were amazing. It was fantastic to see how many different versions of birds our group members created for the President's Challenge; John Hoeing's group setting of woodpeckers on a tree was selected by the members as the winning entry.

The demonstration was done by Tom Dolan of the Show-Me Woodturners (Festus, MO). Tom showed us several ways to embellish bowls, platters, etc. using stone as an inlay. He started at the very beginning by explaining the concept of stone hardness (Moh's hardness chart) and the tools used to crush the stone. Then he showed us how to do the inlay, what the options were, and how to complete the project. The meeting was adjourned. - **Linda Osterwise**



**Library News** • Our library is only open on Sunday at our club meetings and is open to all our paid members for checking out books, videos, and DVD's.

*Tips and Tricks* is a new addition to the library

Our library is a great source of inspiration and knowledge. We typically have around 90 items checked out by members at each meeting. Members can access a complete listing content on the club website. Please take advantage of this wonderful club benefit and return items in a timely manner. The large meeting space allows me to spread out the material so you can review and check it out. Please let me know if you have any suggestions to improve our library. All of the magazines have been moved into storage, due to space limitations, with the exception of American Woodturner. Magazines are available upon request. – **Rich Hinkebein**

**Overdue Library Material** – Our library is suffering from the impacts of COVID. Members are requested to return material after a month or contact the librarian. Many of our items have been out for several months. If you are one of the guilty parties, please email Rich Hinkebein and let him know that you still have the items and make arrangements for return. Thanks.



## **Club News:**

**Dues 2022** • Dues are due for 2022. Application form is available on the club website and may be printed and returned with payment or completed on line with electronic payment.



**St. Louis County / CJAP Covid Masking Policy** • Effective August 24, 2021 CJAP requires all individuals allowed in the building to show proof of COVID 19 vaccination. Face coverings (masks) are also required to be properly worn by all individuals while attending the WTSTL meeting. Remote Zoom streaming will be available. Visit our web site for the latest in health and safety guidelines. We will provide an update as needed closer to each meeting.

**Community Programs** • Please continue to work on these items and bring them to the meeting. For more information on these programs check the club web site.

#### **Nursing Home Turnings, Beads of Courage, Pens for the Troops**

(note- nursing home turnings can range from boxes, to small bowls, bird houses, feather creatures, ....)

**Group Bandsaw Purchase**• WTSTL member, Stephen Massman, has volunteered to do a group bandsaw purchase of Timberwolf bandsaw blades. Each person can pick what TPI, size, and quantities they want. Bandsaw tires are also available for a group buy. The discount depends on how large an order we can make.



See <https://www.timberwolfblades.com/Woodworking-Clubs.php> for the discount breakdowns. We expect to be in the 25% discount range and may coordinate with other clubs. The items would be shipped to Steve and distribution made at a club meeting. Click the following link to identify the blades that are available: <https://timberwolfblades.com/Blade-Selector.php>. Contact Steve at [massmans@gmail.com](mailto:massmans@gmail.com) if you are interested, have any questions or want more information.

The order will be placed following the Feb 27 meeting.

#### **Positions to Fill** •

- NEWSLETTER EDITOR – The editor is responsible for collecting articles, editing, and assembling the club newsletter.
- DEMONSTRATORS – Your help is needed to provide a demonstration at each of our meetings. The demo subject is your choice, whatever you enjoy doing – bowls, hollow forms, plates, boxes, pyrography, resins, stabilizing, tips and tricks, tops, ..... contact John Hoeing to volunteer.

**Zoom**• The club purchased a Pro Level account with Zoom so that we can host our meetings and other off-meeting events. Provided it does not conflict with any of our club events, the account can be used by members. If you would like to schedule a remote meeting send an email to [webmaster@wtstl.com](mailto:webmaster@wtstl.com). Club events take priority.

**Mentoring**• The Board recognizes the value of hands-on and one-on-one instruction. Check the website for information on the mentoring program. It will be one turner at a time; you must provide your project, tools, and face shield; a mask must also be worn. Make arrangements with the mentors to participate. Several of our members have taken advantage of this opportunity and provided very positive feedback on the mentors knowledge and instruction.

**ZOOM Streaming Links NOT BEING RECEIVED** • Our meetings will be streamed via ZOOM unless noted in the meeting information on the web page. We may even go live for the Pre Meeting for more interaction. All members should receive the ZOOM link during the week prior to the meeting. If you do not receive the link by the Wednesday prior to the meeting, send an email to [CWSAPP@CHARTER.NET](mailto:CWSAPP@CHARTER.NET) requesting the link.



## Calendar of Upcoming Events

Date	Pre-Meeting 11:30 am – 12:30 pm	Meeting 1:00 pm – 4:00 pm
Feb 2022	TBD	Paul Krautmann – Tool control and turning reproduction spindles
March 2022	TBD	Open – contact John Hoeing to volunteer
April 2022	TBD	Michael Blankenship demonstrates turning a copper lidded bowl.
May 2022	TBD	Steve McNeil and Michael Blankenship demonstrate segmented turning.
June 2022	TBD	Jeff Hornung – Basket weave platter

**Newsletter Pictures of Show and Tell / President's Challenge Items** • For better pictures and appreciation of your work, please submit pictures of your turnings to [cwsapp@charter.net](mailto:cwsapp@charter.net) by the Friday prior to the next meeting. Include the species of wood, finish, size, and any comments. They will be included in the PowerPoint presentations that can be viewed by members at the meeting and on the remote stream.



*But please, continue to bring your turning for Show and Tell and the President's Challenge to the meeting for display and judging by the members.*

**Shopping with Amazon Smile** • Thanks to those that are using Amazon Smile for their orders and selecting Woodturners of Saint Louis as their charity. We are receiving quarterly donations from the Amazon Foundation thanks to them and you. There is no added fee when you make your order and it does help the club.



When you shop on Amazon, please consider shopping on <https://smile.amazon.com>. Just under the search bar is a link to "Supporting". Follow the links to select your favorite charity. We hope you will select **Woodturners of Saint Louis**. You will need to shop on the **smile site** for a donation to count.

## Video Events ●

- Past demonstrations are available on the club website.
- Texturing: <https://www.youtube.com/watch?v=4KDgVQyhd8I>
- Creating finials: <https://www.youtube.com/watch?v=Nme0jFFIKyE>
- Texturing: <https://www.youtube.com/watch?v=lORDc7MTW5M>
- Segmented bowls: [https://www.rockler.com/learn/woodturning-segmented-bowls?sid=wwjwkly&utm\\_source=constantcontact&utm\\_medium=email&utm\\_campaign=wwjwkly](https://www.rockler.com/learn/woodturning-segmented-bowls?sid=wwjwkly&utm_source=constantcontact&utm_medium=email&utm_campaign=wwjwkly)

## Facebook site ● Check out the club Facebook page:

<https://www.facebook.com/pages/Woodturners-of-St-Louis/292734664135601> and “Like” the page (click on the “Like” icon) to receive updates. You can also post your pictures on this site.

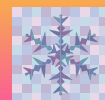


**Facebook Group ●** Our club has a Facebook group that is a great way to post pictures of your work, provide tech tips, and share ideas. When you go to the site: <https://www.facebook.com/groups/1157348070957128/?fref=nf> click on “Join” and your request will be processed by our Facebook administrator. It is a closed group and only seen by members.





# January Hybrid Show and Tell



Turner: Bob Goulding

Wood: Old olive stump

Size: 6" x 4"

Finish: Deft spray lacquer

Comments: Wood sat out in the desert for a long time; lots of cracks and checks; dramatic grain; cracks filled with 5 minute epoxy and India ink; note hole in side/bottom



Turner: Bob Goulding



Wood: Old olive stump

Size: 9" x 4"

Finish: Deft spray lacquer

Comments: Wood sat out in the desert for a long time; lots of cracks and checks; dramatic grain; cracks filled with 5 minute epoxy and India ink





Turner: Wayne lehl

Wood: Maple, walnut, apple

Size: 10" x 8"

Finish: Lacquer

Comments: Bird in nest with eggs



Turner: Wayne lehl

Wood: Ash

Size: 10" x 6"

Finish: Lacquer

Comments: One piece with multi-axis turning; with stand





Turner: Wayne Iehl

Wood: Box elder

Size: 11"x5"; 9"x4"; 7"x2";  
4"x1.5"

Finish: Walnut oil

Comments: Cored from  
same piece of wood



Turner: Ed Smith

Wood: Variety

Size:

Finish:

Comments: Pens, seam  
rippers, and bottle stoppers





Turner: Rich Hinkebein

Wood: Variety

Size:

Finish:

Comments: Family reunion



Turner: Rich Hinkebein

Wood: Unknown

Size:

Finish:

Comments: Pieces from the  
scrap pile







Turner: Lester Krenning



Turner: Lester Krenning







Turner: Lester Krenning



Turner: Lester Krenning





Turner: Charles Sapp

Wood: Cedar

Size: ~6"

Finish: Spray poly



Turner: Karl Ernst





Turner: Leah Ernst



Turner: Tom Brock

Wood: Walnut

Size:

Finish:

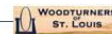


Turner: John Hoeing

Wood: Variety

Size: ~12" tall

Finish:



Turner: Steve Reynolds





Turner: Jerry Rymarquis

Stone Inlays



**Show and Tell items are now featured on a  
slide show on the club website home page.**

**Check it out!**

**[www.WTSTL.com](http://www.WTSTL.com)**

**Web site●** The URL is WTSTL.com. To have access to the members only page you must log on. If you have issues or questions, contact the web master. **Items submitted for the Show and Tell are now being displayed on the home page of the web.** Provide Charlie Sapp with good quality pictures (640 x 480) of your turnings for Show and Tell!

If you enjoy turning wood, making things on your lathe or want to learn more about woodturning then join the [Woodturners of St. Louis](http://www.WTSTL.com). Learn and share ideas with like-minded Woodturners of St. Louis. Our chapter normally meets from 1:00pm to 4:00 pm on the fourth Sunday of every month at 8300 Valcour Avenue, St. Louis, MO.



**American Association of Woodturners•** WTSTL is one of 350+ worldwide chapters of the American Association of Woodturners. We encourage you to join this organization. The AAW is dedicated to providing education, information, and organization to those interested in woodturning. You can join the AAW at their site: <http://woodturner.org/member/MemberLogOn.asp>.

Membership comes with access to on-line training information and includes a subscription to the *American Woodturner* magazine. Our club is a chapter of the AAW and we encourage all club members to join the AAW. They have been publishing a great series of on-line woodturning training articles for members that are worth the price of membership by themselves. They have also indexed all of the past AAW magazine articles so you can search and find help with most any issue you have or ideas on your next project.

President:	Tom Zeller	314.484.6499	<a href="mailto:tzeller0520@charter.net">tzeller0520@charter.net</a>
Vice President:	John Hoeing	314.550.8540	<a href="mailto:jghoeing@mac.com">jghoeing@mac.com</a>
Secretary:	Linda Osterwise	314.630.0133	<a href="mailto:osterwik@gmail.com">osterwik@gmail.com</a>
Treasurer:	Charles Sapp	636.928.0149	<a href="mailto:cwsapp@charter.net">cwsapp@charter.net</a>
Newsletter:	Charles Sapp	636.928.0149	<a href="mailto:cwsapp@charter.net">cwsapp@charter.net</a>
Librarian:	Rich Hinkebein	636.332.2396	<a href="mailto:kathryna1945@yahoo.com">kathryna1945@yahoo.com</a>
Audio Visual:	Rob Conaway	314.378.2514	<a href="mailto:rjconaway@yahoo.com">rjconaway@yahoo.com</a>

Questions: [webmaster@wtstl.com](mailto:webmaster@wtstl.com)