

# WOODTURNERS OF ST. LOUIS

A Chapter of the American Association of Woodturners

WTSTL.com  
March 2025

Meetings are now on THE 4<sup>th</sup> TUESDAY OF THE MONTH IN THE EVENING. Premeeting starts at 5pm and main meeting starts at 6:30PM. Meetings continue to be hosted at CTF at 8300 Valcour Ave; Affton, MO. Next meeting will be April 22, 2025.



**Rob Conaway – Wig stand** • Rob started with a 2" x 6" blank for the bottom; a 2" x 5" for the top; and a 1.5" x 1.5" x 12" for the spindle. After marking circles on the top and bottom blanks he used a Forstner bit to drill a 1 1/8" hole in the center (whatever fits your small chuck) and band sawed them into circles.



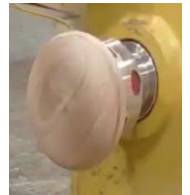
An expansion grip was used in the bottom hole and a larger recess cut for reverse mounting of the bottom. After reverse mounting, the bottom was shaped.



The top was then mounted using an expansion grip in the small hole and the top shaped.



The spindle was mounted between centers and shaped.



The project was then assembled and ready for finishing. Polyurethane is recommended. Articles on the project are listed below for more information and ideas.

Documentation / Links for Wig Stands

<https://www.woodturner.org/common/Uploaded%20files/WIT/Liaison/Wigstand%20Collated%20articles.pdf>

[https://www.turnersanonymous.org/content.aspx?page\\_id=22&club\\_id=945935&module\\_id=679156](https://www.turnersanonymous.org/content.aspx?page_id=22&club_id=945935&module_id=679156)

<https://wgo.ca/Documents/Projects/WigStand.pdf>



<http://www.lancasterareawoodturners.org/wp-content/uploads/2022/02/Wig-Stand-Directions.pdf>

## YouTube

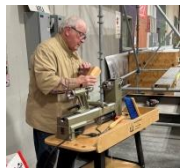
Richard Raffan - <https://www.youtube.com/watch?v=OdU1Lp2hjWg>

Mike Peace - <https://www.youtube.com/watch?v=L8ZKvJvxwY>

Thanks to Rob for a great demonstration on our new community program, wig stands. A video of the demonstration will be available on the WTSTL YouTube channel.



**Pre-Meeting**● Tom Zeller turned mushrooms and discussed chucks designed to hold small items. Thanks Tom.



**Mentoring**● The Board recognizes the value of hands-on and one-on-one instruction. **Check the website for information on the mentoring program.** It will be one turner at a time; you must provide your project, tools, and face shield; a mask must also be worn. Make arrangements with the mentors to participate. Several of our members have taken advantage of this opportunity and provided very positive feedback on the mentor's knowledge and instruction.

**WTSTL Tool Boxes and Turning Tools**● Each of our Comet lathes has a number and there is a tool box with tools with the same number in the movable/lockable cabinets. When setting up the pre-meeting area get the numbered box that goes with that Comet. This helps us identify any missing items and which box to replenish.

It is also very important to put the tools from a specific box back into that same box for inventory control. And, be sure that the tool boxes are taken back to the meeting room and stored in the locked mobile cabinets. The chuck and all loose items (spurs, knock out bar, ...) should be removed from the lathe and put back in the tool box for secure storage.

**WTSTL Hybrid Meetings**● Each meeting lets us improve and address new issues with our hybrid system. In person meetings will continue to be open to visitors (except when a paid demonstrator is scheduled); remote participation will be available via Zoom.

**Website**● Electronic membership to the WTSTL is available via the club website. After entering your contact information and selecting your plan, [log on to your PayPal account](#) to complete your application and enter the amount to pay. When PayPal asks for our

organization, enter **Woodturners of St. Louis**. You will receive a follow up email with your membership card. If you are not contacted within a couple of weeks, email the club Treasurer.

## Welcome to New Member

Craig Altman of Creve Coeur, MO



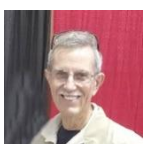
**President's Spin** ● Hello and welcome to spring. We have had some great weather, followed by typical Midwest Spring weather. Thank you, Tom, for showing us how to make a turned mushroom. I appreciate everyone for bearing with me and my demo. Wig stands are the newest community support item. We all know someone who has been impacted by cancer. Please join me in making one for donation and President's challenge in April.

One of our newest members, Moe Milstead, has volunteered to be the Librarian. Please welcome and thank him for joining the team. I would also like to ask people to volunteer a little time each month for our club. We all appreciate the work it takes to put on the monthly meetings and maintain the club. Today, a few of us are shouldering most of the time to keep the club moving in a positive direction. It takes a few hours per month to help make the club better. We need a club newsletter editor to round out the team supporting the club. Please take a moment to think about assisting. Thank you all who assist today and for your consideration in helping tomorrow. Until next month, keep turning! - **Rob Conaway**

**President's Challenge** ● Members select their choice of winner for the PC. During the break, review the items on the challenge table. Separate your ticket and write your selection (the number in front of each entry) on the back of the one marked "TICKET". Place it in the PC bowl. Your voting ticket will enter you in the door prize drawing. One PC entry per member; must be turned following the challenge.

**Congratulations to the March PC winner:** Art Stadler for his French rolling pin.

**President's Challenge for April 2025** – Turn a wig stand for donation to the community program.



**Treasurer Report** ● **Dues are due for 2025 membership.** Electronic membership applications and payments can be made on the website. If you prefer to complete and mail a [paper application](#), it is available and can be down loaded from the club website. Renewing and new members are asked to complete the new application form. Club patches are available from the Treasurer for \$5. – **Charles Sapp**





**Secretary Report January:** We had 24 members in attendance; 1 visitor; and 3 people attending via Zoom.

Pre-meeting demo was turning mushrooms by Tom Zeller.

Meeting demo was turning wig stands by Rob Conaway. We will be collecting the wig stands to be donated to a local hospital later in the year.

The pre-meeting demo is scheduled for 5:00 pm. We could use some extra help in setting up the tables, chairs and equipment. The doors are usually open by 4:30. - **Valerie Botkin**



**Library News** • Thanks to member, Moe Milstead, for stepping forward to manage our library. The library is only open on Tuesday evening at our club meetings and is open to all our paid members for checking out books, videos, and DVD's.

Our library is a great source of inspiration and knowledge. Members can access a complete listing content on the club website. Please take advantage of this wonderful club benefit and return items in a timely manner.

Thanks to Rich Hinkebein for serving as our librarian for many years and growing it to be one of the best resources in the area. – **Moe Milstead**

## Community Programs •



**Beads of Courage:** The Beads of Courage is a program for kids in need. BOC is a not-profit organization dedicated to improving the quality of life for children and teens coping with serious illness. The program integrates the use of beads as visible, tangible symbols of their experiences and treatment. Children receive a bead for every test, procedure, or treatment they undergo. Woodturners donate boxes to hold the beads they earn. Details on requirements for the boxes can be found on the club web site. Suggestions for BOC bags can be found [here](#). Ceramic beads to attach to the boxes are \$1.25 (13/16" in diameter) and available from Rob. Bring your boxes (or bags) to the meeting and give them to Tom Reel.

**Pens for the Troops** – Kits are available from the club Treasurer for a \$3 deposit which is returned to you when a completed pen is returned for the program – get your kits and return completed pens to Charles Sapp. Our goal for 2025 is 275 pens.



**Wig Stands** – This is a new project for the club. Wig stands will be collected and delivered to a hospital in the fall. A video is available on our YouTube channel and article links included in this newsletter.



## Video Resources ●

- The Woodturners of St. Louis have a YouTube channel. On it you will find many of our demonstrations. To find the videos – go to YouTube.com and search on *Woodturner St Louis*. <https://www.youtube.com/@woodturnersstlouis2950/videos>

Note – Not a member of the AAW. They have a guest membership that provides FREE sixty day access to AAW resources and full online access to all published content. Check out their website: [AAW Guest Member](#).

**Work Station Design ●** Joe Farrell designed and built this work station for quick access to his turning tools and storage for chucks and other supplies. Contact Joe if you would like design information to make your own.



## Positions to Fill ●

- Newsletter Editor – The editor is responsible for collecting articles, editing, and assembling the club newsletter.
- Demonstrators– Your help is needed to provide a demonstration at each of our meetings. The demo subject is your choice, whatever you enjoy doing – bowls, hollow forms, plates, boxes, pyrography, resins, stabilizing, tips and tricks, tops, ..... Contact Tom Zeller to volunteer.
- Audio / Visual Team – Additional support is needed to help set up, monitor and understand the system for backup. Additional support would really help. Talk to Steve Botkin to volunteer.
- Pre-Meeting Mentor – Set up the Comets and be available to mentor members and visitors
- We appreciate all the help with set up and clean up. Contact Rob Conaway for more opportunities.

**Tax Deductions●** The Woodturners of St. Louis is a 501 (c)(3) charitable organization. Donations may be tax deductible. Donate up to \$100,000 annually from your IRA directly to a qualified charity through a [qualified charitable distribution](#). (As long as certain rules are met-such as you're at least 70½ when making the gift, and the check is payable directly to the qualified charity-then the distribution shouldn't be taxable income.)

**Contributions accepted at any time of the year!**



**ZOOM Streaming Links** • Our meetings will be streamed via ZOOM unless noted in the meeting information on the web page. All members should receive a reminder and the ZOOM link during the week prior to the meeting. If you do not receive the link by the Thursday prior to the meeting, send an email to [CWSAPP@CHARTER.NET](mailto:CWSAPP@CHARTER.NET) requesting the link.

**Vendor / Sponsor Discounts** • Check the website for vendors that offer discounts to club members. When shopping at Rockler in Bridgeton, ask them to register your purchase with the WTSTL as they provide gift cards to the club for door prizes after a number of purchases.



## Calendar of Upcoming Events

Date	Pre-Meeting 5:00 pm – 6:00 pm	Meeting 6:30 pm – 8:30 pm
April 22, 2025		Ken Bald – Turning a Wave Bowl
May 27, 2025	TBD	TBD

**Facebook site** • Check out the club Facebook page:

<https://www.facebook.com/pages/Woodturners-of-St-Louis/292734664135601>

and “Like” the page (click on the “Like” icon) to receive updates. You can also post your pictures on this site.



**Facebook Group** • Our club has a Facebook group that is a great way to post pictures of your work, provide tech tips, and share ideas. When you go to the site:

<https://www.facebook.com/groups/1157348070957128/?fref=nf> click on “Join” and your request will be processed by our Facebook administrator. It is a closed group and only seen by members.

# March Show and Tell

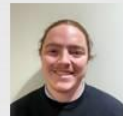


Charles Sapp

French Chef rolling pin



12 inch figured and spalted maple

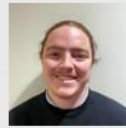


Alex Radetic





River Birch Burl



Alex Radetic



Ken Bald





Ken Bald



Ken Bald



Art Staden

Winner March President's Challenge



Moe Milstead





Tom Zeller



Our URL is [WTSTL.com](http://WTSTL.com). If you have issues or questions, contact the web master. **Items submitted for the Show and Tell are now being displayed on the home page of the web.**

If you enjoy turning wood, making things on your lathe or want to learn more about woodturning then join the [Woodturners of St. Louis](http://Woodturners of St. Louis). Learn and share ideas with like-minded Woodturners of St. Louis. Our chapter normally meets from 6:30 pm to 8:30 pm on the fourth Tuesday of every month at 8300 Valcour Avenue, St. Louis, MO with a pre-meeting at 5:00 pm.

**American Association of Woodturners** • WTSTL is one of 350+ worldwide chapters of the American Association of Woodturners. We encourage you to join this organization. The AAW is dedicated to providing education, information, and organization to those interested in woodturning. You can join the AAW at their site: <http://woodturner.org/member/MemberLogOn.asp>.

Membership comes with access to on-line training information and includes a subscription to the *American Woodturner* magazine. Our club is a chapter of the AAW and we encourage all club members to join the AAW. They have been publishing a great series of on-line woodturning training articles for members that are worth the price of membership by themselves. They have also indexed all of the past AAW magazine articles so you can search and find help with most any issue you have or ideas on your next project.

President:	Rob Conaway	314.378.2514	<a href="mailto:riconaway@yahoo.com">riconaway@yahoo.com</a>
Vice President:	Tom Zeller	314.484.6499	<a href="mailto:zellertom83@gmail.com">zellertom83@gmail.com</a>
Secretary:	Valerie Botkin		<a href="mailto:valeriebotkin@gmail.com">valeriebotkin@gmail.com</a>
Treasurer:	Charles Sapp	636.928.0149	<a href="mailto:cwsapp@charter.net">cwsapp@charter.net</a>
Newsletter:	Charles Sapp	636.928.0149	<a href="mailto:cwsapp@charter.net">cwsapp@charter.net</a>
Librarian:	Moe Milstead	501.286.5923	<a href="mailto:moe_milstead@msn.com">moe_milstead@msn.com</a>
Audio Visual:	Steve Botkin	314.504.0684	<a href="mailto:Steve@Botkin.ws">Steve@Botkin.ws</a>

Questions: [webmaster@wtstl.com](mailto:webmaster@wtstl.com)

**Show and Tell items are featured on a slide show on the club website home page. Check it out!**

**[www.WTSTL.com](http://www.WTSTL.com)**